

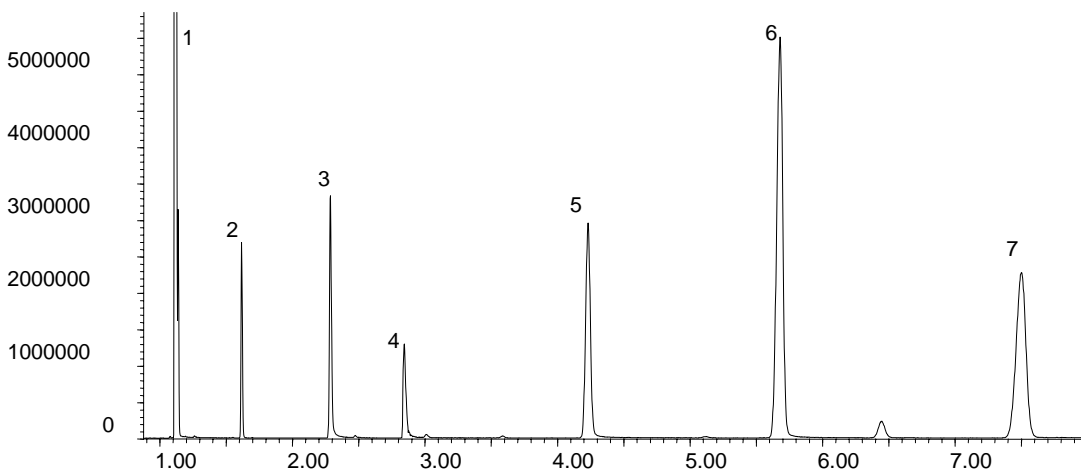
SOL 23 SOLVENTS

Capillary Column Test Mix on SolGel-1ms™

Phase: SolGel-1ms, 0.25µm film
Sample: 1000ppm in Pentane
Column: 30m x 0.25 mm ID
 Isothermal Temp: 145°C, 9 min.
 Detector Type: Mass Spectrometer
 Carrier Gas: He, 34.5 psi
 Carrier Gas Flow: 1.6 mL/min.
 Constant Flow: On
 Average Linear Velocity: 35 cm/sec at 50°C
 Injection Mode: Splitless
 Purge on Time: 0.5 min.
 Purge on (Split) Vent Flow: 60mL/min.
 Injection Volume: 1 µL
 Injection Temperature: 250°C
 Autosampler: No
 Liner Type: 4 mm ID Double Taper Liner
Liner Part Number: 092017
Column Part Number: 054795
 ms-NoVent™ Part no.: 113400
 HP5973 restrictor: 113409
 Full Scan / SIM: Full scan 45-450

Table 1. Kovats Index comparison of SolGel-1 with BP1 and a competitors 100% Dimethyl Polysiloxane.

No.	Component	Kovats Index		
		SolGel-1	BP1	Competitors 100%Dimethyl Polysiloxane
1	Pentane			
2	Decane	1000	1000	1000
3	4-Chlorophenol	1165	1167	1164
4	Decylamine	1240	1241	1239
5	Undecanol	1357	1358	1356
6	Acenaphthylene	1433	1434	1434
7	Pentadecane	1500	1500	1500



visit www.sge.com or contact our technical Customer Support Team on: techsupport@sge.com

SGE International Pty. Ltd.
email: support@sge.com

SGE Incorporated (USA)
email: usa@sge.com

SGE (France) Sarl
email: france@sge.com

SGE Deutschland GmbH
email: germany@sge.com

SGE Japan Inc.
email: sgejpn@itjit.ne.jp

SGE Australia Pty. Ltd.
email: sales@sge.com

SGE Europe Ltd. (UK)
email: uk@sge.com

SGE (Italia) Srl.
email: sge.italia@tin.it

SGE China Service Centre
email: sge@bj.col.com.cn

SGE India
email: sgeindia@bom4.vsnl.net.in