

## SOL 21 SOLVENTS

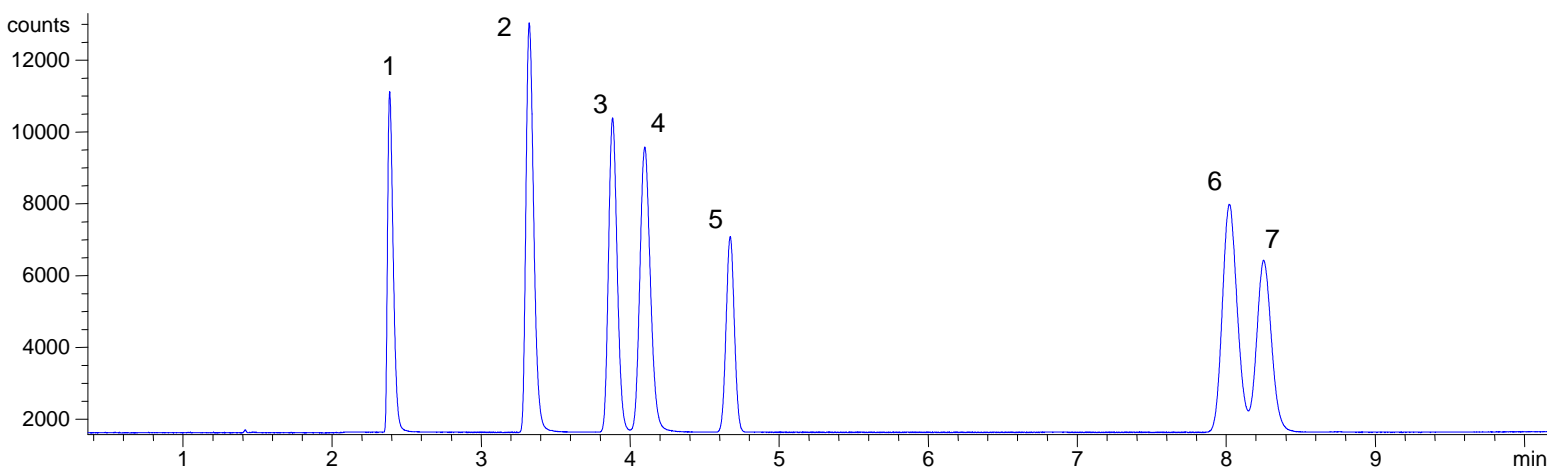
## Analysis of a Common Solvent Mixture on BP624

### Conditions

**Phase:** BP624, 1.8 $\mu$ m film  
**Alcohol mix:** 1000ppm in Dimethyl Sulfoxide  
**Column:** 30m x 0.32 mm ID  
**Initial Temp:** 32°C, 9 min.  
**Rate:** 30°C/min to 190°C  
**Final Temp:** 190°C, 0 min.  
**Detector Type:** FID  
**Carrier Gas:** He, 9.6psi  
**Carrier Gas Flow:** 2.2 mL/min.  
**Constant Flow:** On  
**Average Linear Velocity:** 34 cm/sec at 32°C  
**Injection Mode:** Split  
**Split Ratio:** 100:1  
**Injection Volume:** 0.2  $\mu$ L  
**Injection Temperature:** 250°C  
**Autosampler:** No  
**Liner Type:** 4 mm ID Double Taper Liner  
**Liner Part Number:** 092018  
**Column Part Number:** 054832

### Components

1. Methanol
2. Ethanol
3. Acetone
4. Isopropyl alcohol
5. Dichloromethane
6. 2-Butanone
7. Ethyl acetate



visit [www.sge.com](http://www.sge.com) or contact our technical Customer Support Team on: [techsupport@sge.com](mailto:techsupport@sge.com)

SGE International Pty. Ltd.  
email: [support@sge.com](mailto:support@sge.com)

SGE Incorporated (USA)  
email: [usa@sge.com](mailto:usa@sge.com)

SGE (France) Sarl  
email: [france@sge.com](mailto:france@sge.com)

SGE Deutschland GmbH  
email: [germany@sge.com](mailto:germany@sge.com)

SGE Japan Inc.  
email: [sgejpn@itjit.ne.jp](mailto:sgejpn@itjit.ne.jp)

SGE Australia Pty. Ltd.  
email: [sales@sge.com](mailto:sales@sge.com)

SGE Europe Ltd. (UK)  
email: [uk@sge.com](mailto:uk@sge.com)

SGE (Italia) Srl.  
email: [sge.italia@tin.it](mailto:sge.italia@tin.it)

SGE China Service Centre  
email: [sge@bj.col.com.cn](mailto:sge@bj.col.com.cn)

SGE India  
email: [sgeindia@bom4.vsnl.net.in](mailto:sgeindia@bom4.vsnl.net.in)