

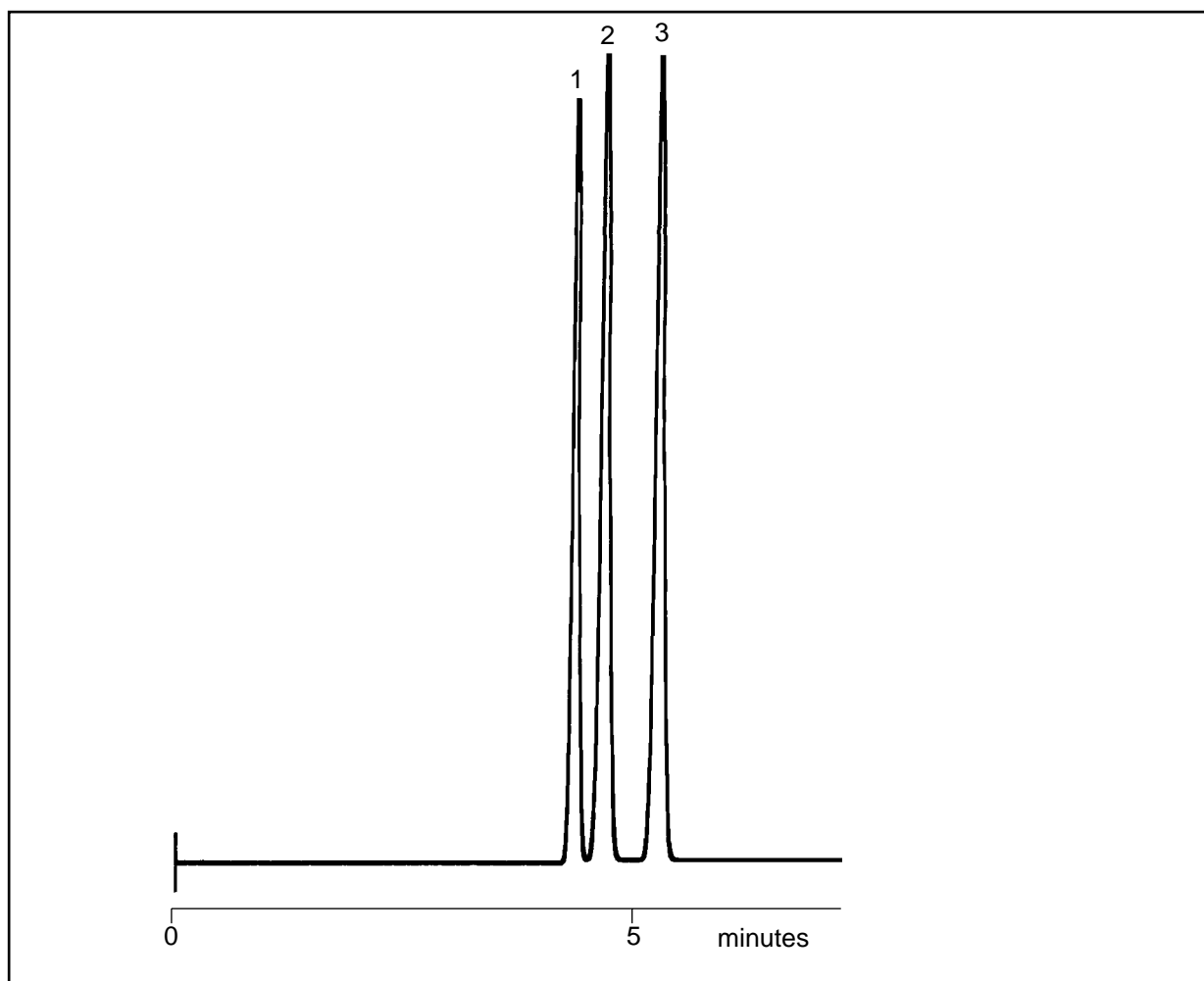
## SOL 19 SOLVENTS

## Petroleum Hydrocarbons on a Thick Film 0.53mm ID BP1

Part No.: 054095  
Phase: BP1, 5.0 $\mu$ m  
Column: 25m x 0.53mm ID  
Initial Temp.: 40°C isothermal  
Detector: FID, 320°C  
Injector Mode: Split, 100:1, 200°C  
Carrier Gas: Helium, 8mL/min  
Injection Volume: 0.1 $\mu$ L

### Components

1. Benzene
2. Cyclohexene
3. Cyclohexane



visit [www.sge.com](http://www.sge.com) or contact our technical Customer Support Team on: [techsupport@sge.com](mailto:techsupport@sge.com)

SGE International Pty. Ltd.  
email: [support@sge.com](mailto:support@sge.com)

SGE Incorporated (USA)  
email: [usa@sge.com](mailto:usa@sge.com)

SGE (France) Sarl  
email: [france@sge.com](mailto:france@sge.com)

SGE Deutschland GmbH  
email: [germany@sge.com](mailto:germany@sge.com)

SGE Japan Inc.  
email: [sgejpn@itjit.ne.jp](mailto:sgejpn@itjit.ne.jp)

SGE Australia Pty. Ltd.  
email: [sales@sge.com](mailto:sales@sge.com)

SGE Europe Ltd. (UK)  
email: [uk@sge.com](mailto:uk@sge.com)

SGE (Italia) Srl.  
email: [sge.italia@tin.it](mailto:sge.italia@tin.it)

SGE China Service Centre  
email: [sge@bj.col.com.cn](mailto:sge@bj.col.com.cn)

SGE India  
email: [sgeindia@bom4.vsnl.net.in](mailto:sgeindia@bom4.vsnl.net.in)