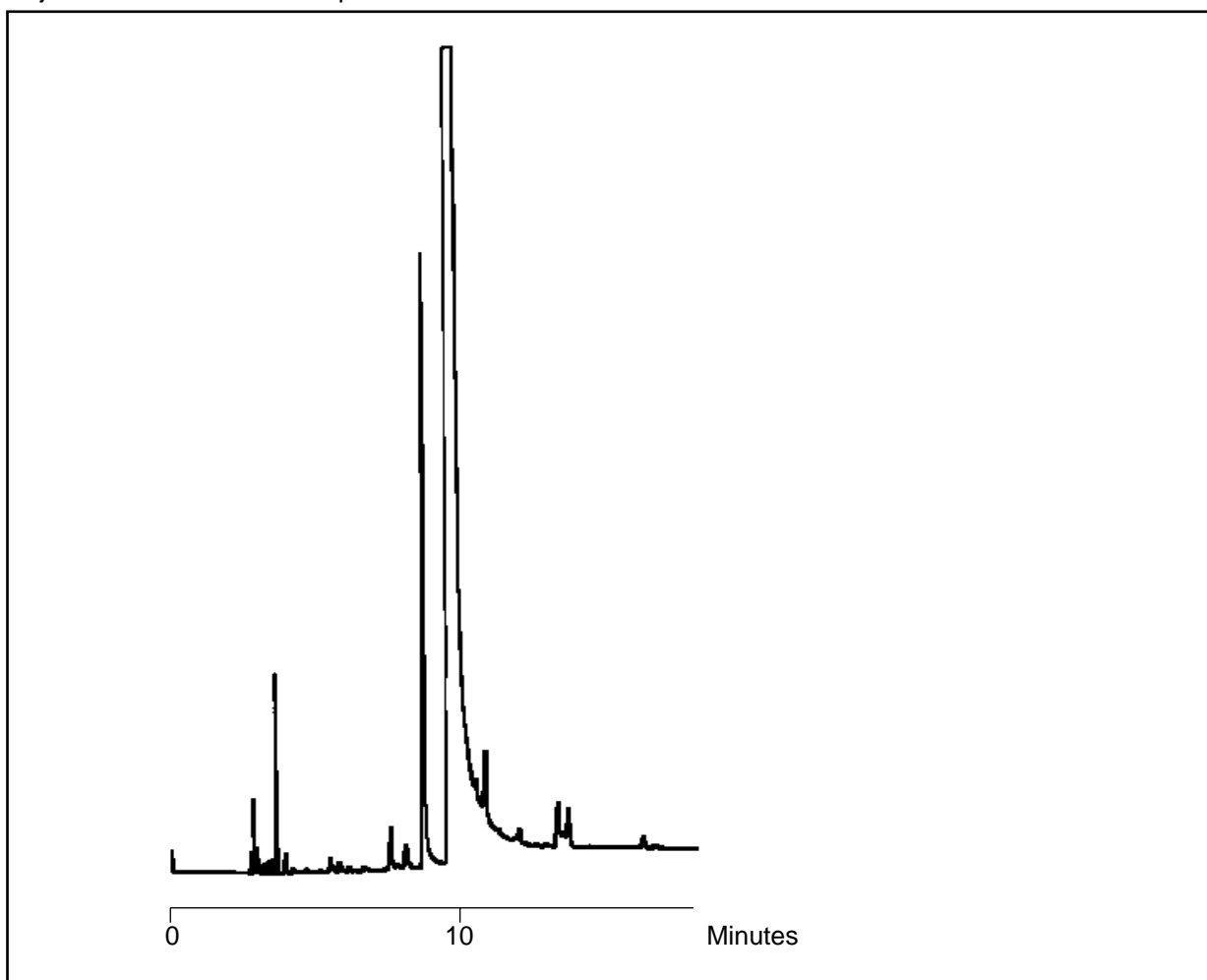


SOL 18 SOLVENTS

Analysis of Diethylamino Ethoxyethanol on BP20

Part No.: 054448
Phase: BP20, 1.0 micron
Column: 25m x 0.53mm ID
Initial Temp.: 150°C, 1min
Rate: 10°C/min
Final Temp.: 180°C, 1min
Detector: FID, 280°C
Injector Mode: Split, 50:1, 240°C
Carrier Gas: Helium, 15kpa
Injection Volume: 0.1µL



visit www.sge.com or contact our technical Customer Support Team on: techsupport@sge.com

SGE International Pty. Ltd.
email: support@sge.com

SGE Incorporated (USA)
email: usa@sge.com

SGE (France) Sarl
email: france@sge.com

SGE Deutschland GmbH
email: germany@sge.com

SGE Japan Inc.
email: sgejpn@itjit.ne.jp

SGE Australia Pty. Ltd.
email: sales@sge.com

SGE Europe Ltd. (UK)
email: uk@sge.com

SGE (Italia) Srl.
email: sge.italia@tin.it

SGE China Service Centre
email: sge@bj.col.com.cn

SGE India
email: sgeindia@bom4.vsnl.net.in