

Ethylene Glycol and Diethylene Glycol Analysis on BP21

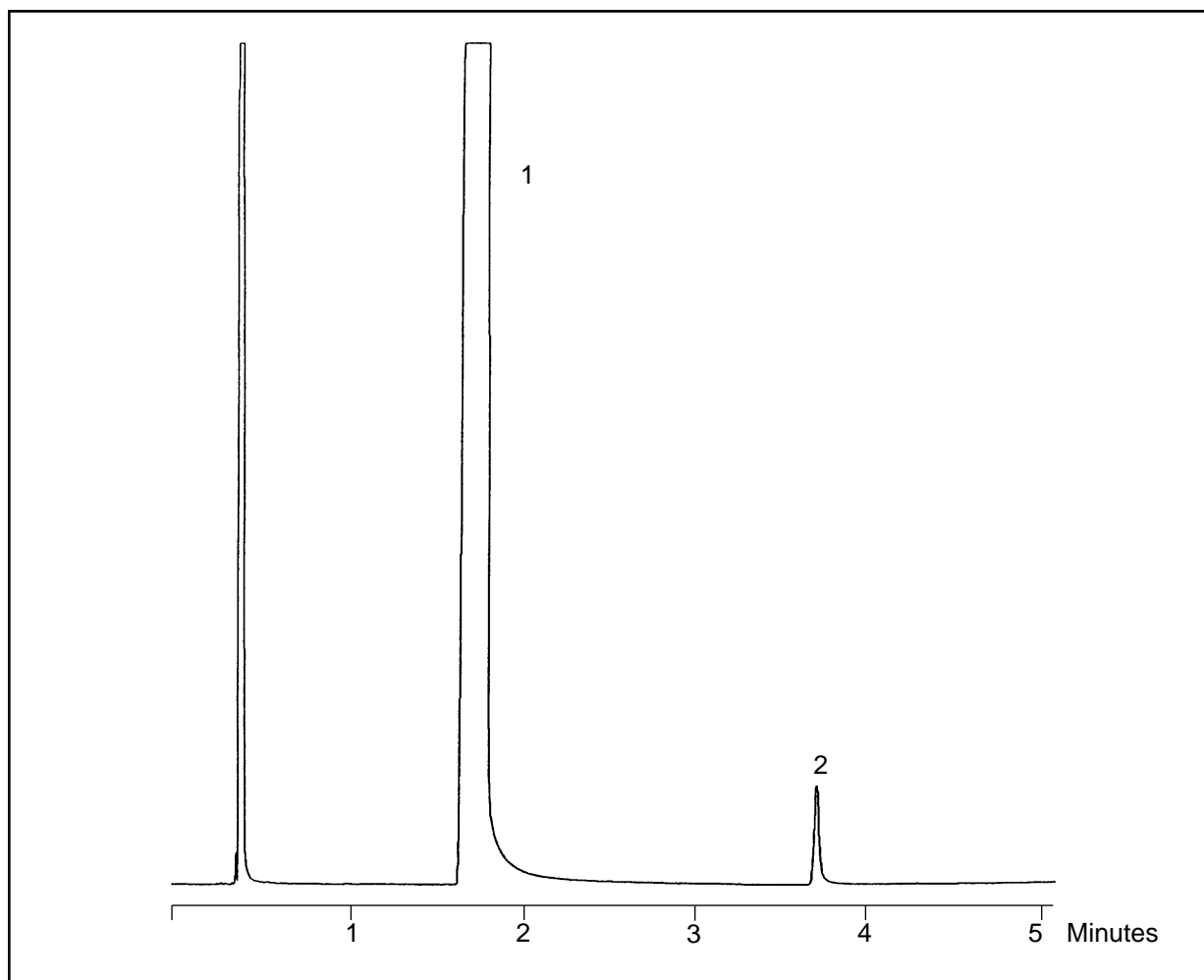
KEYWORDS:

Glycols

Part No.: 054473
Phase: BP21, 0.5 μ m
Column: 12m x 0.53mm ID
Initial Temp.: 110°C, 0.5min
Rate: 15°C/min
Final Temp.: 170°C
Detector: FID, 270°C
Injector Mode: Split 20:1
Carrier Gas: Helium, 2psi
Injection Volume: 0.4 μ l
Injection Temp: 240°C

Components

1. Ethylene glycol
2. Diethylene glycol



visit www.sge.com or contact our technical Customer Support Team on: techsupport@sge.com

SGE International Pty. Ltd.
email: support@sge.com

SGE Incorporated (USA)
email: usa@sge.com

SGE (France) Sarl
email: france@sge.com

SGE Deutschland GmbH
email: germany@sge.com

SGE Japan Inc.
email: sgejpn@itjit.ne.jp

SGE Australia Pty. Ltd.
email: sales@sge.com

SGE Europe Ltd. (UK)
email: uk@sge.com

SGE (Italia) Srl.
email: sge.italia@tin.it

SGE China Service Centre
email: sge@bj.col.com.cn

SGE India
email: sgeindia@bom4.vsnl.net.in