

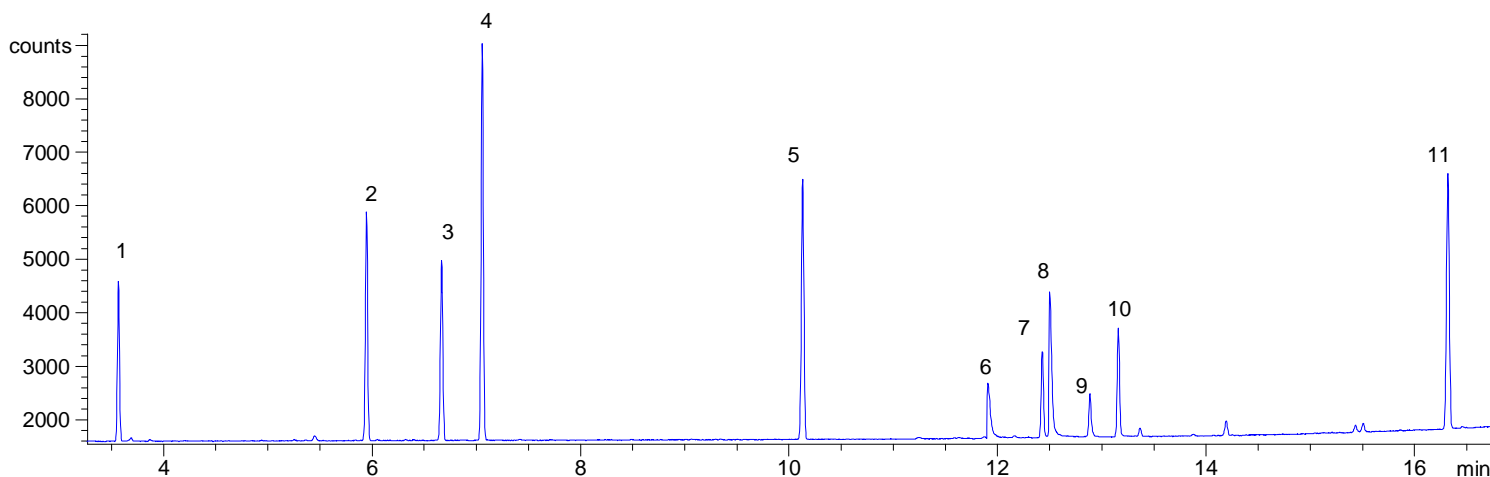
## POL 06 POLYMERS

## Analysis of Various Monomers on SolGel-Wax™

**Phase:** SolGel-Wax, 0.25µm film  
**Sample:** 250ppm in Hexane  
**Column:** 30m x 0.25 mm ID  
Initial Temp: 40°C, 1 min.  
Rate 1: 10°C/min to 250°C,  
Final Temp: 250°C,  
Detector Type: FID  
Detector Temp.: 320°C  
Carrier Gas: He, 16.6 psi  
Carrier Gas Flow: 1.6 mL/min.  
Constant Flow: On  
Average Linear Velocity: 35 cm/sec at 40°C  
Injection Mode: Split  
Split Ratio: 80:1  
Injection Volume: 1 µL  
Injection Temperature: 250°C  
Autosampler: No  
Liner Type: 4 mm ID Single Taper Liner  
**Liner Part Number:** 092017  
**Column Part Number:** 054796

### Components

- 1 Ethyl acrylate
- 2 *n*-Butyl acrylate
- 3 *n*-Butyl methacrylate
- 4 Styrene
- 5 2-Ethylhexyl acrylate
- 6 Acrylic acid
- 7 Hydroxypropyl acrylate
- 8 Methacrylic acid
- 9 Unknown
- 10 Hydroxyethyl acrylate
- 11 Lauryl Methacrylate



visit [www.sge.com](http://www.sge.com) or contact our technical Customer Support Team on: [techsupport@sge.com](mailto:techsupport@sge.com)

SGE International Pty. Ltd.  
email: support@sge.com

SGE Incorporated (USA)  
email: usa@sge.com

SGE (France) Sarl  
email: france@sge.com

SGE Deutschland GmbH  
email: germany@sge.com

SGE Japan Inc.  
email: sgejpn@itjit.ne.jp

SGE Australia Pty. Ltd.  
email: sales@sge.com

SGE Europe Ltd. (UK)  
email: uk@sge.com

SGE (Italia) Srl.  
email: sge.italia@tin.it

SGE China Service Centre  
email: sge@bj.col.com.cn

SGE India  
email: sgeindia@bom4.vsnl.net.in