

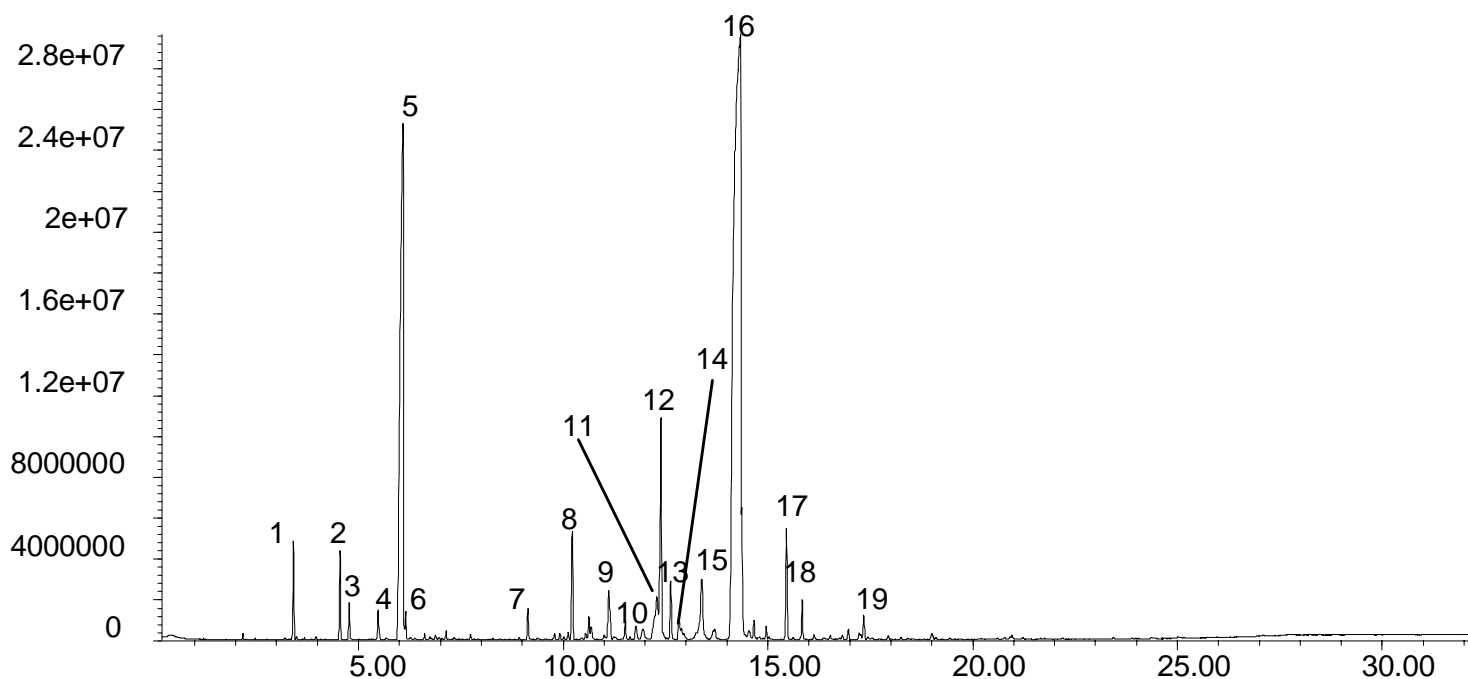
FLA/FRA 21
Flavours/Fragrances

Analysis of Spearmint Oil on SolGel-WAX™

Phase: SolGel-WAX™, 0.25µm film
Sample: neat
Column: 30m x 0.25 mm ID
Initial Temp: 40°C, 1 min.
Rate 1: 8°C/min to 220°C,
Final Temp: 220°C, 5 min.
Detector Type: Mass Spectrometer
Carrier Gas: He, 25.7 psi
Carrier Gas Flow: 1.8 mL/min.
Constant Flow: On
Average Linear Velocity: 35 cm/sec at 40°C
Injection Mode: Split
Split Ratio: 100:1
Injection Volume: 0.2 µL
Injection Temperature: 250°C
Autosampler: No
Liner Type: 4 mm ID Single Taper Liner
Liner Part Number: 092017
Column Part Number: 054796
 ms-NoVent™ Part no.: 113400
 HP5973 restrictor: 113409
Full Scan / SIM: Full scan 45-450

Components

1. α-Pinene
2. β-Pinene
3. Sabinene
4. Myrcene
5. Limonene
6. 1,8-Cineole
7. 3-Octanol
8. Menthone
9. β-bourbonene
10. Linalool L
11. *trans* Caryophyllene
12. *cis* dihydrocarvone
13. *Trans* dihydrocarvone
14. *I* Menthol
15. Dihydrocarvyl acetate
16. L-Carvone
17. *trans* Carveol
18. *cis* Carveol
19. Caryophyllene oxide



visit www.sge.com or contact our technical Customer Support Team on: techsupport@sge.com

SGE International Pty. Ltd.
 email:support@sge.com

SGE Incorporated (USA)
 email:usa@sge.com

SGE (France) Sarl
 email:france@sge.com

SGE Deutschland GmbH
 email:germany@sge.com

SGE Japan Inc.
 email:sgejpn@itjit.ne.jp

SGE Australia Pty. Ltd.
 email:sales@sge.com

SGE Europe Ltd. (UK)
 email:uk@sge.com

SGE (Italia) Srl.
 email:sge.italia@tin.it

SGE China Service Centre
 email:sge@bj.col.com.cn

SGE India
 email:sgeindia@bom4.vsnl.net.in