

## FRA/FLA 15

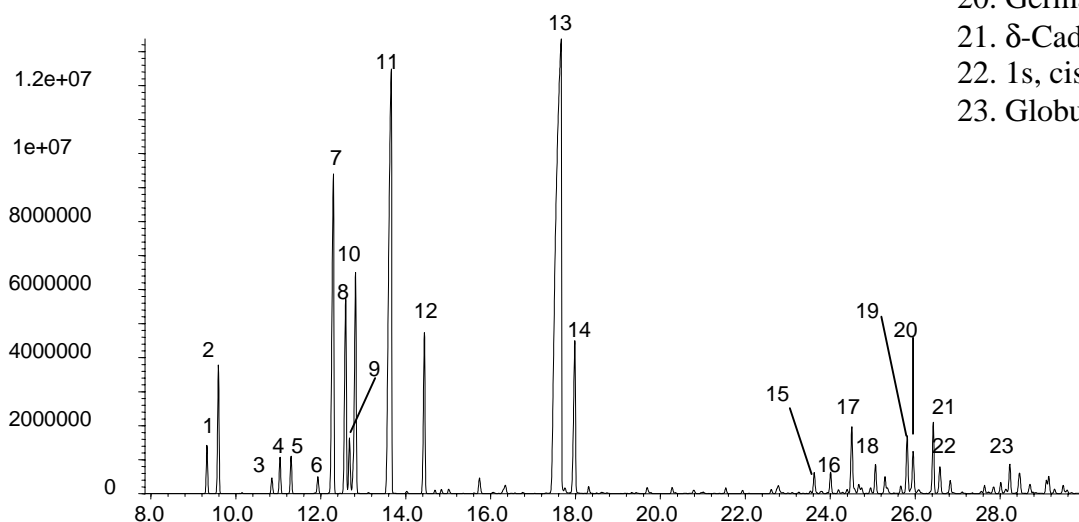
### FLAVOURS/FRAGRANCES

## Analysis of Teatree Oil on BPX5

**Phase:** BPX5, 0.25µm film  
**Lavender oil :** Lavender Oil in ethanol  
**Column:** 30m x 0.25 mm ID  
**Initial Temp:** 40°C, 1 min.  
**Rate 1:** 5°C/min to 200°C,  
**Final Temp:** 200°C  
**Detector Type:** Mass Spectrometer  
**Carrier Gas:** He, 7.0 psi  
**Carrier Gas Flow:** 1.0 mL/min.  
**Constant Flow:** On  
**Average Linear Velocity:** 36 cm/sec at 40°C  
**Injection Mode:** Split  
**Split Ratio:** 200:1  
**Purge on (Split) Vent Flow:** 200mL/min.  
**Injection Volume:** 0.2 µL  
**Injection Temperature:** 250°C  
**Autosampler:** No  
**Liner Type:** 4 mm ID Double Taper Liner  
**Liner Part Number:** 092018  
**Column Part Number:** 054101

### Components

1. Thujene
2. α-Pinene
3. Sabinene
4. 3-Octanol
5. -Pinene
6. α-Phellandrene
7. α-Terpinene
8. p-Cymene
9. Limonene
10. 1,8-Cineole
11. -Terpinene
12. Terpinolene
13. Terpinen-4-ol
14. α-Terpineol
15. α-Gurjunene
16. (trans)-β-Caryophyllene
17. Aromadendrene
18. Alloaromadendrene
19. Ledene
20. Germacrene B
21. δ-Cadinene
22. 1s, cis-Calamenene
23. Globulol



visit [www.sge.com](http://www.sge.com) or contact our technical Customer Support Team on: [techsupport@sge.com](mailto:techsupport@sge.com)

SGE International Pty. Ltd.  
email:support@sge.com

SGE Incorporated (USA)  
email:usa@sge.com

SGE (France) Sarl  
email:france@sge.com

SGE Deutschland GmbH  
email:germany@sge.com

SGE Japan Inc.  
email:sgejpn@itjit.ne.jp

SGE Australia Pty. Ltd.  
email:sales@sge.com

SGE Europe Ltd. (UK)  
email:uk@sge.com

SGE (Italia) Srl.  
email:sge.italia@tin.it

SGE China Service Centre  
email:sge@bj.col.com.cn

SGE India  
email:sgeindia@bom4.vsnl.net.in