

FRA/FLA 05
FLAVOURS/FRAGRANCES

Analysis of Menthol Oil on CYDEX-B

KEYWORDS:

Menthol Oil

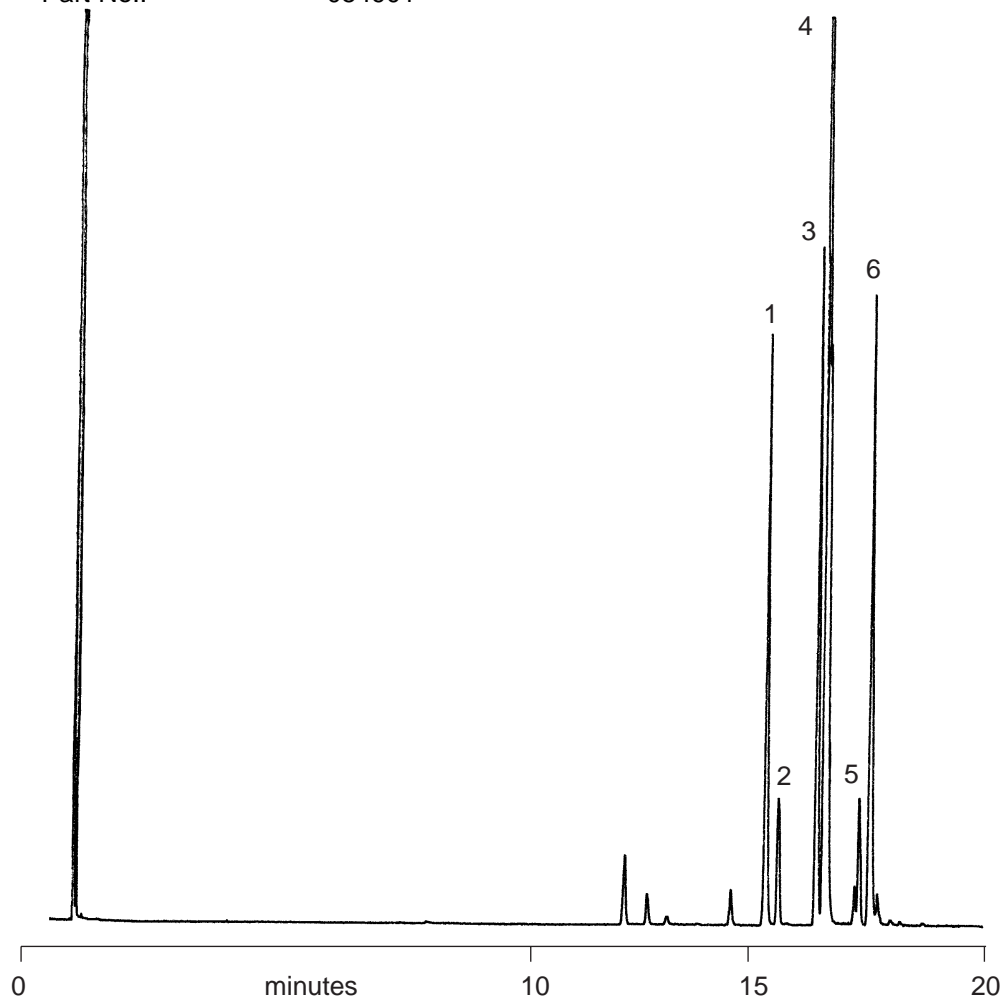
MENTHOL OIL

Phase: Cydex-B, 0.25µm film
Column: 50m x 0.22mm I.D.
Initial Temp.: 100°C, 5min
Rate: 2°C/min
Final Temp.: 130°C
Carrier Gas: H₂
Detector: F.I.D.
Sensitivity: 32 x 10⁻¹² AFS
Injection Mode: Split
Part No.: 054901

Notes: Cydex - B column enables the separation of three different enantiomer pairs in Menthol Oil.

Components

1. (+) Neomenthol
2. (-) Neomenthol
3. (+) Menthol
4. (-) Menthol
5. (+) α-Terpineol
6. (-) α-Terpineol



visit www.sge.com or contact our technical Customer Support Team on: techsupport@sge.com

SGE International Pty. Ltd.
email: support@sge.com

SGE Incorporated (USA)
email: usa@sge.com

SGE (France) Sarl
email: france@sge.com

SGE Deutschland GmbH
email: germany@sge.com

SGE Japan Inc.
email: sgejpn@itjit.ne.jp

SGE Australia Pty. Ltd.
email: sales@sge.com

SGE Europe Ltd. (UK)
email: uk@sge.com

SGE (Italia) Srl.
email: sge.italia@tin.it

SGE China Service Centre
email: sge@bj.col.com.cn

SGE India
email: sgeindia@bom4.vsnl.net.in