

## FAM 26

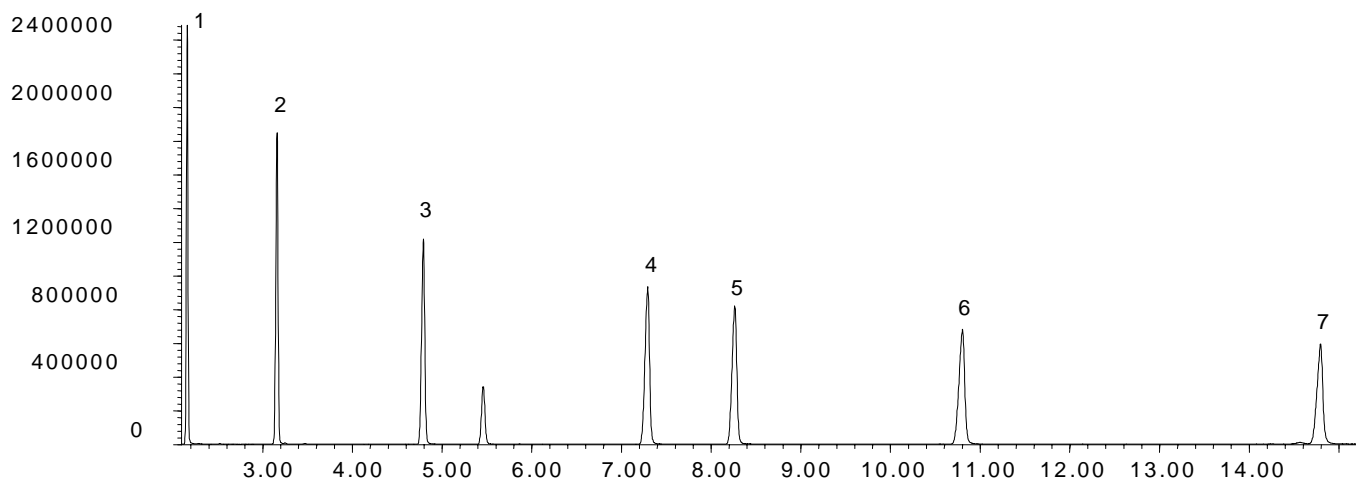
### FATTY ACID METHYL ESTERS

## C13-C23 FAME Standard on BPX70

**Phase:** BPX70, 0.25 $\mu$ m film  
**Sample:** 200ppm in dichloromethane  
**Column:** 25m x 0.22 mm ID  
**Initial Temp:** 155°C,  
**Rate 1:** 2°C/min to 180°C,  
**Rate 2:** 4°C/min to 220°C  
**Final Temp:** 220°C, 5 min.  
**Detector Type:** MSD  
**Carrier Gas:** He, 35.3psi  
**Carrier Gas Flow:** 1.6 mL/min.  
**Constant Flow:** On  
**Average Linear Velocity:** 35 cm/sec at 155°C  
**Injection Mode:** Split  
**Split Ratio:** 80:1  
**Injection Volume:** 0.5  $\mu$ L  
**Injection Temperature:** 250°C  
**Autosampler:** No  
**Liner Type:** 4 mm ID Double Taper Liner  
**Liner Part Number:** 092018  
**Column Part Number:** 054602  
**ms-NoVent™ Part no.:** 113400  
**HP5973 restrictor:** 113409  
**Full Scan / SIM:** Full scan 45-450

### Components

1. Methyl 12-tridecenoate (C13:1)
2. Methyl 10-pentadecenoate (C15:1)
3. Methyl 10-heptadecenoate (C17:1)
4. Methyl 10-nonadecenoate (C19:1)
5. Methyl 10-13 nonadecadienoate (C19:2)
6. Methyl 12-heneicosenoate (C21:1)
7. Methyl 14-tricosenoate (C23:1)



visit [www.sge.com](http://www.sge.com) or contact our technical Customer Support Team on: [techsupport@sge.com](mailto:techsupport@sge.com)

SGE International Pty. Ltd.  
email: [support@sge.com](mailto:support@sge.com)

SGE Australia Pty. Ltd.  
email: [sales@sge.com](mailto:sales@sge.com)

SGE Incorporated (USA)  
email: [usa@sge.com](mailto:usa@sge.com)

SGE Europe Ltd. (UK)  
email: [uk@sge.com](mailto:uk@sge.com)

SGE (France) Sarl  
email: [france@sge.com](mailto:france@sge.com)

SGE (Italia) Srl.  
email: [sge.italia@tin.it](mailto:sge.italia@tin.it)

SGE Deutschland GmbH  
email: [germany@sge.com](mailto:germany@sge.com)

SGE China Service Centre  
email: [sge@bj.col.com.cn](mailto:sge@bj.col.com.cn)

SGE Japan Inc.  
email: [sgejpn@ijit.ne.jp](mailto:sgejpn@ijit.ne.jp)

SGE India  
email: [sgeindia@bom4.vsnl.net.in](mailto:sgeindia@bom4.vsnl.net.in)