

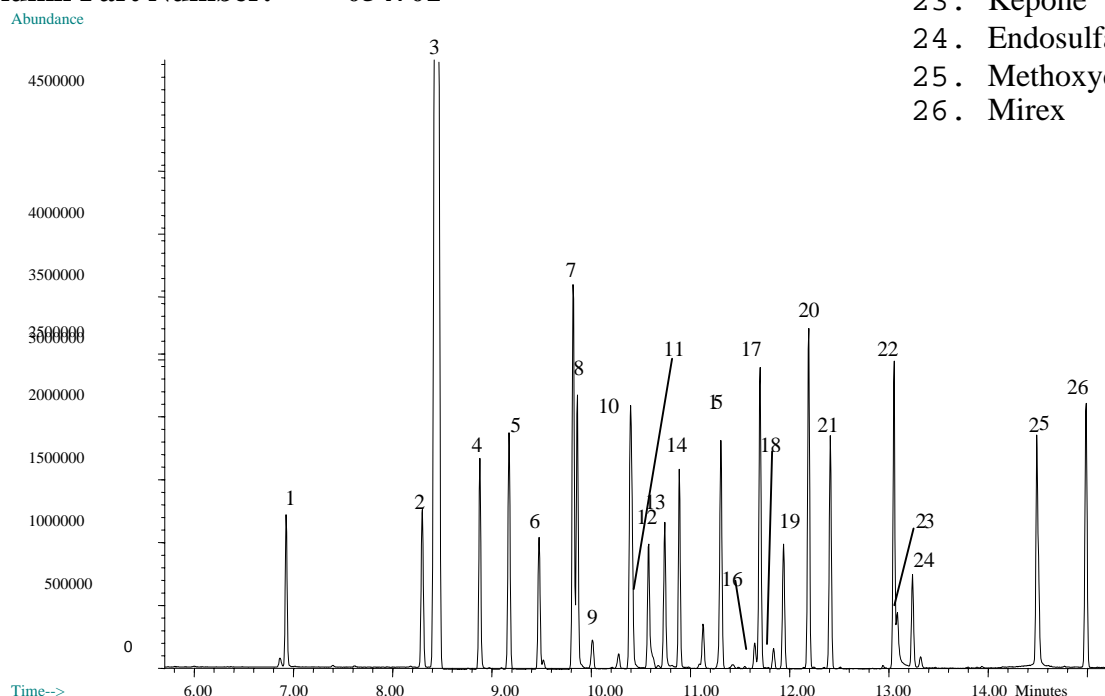
ENV 56
ENVIRONMENTAL

Organochlorine Pesticide Mix on BPX35

COMPONENTS

1. Trifluralin
2. HCB
3. -BHC
4. Atrazine
5. γ -BHC
6. β -BHC
7. Heptachlor
8. Alachlor
9. δ -BHC
10. Aldrin
11. Metribuzin
12. Malathion
13. Carbaryl
14. Phosphorothioic acid
15. Heptachlorepoxy
16. cis-Chlordane
17. trans-Nonachlor
18. trans-Chlordane
19. Endosulfan A
20. pp'-DDE
21. Dieldrin
22. pp'-DDD
23. Kepone
24. Endosulfan B
25. Methoxychlor
26. Mirex

Phase: BPX35 0.25 μ m film
8081 Standard: 10 ng/ μ L in dichloromethane
Column: 30m x 0.25 mm ID
Initial Temp: 40°C, 1 min.
Rate 1: 30°C to 190°C, 3 min.
Rate 2: 10°C to 300°C
Final Temp: 300°C, 5 min.
Detector Type: MSD
Carrier Gas: He, 10.0psi
Carrier Gas Flow: 1.3 mL/min.
Constant Flow: On
Average Linear Velocity: 36 cm/sec at 40°C
Injection Mode: Splitless
Purge on Time: 1 min.
Purge on (Split) Vent Flow: 60mL/min.
Injection Volume: 1 μ L
Injection Temperature: 250°C
Autosampler: No
Liner Type: 4 mm ID Double Taper Liner
Liner Part Number: 092018
Column Part Number: 054701



visit www.sge.com or contact our technical Customer Support Team on: techsupport@sge.com

SGE International Pty. Ltd.
email:support@sge.com

SGE Incorporated (USA)
email:usa@sge.com

SGE (France) Sarl
email:france@sge.com

SGE Deutschland GmbH
email:germany@sge.com

SGE Japan Inc.
email:sgejpn@itjit.ne.jp

SGE Australia Pty. Ltd.
email:sales@sge.com

SGE Europe Ltd. (UK)
email:uk@sge.com

SGE (Italia) Srl.
email:sge.italia@tin.it

SGE China Service Centre
email:sge@bj.col.com.cn

SGE India
email:sgeindia@bom4.vsnl.net.in