

ENV 51
ENVIRONMENTAL

Total Recoverable Petroleum Hydrocarbons (TRPH) C8-C40 on SolGel-1ms™

Sample Description: TRPH mix 500mg/L, 4ng per component on column.

Sample Introduction:

Split / Splitless
Injector Temp: 250°C
Injection Volume: 0.5µL
Autosampler Syringe: 5µL Fixed Needle Part No. 001810
Septa: Auto-Sep T™ Part No. 041882

Injection Type: Split
Purge On Time: NA
Purge On (Split) Vent: 100mL/min
Split Ratio: 62.5 to 1
Liner Type: Double taper Part No. 092018

Pressure/Flow Values:

Carrier Gas: Helium
Constant Flow: On
Pressure: 16.6psi
Column Flow: 1.6mL/min
Linear Velocity: 35cm/sec @ 40°C

Oven Parameters:

Initial Temp: 40°C
Initial Time: 2min
Rate 1: 30°C/min
Final Temp. 1: 310°C
Hold Time: 0min
Rate 2: 10°C/min
Final Temp. 2: 340°C
Hold Time: 0min
Run Time: 22.00min

SolGel-1 ms™ column

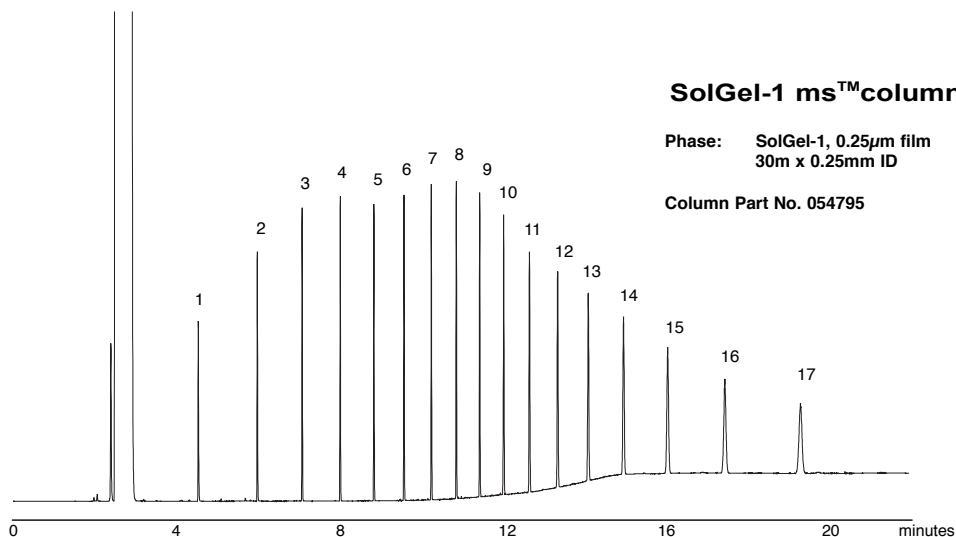
Phase: SolGel-1, 0.25µm film
30m x 0.25mm ID

Column Part No. 054795

Detector Parameters:

Detector Type FID @ 340°C

1. C8	10. C26
2. C10	11. C28
3. C12	12. C30
4. C14	13. C32
5. C16	14. C34
6. C18	15. C36
7. C20	16. C38
8. C22	17. C40
9. C24	



visit www.sge.com or contact our technical Customer Support Team on: techsupport@sge.com

SGE International Pty. Ltd.
email: support@sge.com

SGE Incorporated (USA)
email: usa@sge.com

SGE (France) Sarl
email: france@sge.com

SGE Deutschland GmbH
email: germany@sge.com

SGE Japan Inc.
email: sgejpn@itjit.ne.jp

SGE Australia Pty. Ltd.
email: sales@sge.com

SGE Europe Ltd. (UK)
email: uk@sge.com

SGE (Italia) Srl.
email: sge.italia@tin.it

SGE China Service Centre
email: sge@bj.col.com.cn

SGE India
email: sgeindia@bom4.vsnl.net.in