

## USEPA Method 608.1 - Organochlorine Pesticides on BPX5

**KEYWORDS:**

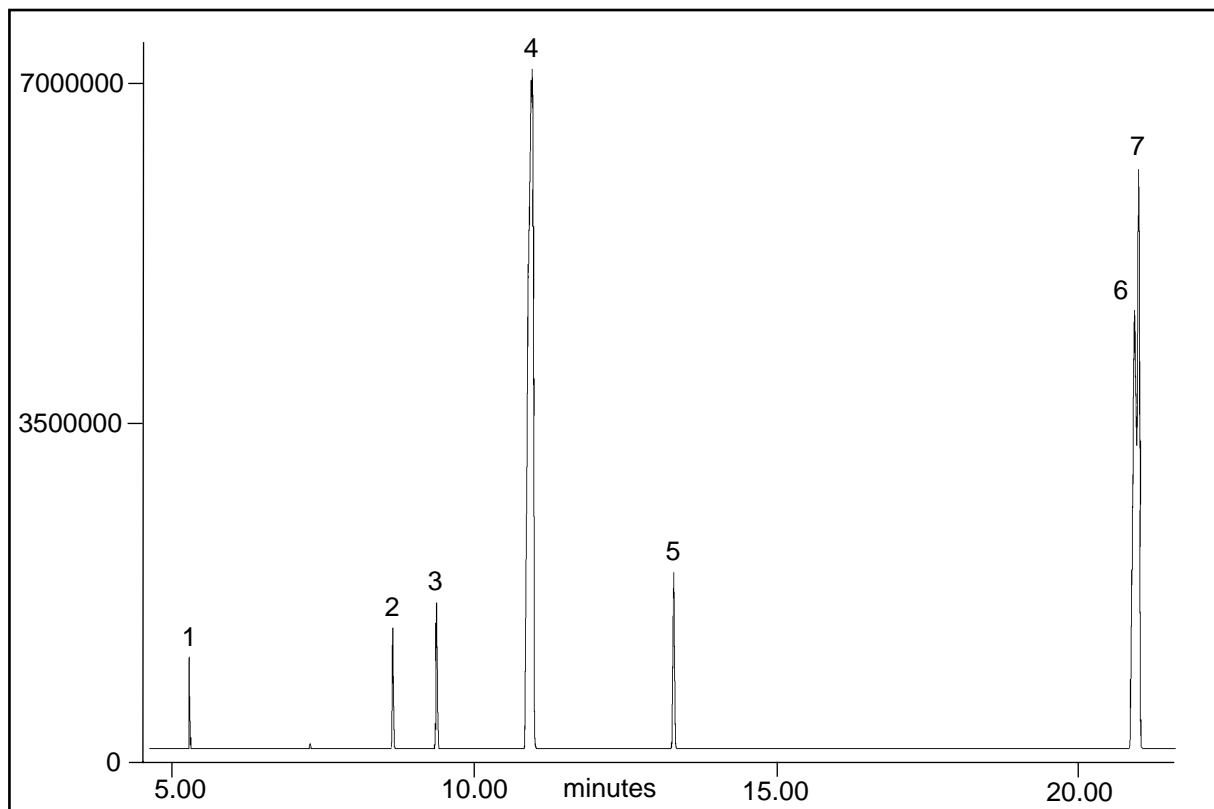
EPA Method 608.1  
Chlorinated Pesticides  
OCP  
GC/MS

**USEPA Method 608.1 - Organochlorine Pesticides**

**Components**

Part No.: 054142  
Phase: BPX5, 0.25µm  
Column: 30m x 0.22mm ID  
Initial Temp.: 50°C, 1min  
Rate 1: 30°C/min  
Temp 2: 150°C  
Rate2: 6°C  
Final Temp.: 260°C  
Detector: 5973 MSD  
Injector Mode: Splitless, 0.5min  
Carrier Gas: Helium, 30cm/sec  
Injection Volume: 1µL  
Interface/Source/Quad: 320°C, 250°C, 150°C

1. DBCP
2. Etr Diazole
3. Chloroneb
4. Propachlor
5. PCNB
6. Chlorobenzylate
7. Chloropropylate



visit [www.sge.com](http://www.sge.com) or contact our technical Customer Support Team on: [techsupport@sge.com](mailto:techsupport@sge.com)

SGE International Pty. Ltd.  
email: support@sge.com

SGE Incorporated (USA)  
email: usa@sge.com

SGE (France) Sarl  
email: france@sge.com

SGE Deutschland GmbH  
email: germany@sge.com

SGE Japan Inc.  
email: sgejpn@itjit.ne.jp

SGE Australia Pty. Ltd.  
email: sales@sge.com

SGE Europe Ltd. (UK)  
email: uk@sge.com

SGE (Italia) Srl.  
email: sge.italia@tin.it

SGE China Service Centre  
email: sge@bj.col.com.cn

SGE India  
email: sgeindia@bom4.vsnl.net.in