

ARO 10 AROMATICS

Analysis of Polynuclear Aromatic Hydrocarbons on BPX35

KEYWORDS:

EPA Method 610

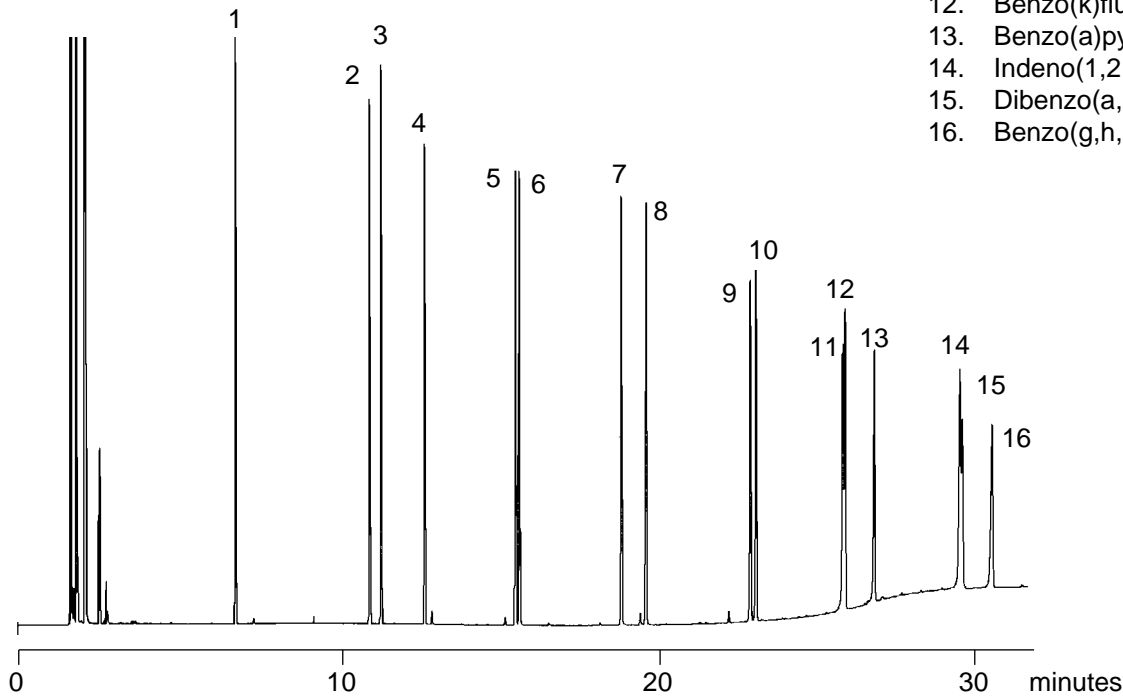
EPA Method 625

PAH

Part No.: 054714
 Phase: BPX35, 0.25µm
 Column: 30m x 0.22mm I.D.
 Initial Temp.: 100°C, 1 min
 Rate: 10°C/min.
 Final Temp.: 360°C, 10 min
 Carrier Gas: He, 25 psi
 Detector: F.I.D., 380°C

Components

1. Naphthalene
2. Acenaphthylene
3. Acenaphthene
4. Fluorene
5. Phenanthrene
6. Anthracene
7. Pyrene
8. Fluoranthene
9. Benzo(a)anthracene
10. Chrysene
11. Benzo(b)fluoranthene
12. Benzo(k)fluoranthene
13. Benzo(a)pyrene
14. Indeno(1,2,3,-c,d)pyrene
15. Dibenzo(a,h)anthracene
16. Benzo(g,h,i)perylene



visit www.sge.com or contact our technical Customer Support Team on: techsupport@sge.com

SGE International Pty. Ltd.
email: support@sge.com

SGE Incorporated (USA)
email: usa@sge.com

SGE (France) Sarl
email: france@sge.com

SGE Deutschland GmbH
email: germany@sge.com

SGE Japan Inc.
email: sgejpn@itjit.ne.jp

SGE Australia Pty. Ltd.
email: sales@sge.com

SGE Europe Ltd. (UK)
email: uk@sge.com

SGE (Italia) Srl.
email: sge.italia@tin.it

SGE China Service Centre
email: sge@bj.col.com.cn

SGE India
email: sgeindia@bom4.vsnl.net.in