

AMI 02 AMINES

Analysis of Aniline Impurities on BPX5

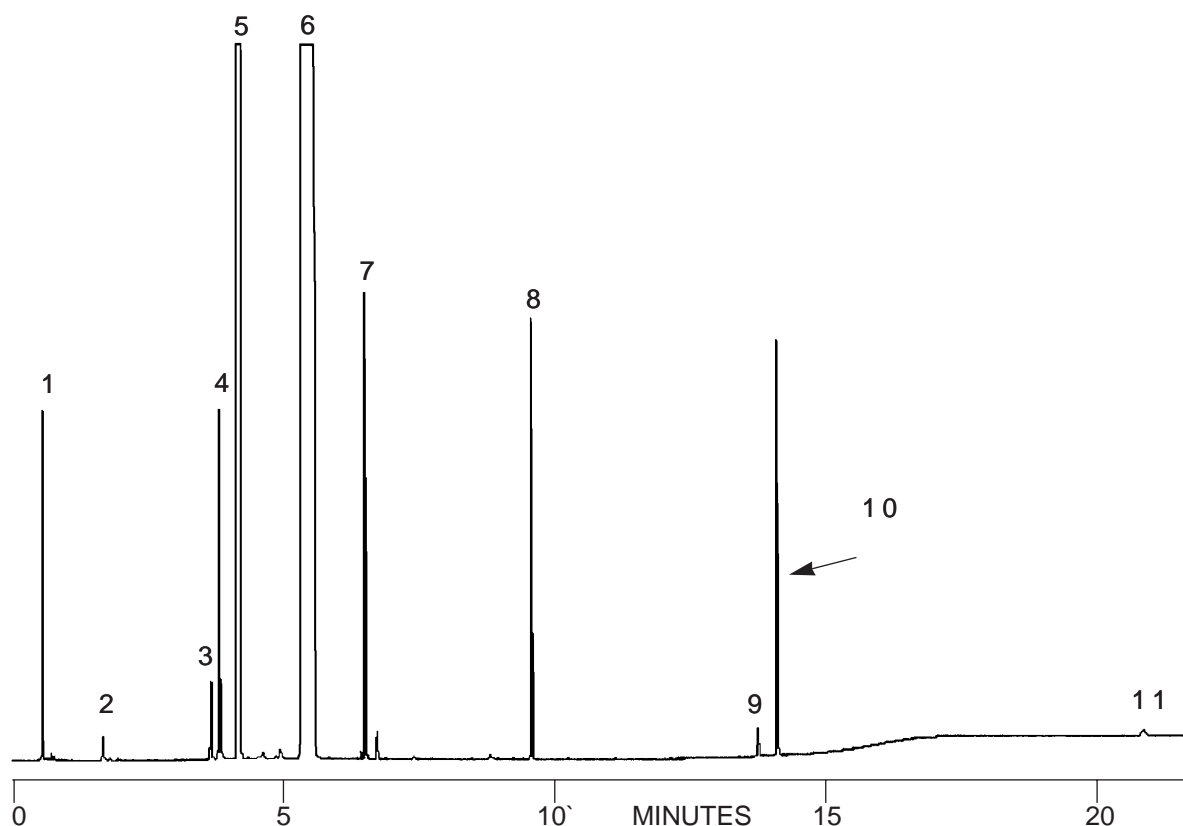
Notes: Thick film BPX5 column provides excellent separation with high temperature compatibility

ANILINE IMPURITIES

Part No.: 054127
 Phase: BPX5, 1.0 µm
 Column: 12m x 0.32mm I.D.
 Initial Temp.: 50°C, 1 min
 Rate 1: 15°C/min
 Final Temp.1: 120°C
 Rate 2: 20°C/min
 Final Temp.2: 330°C, 10 min
 Detector: FID, 380°C
 Injector: Split
 Carrier Gas: He, 4 psi

Components

1. Methanol
2. Cyclohexane
3. Cyclohexanone
4. Cyclohexylamine
5. Cyclohexanol
6. Aniline
7. Toluidine
8. Unknown
9. Diaminodiphenylmethane
10. p,p' - Diaminodiphenyl- methane
11. Unknown



visit www.sge.com or contact our technical Customer Support Team on: techsupport@sge.com

SGE International Pty. Ltd.
email:support@sge.com

SGE Incorporated (USA)
email:usa@sge.com

SGE (France) Sarl
email:france@sge.com

SGE Deutschland GmbH
email:germany@sge.com

SGE Japan Inc.
email:sgejpn@itjit.ne.jp

SGE Australia Pty. Ltd.
email:sales@sge.com

SGE Europe Ltd. (UK)
email:uk@sge.com

SGE (Italia) Srl.
email:sge.italia@tin.it

SGE China Service Centre
email:sge@bj.col.com.cn

SGE India
email:sgeindia@bom4.vsnl.net.in