

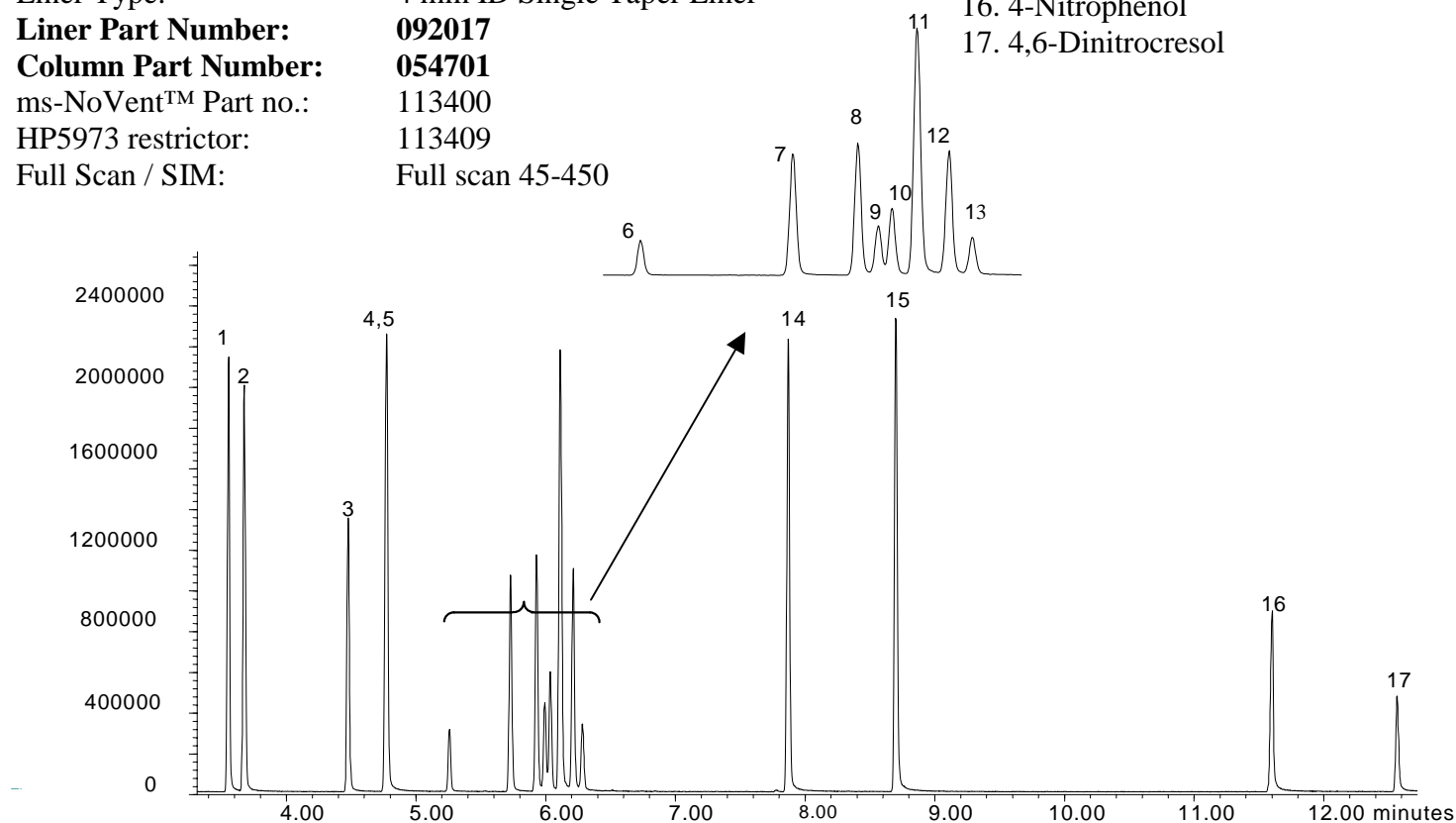
ALC 09 ALCOHOLS

Analysis of a Phenols Mixture on BPX35

Phase: BPX35, 0.25µm film
Sample: 200ppm in methanol
Column: 30m x 0.25 mm ID
Initial Temp: 80°C, 1 min.
Rate 1: 10°C/min to 300°C,
Final Temp: 300°C, 5 min.
Detector Type: Mass Spectrometer
Carrier Gas: He, 29.2 psi
Carrier Gas Flow: 1.7 mL/min.
Constant Flow: On
Average Linear Velocity: 35 cm/sec at 80°C
Injection Mode: Split
Split Ratio: 100:1
Injection Volume: 1 µL
Injection Temperature: 250°C
Autosampler: No
Liner Type: 4 mm ID Single Taper Liner
Liner Part Number: 092017
Column Part Number: 054701
ms-NoVent™ Part no.: 113400
HP5973 restrictor: 113409
Full Scan / SIM: Full scan 45-450

Components

1. Phenol
2. 2-Chlorophenol
3. o-Cresol
4. p-Cresol
5. m-Cresol
6. 2,5-Dimethylphenol
7. 2,4-Dimethylphenol
8. 2-Nitrophenol
9. p-Ethylphenol
10. 3,5-Dimethylphenol
11. 2,4-Dichlorophenol
12. 2,3-Dimethylphenol
13. Isopropylphenol
14. 4-Chloro-3-methylphenol
15. 2,4,6-Trichlorophenol
16. 4-Nitrophenol
17. 4,6-Dinitrocresol



visit www.sge.com or contact our technical Customer Support Team on: techsupport@sge.com

SGE International Pty. Ltd.
email:support@sge.com

SGE Incorporated (USA)
email:usa@sge.com

SGE (France) Sarl
email:france@sge.com

SGE Deutschland GmbH
email:germany@sge.com

SGE Japan Inc.
email:sgejpn@itjit.ne.jp

SGE Australia Pty. Ltd.
email:sales@sge.com

SGE Europe Ltd. (UK)
email:uk@sge.com

SGE (Italia) Srl.
email:sge.italia@tin.it

SGE China Service Centre
email:sge@bj.col.com.cn

SGE India
email:sgeindia@bom4.vsnl.net.in