

## ALC 02 ALCOHOLS

# Analysis of 18 Alcohols on BP20

### KEYWORDS:

Alcohols

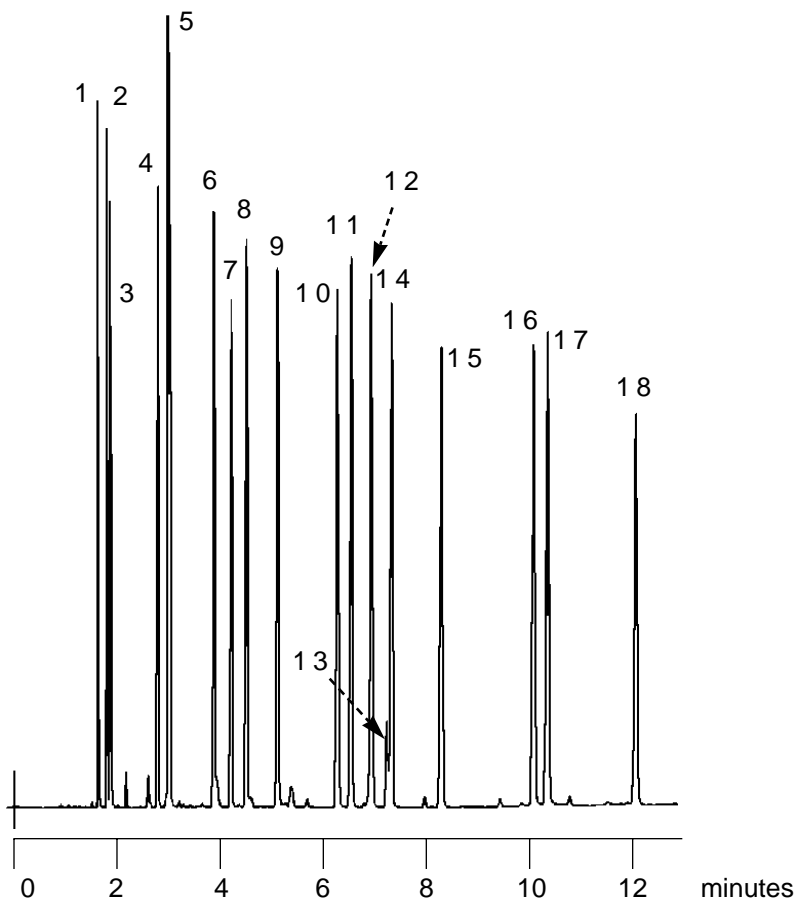
Volatile Alcohols

### ALCOHOLS

Part No.: 054427  
 Phase: BP20, 0.25µm film  
 Column: 30m x 0.25mm ID  
 Initial Temp: 45°C, 2 min  
 Rate: 3°C/min  
 Final Temp: 80°C, 0 min  
 Detector: FID  
 Sensitivity: 128 x 10<sup>-12</sup> AFS  
 Injection Mode: Split

### Components

- |  |                                   |
|--|-----------------------------------|
| 1. Methanol                                  | 11. Hexan-3-ol                    |
| 2. Propan-2-ol                               | 12. 2-Methyl Prop-2-en-1-ol       |
| 3. Ethanol                                   | 13. Crotyl Alcohol (2-Buten-1-ol) |
| 4. sec-Butan-1-ol                            | 14. Hexan-2-ol                    |
| 5. <i>n</i> -Propanol + 2Methyl-3-Buten-2-ol | 15. Pentan-1-ol                   |
| 6. <i>d,l</i> -3-Methyl-2-Butan-1-ol         | 16. 2-Methyl Pentan-1-ol          |
| 7. Pentan-3-ol                               | 17. 2-Ethyl Butan-1-ol            |
| 8. <i>d,l</i> -2-Pentan-1-ol                 | 18. Hexan-1-ol                    |
| 9. <i>n</i> -Butanol                         |                                   |
| 10. 2,4-Dimethyl Pentan-3-ol                 |                                   |



visit [www.sge.com](http://www.sge.com) or contact our technical Customer Support Team on: [techsupport@sge.com](mailto:techsupport@sge.com)

SGE International Pty. Ltd.  
 email: support@sge.com  
 SGE Australia Pty. Ltd.  
 email: sales@sge.com

SGE Incorporated (USA)  
 email: usa@sge.com  
 SGE Europe Ltd. (UK)  
 email: uk@sge.com

SGE (France) Sarl  
 email: france@sge.com  
 SGE (Italia) Srl.  
 email: sge.italia@tin.it

SGE Deutschland GmbH  
 email: germany@sge.com  
 SGE China Service Centre  
 email: sge@bj.col.com.cn

SGE Japan Inc.  
 email: sgejpn@itjit.ne.jp  
 SGE India  
 email: sgeindia@bom4.vsnl.net.in