

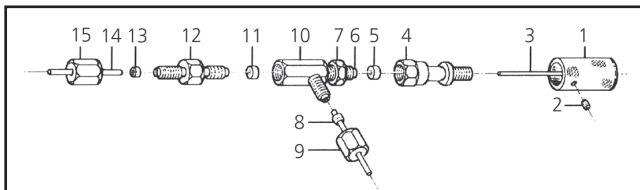
# STAINLESS STEEL ON/OFF VALVE

## SMOV-1

### Important

Turn off all flows before installing the valve or when replacing parts. The SMOV is designed to accept 1/16" OD flow lines. When operated at elevated pressures (up to 400 atmospheres) we recommend ends of the 1/16" connecting line be roughened to provide a firm grip for the ferrules.

PART NO. 1236283



### Packing List for SMOV

1236283	SMOV Valve	1
072657	GVF/16 Ferrules	5
1236101	Seal Seat Remover Tool	1
123681	VSV-6 Valve Seat	1
072650	PSR/16 PTFE Sealing Rings	2

### Vespel® Seat (11)

#### Replacement

Remove 1/16" line (14) and disconnect double ended union (12) then fully tighten control knob (1) onto assembly (4). This action pushes the Vespel® Seat from a support shoulder inside the valve body (10) which should then easily dislodge. If not, remove assembly (4) from body (10) and dislodge seat using seal-seat remover (wire). Insert wire through male threaded section (6) of body (10) to dislodge seat. Fit new seat into body (10) and reconnect double ended union (12) and firmly tighten. If control knob & assembly (4) has been removed, you should reconnect them using the following procedure:

- (i) Wind down the lock nut (7) to the base of thread (6).
- (ii) Unscrew control knob (1) a few turns from assembly (4).
- (iii) Screw (4) onto (6) and firmly

finger tighten.

- (iv) With a holding spanner on (4) and using another spanner, firmly tighten lock-nut (7) up to (4).

### PTFE Seal (5) Replacement

Two spare seals are provided in the unlikely event replacement is required. The PTFE seal (5) is located inside assembly (4). The method for replacement is as follows:

- (i) Remove assembly (4) from thread 6.
- (ii) Unscrew 6BA grub screw (2) from control knob (1) then unwind control knob from assembly (4).
- (iii) With the seal seat remover (wire) push out seal.
- (iv) Fit new seal and reassemble using the procedure indicated in items (i) to (iv) for Vespel® Seat Replacement.

#### AUSTRALIA & PACIFIC REGION

SGE Analytical Science Pty Ltd  
Toll Free: 1800 800 167  
Tel: +86 21 6407 9382  
Fax: +61 (0) 3 9874 4200  
Email: support@sge.com

#### CHINA

SGE Shanghai Representative Office  
Tel: +86 21 6407 9382  
Fax: +86 21 6407 9386  
Email: china@sge.com

#### FRANCE

SGE Europe Ltd  
Tel: +33 1 69 29 80 90  
Fax: +33 1 69 29 09 25  
Email: europe@sge.com

#### GERMANY

SGE GmbH  
Tel: +49 (0) 6155 / 60746 0  
Fax: +49 (0) 6155 / 60746 50  
Email: europe@sge.com

#### INDIA

SGE Laboratory Accessories Pvt Ltd  
Tel: +91 22 2471 5896  
Fax: +91 22 2471 6592  
Email: sgeindia@vsnl.com

#### JAPAN

SGE Japan Inc  
Tel: +81 45 222 2885  
Fax: +81 45 222 2887  
Email: japan@sge.com

#### MIDDLE EAST

SGE Gulf  
Tel: 00 971 6 557 3341  
Fax: 00 971 6 557 3541  
Email: gulfsupport@sge.com

#### UNITED KINGDOM

SGE Europe Ltd  
Tel: +44 1908 568 844  
Fax: +44 1908 566 790  
Email: europe@sge.com

#### UNITED STATES OF AMERICA

SGE Incorporated  
Toll Free: (800) 945 6154  
Tel: +1 512 837 7190  
Fax: +1 512 836 9159  
Email: usa@sge.com