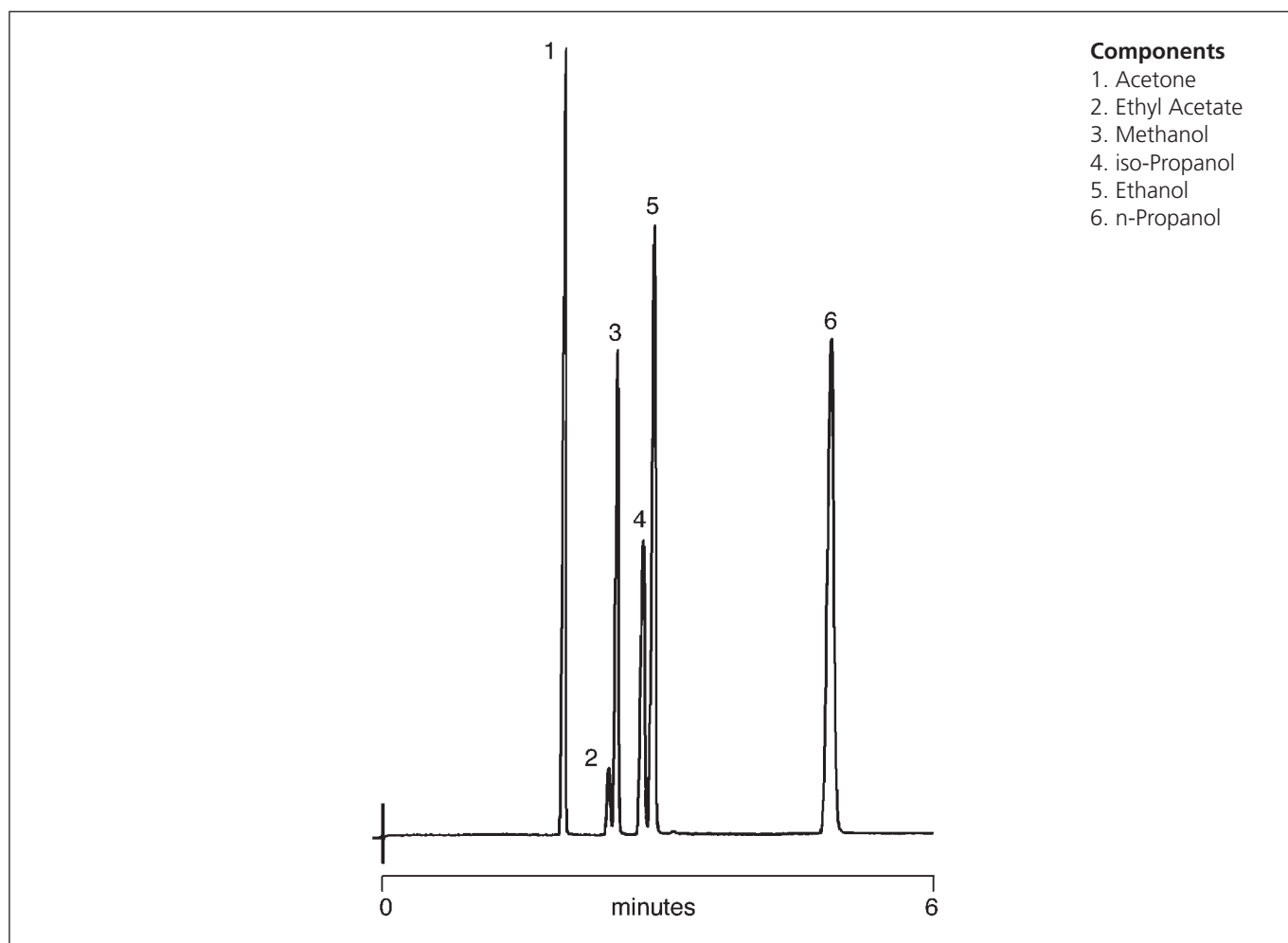


## ANALYSIS OF BLOOD ALCOHOL ON BP20

<b>Column Part No.:</b>	<b>054442</b>	Detector:	FID
Phase:	BP20, 1.0 $\mu\text{m}$ film	Sensitivity:	$64 \times 10^{-12}$ AFS
Column:	25 m x 0.32 mm ID	Injection Mode:	Split
Initial Temp:	Isothermal, 60 $^{\circ}\text{C}$		

Note: The BP20 column allows the use of aqueous solutions.



- Components**
1. Acetone
  2. Ethyl Acetate
  3. Methanol
  4. iso-Propanol
  5. Ethanol
  6. n-Propanol

For more information contact our technical customer support team on: [techsupport@sge.com](mailto:techsupport@sge.com)