

Smooth and Inert Glass Lining
for Optimal UHPLC Bio Applications



**ProteCol® BioInert
UHPLC Column Hardware**

- Improved column performance for bio applications
- Designed for continuous use at 20,000 psi (1,379 bar)
- Demonstrate the performance of your phase

ProteCol® BioInert UHPLC Column Hardware

Smooth and Inert Glass Lining for Optimal UHPLC Bio Applications

ProteCol BioInert UHPLC column hardware provides the foundation for improved separations and analysis. With the advances in phase material and instruments becoming more sensitive and selective, ProteCol BioInert UHPLC column hardware contribute to further improvements on performance.

Traditional UHPLC column hardware is made from stainless steel, with evidence the internal column hardware and frits can both influence the behavior of analytes with known metal chelating activity. The surface roughness also contributes to dispersion effects, resulting in lower performance.

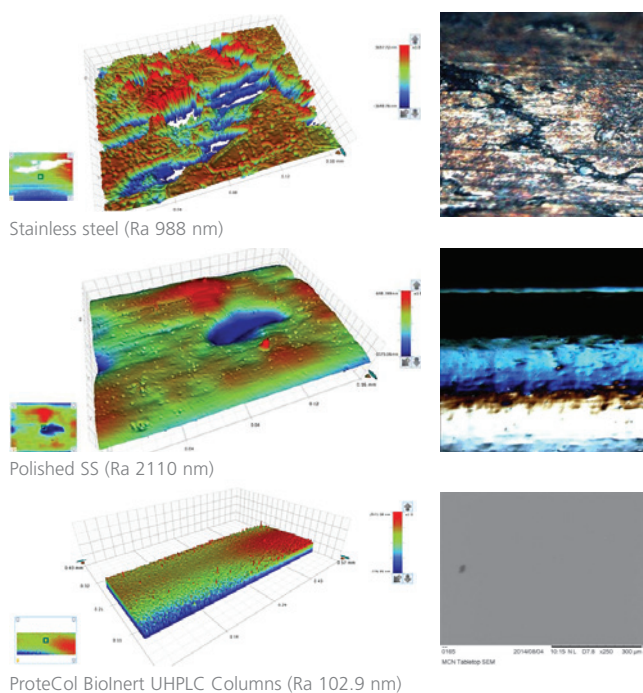
ProteCol BioInert UHPLC column hardware is glass lined, providing a tenfold improvement in smoothness and inertness, optimizing the performance of the analysis.

Configuration and Design

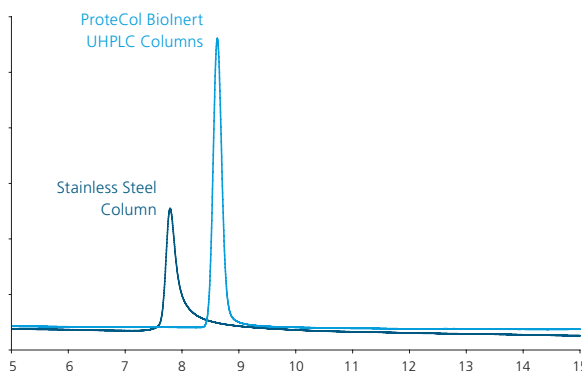
- ID configurations: 1.0 mm and 2.1 mm
- Length configurations: 50 mm, 100 mm and 150 mm



Performance



Optimized Column Performance



Sample: Metal-chelating probe
(1 μ g of 2-hydroxy-pyridine-N-oxide)
Columns: 150 mm x 4.6 mm ID at 40 °C
Buffer: 10 mM EDTA in Water
Flow: 1 mL/min
Phase: ProteCol C18 5 μ m

Discuss your UHPLC column hardware needs with us. We can introduce you to the benefits of ProteCol BioInert UHPLC column hardware, contact techsupport@sge.com.



Approved Distribution Partner