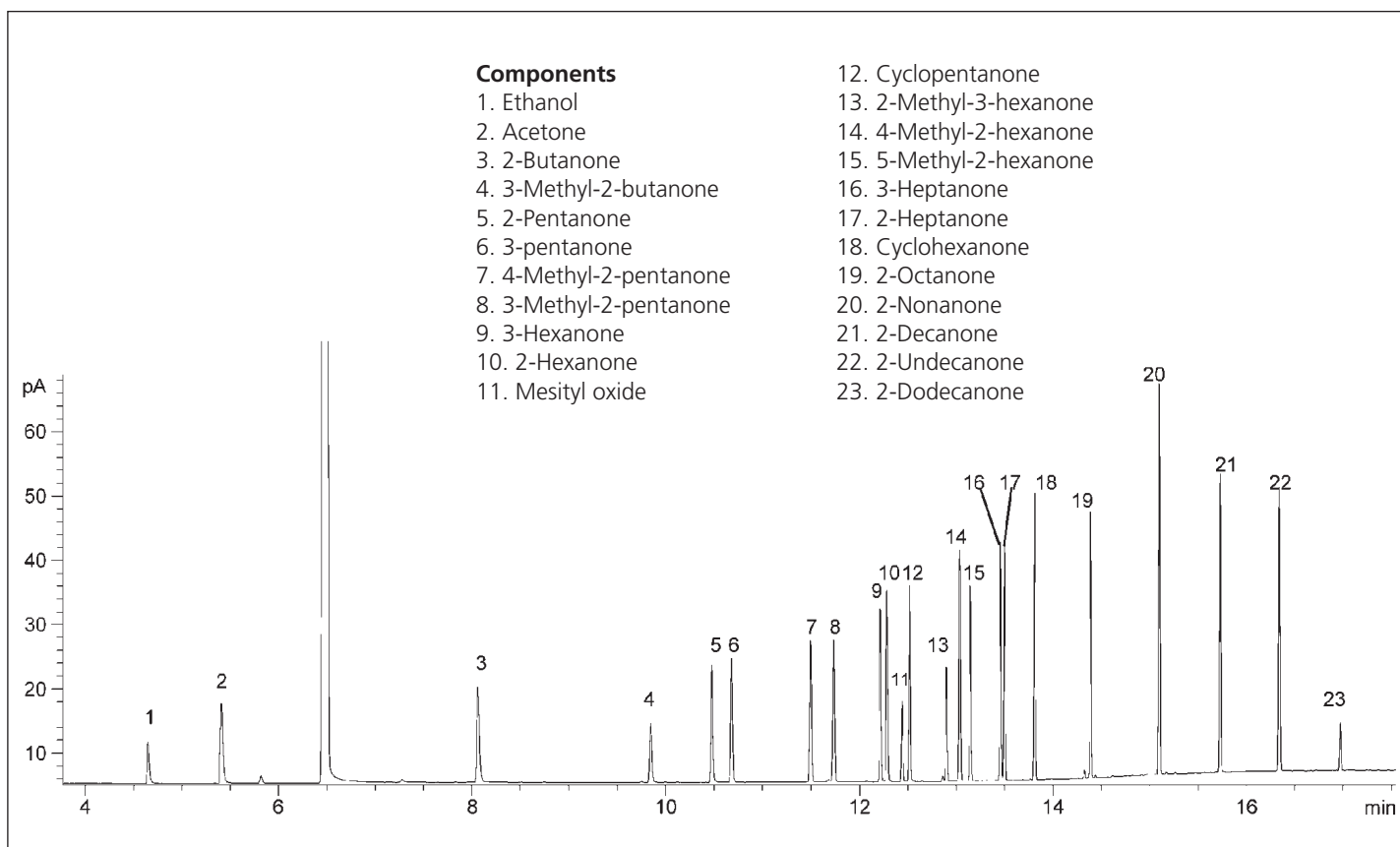


ANALYSIS OF KETONES ON THICK FILM BPX5

Column Part No.: 054123

Phase: BPX5, 1.0 µm film
 Sample: 300 ppm in dichloromethane
 Column: 60 m x 0.25 mm ID
 Initial Temp.: 40 °C, 5 min.
 Rate 1: 1 0 °C/min to 80 °C
 Rate 2: 30 °C/min to 260 °C
 Final Temp: 260 °C, 4 min.
 Detector Type: FID
 Detector Temp.: 360 °C
 Carrier Gas: He, 27.6 psi

Carrier Gas Flow: 1.9 mL/min.
 Constant Flow: On
 Average
 Linear Velocity: 35 cm/sec at 40 °C
 Injection Mode: Split
 Split Ratio: 100:1
 Injection Volume: 0.4 µL
 Injection Tem.: 250 °C
 Liner Type: 4 mm ID
 Single Taper Liner
 Liner Part Number: 092017



For more information contact our technical customer support team on: techsupport@sge.com