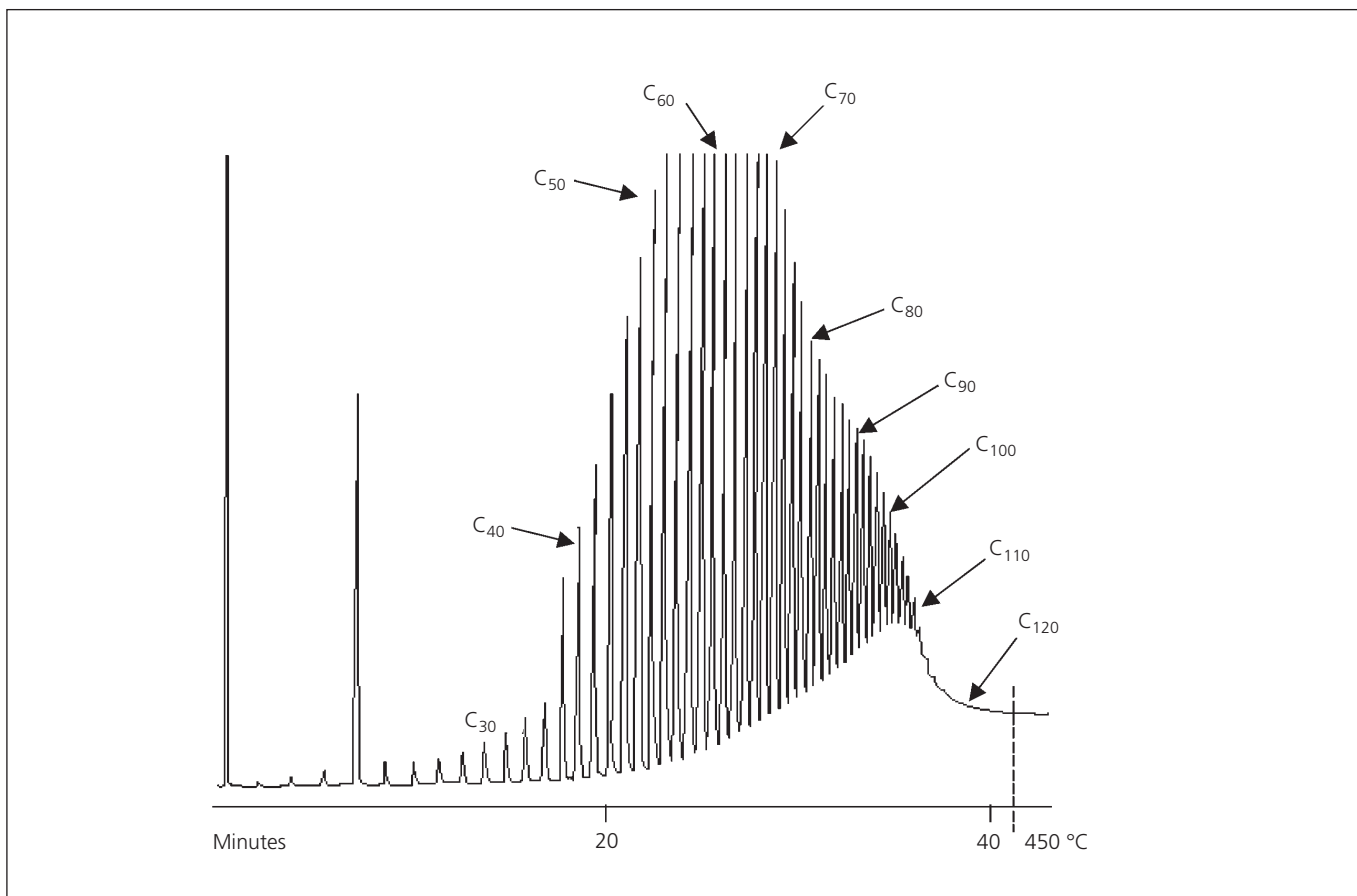


ANALYSIS OF POLYWAX 1000 ON AN ALUMINIUM CLAD HT5

Column Part No.:	054673	Rate:	10 °C/min
Phase:	HT5, 0.075 µm film	Final Temp.:	450 °C, 10 min
Column:	5 m x 0.53 mm ID	Carrier Gas:	He, 20 mL/min
Initial Temp.:	40 °C, 1 min	Solvent:	CS ₂



For more information contact our technical customer support team on: techsupport@sge.com