

BPX50 50 % PHENYL COLUMN

- Ideal for GC/MS application
 - Exceptionally low column bleed even at 350 °C
 - Alternative confirmation column for EPA & Pharmaceutical methods
 - Stable to 330 °C/350 °C
 - Excellent chromatographic inertness
- Replacement for: OV-17, SP-2250, DB-17MS, DB-17ht, Rtx-50, SPB-50, HP-50+ and HP-17

OPERATING TEMPERATURES

Minimum Temp: 40 °C
 Maximum Cycling Temp: 350 °C
 Maximum Continuous Temp: 330 °C

APPLICATION AREAS

Various EPA methods, ie. 604, 608, 8060, 8081; triazines/ herbicides, drug screening, steroids and a variety of pharmaceutical applications.

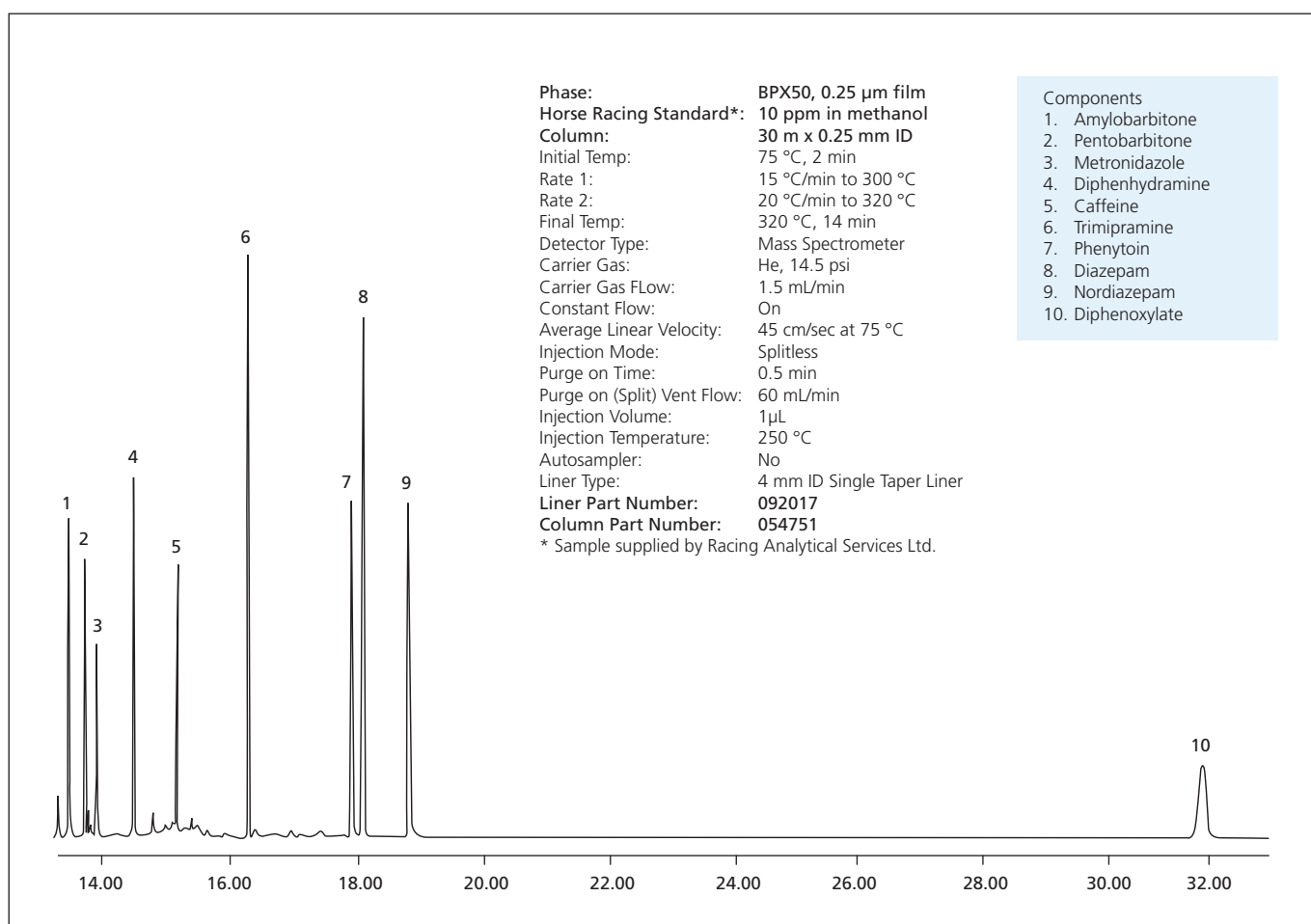


Figure 1: Horse Racing Drug Standard

SELECTIVITY

The BPX50 (50 % phenyl polysilphenylene-siloxane) column is the ultimate medium polarity column. It offers the lowest bleed levels possible while providing excellent chromatographic inertness.

Offering operating temperatures and column bleed levels more typical of the high performance MS grade non-polar 5 % phenyl polysiloxane columns, BPX50 is the ideal choice for the confirmation of EPA and pharmaceutical applications. The BPX50 can also be used as the primary analytical column for many applications.

Historically, low column bleed and high operating temperatures have been a fundamental problem with 50% phenyl columns, often limiting their use in GC/MS application. BPX50 has overcome these limitations, allowing EPA methods 604, 608, 8060, 8081, triazines/herbicides, drug screening, steroids and a variety of pharmaceutical applications to be routinely analysed.

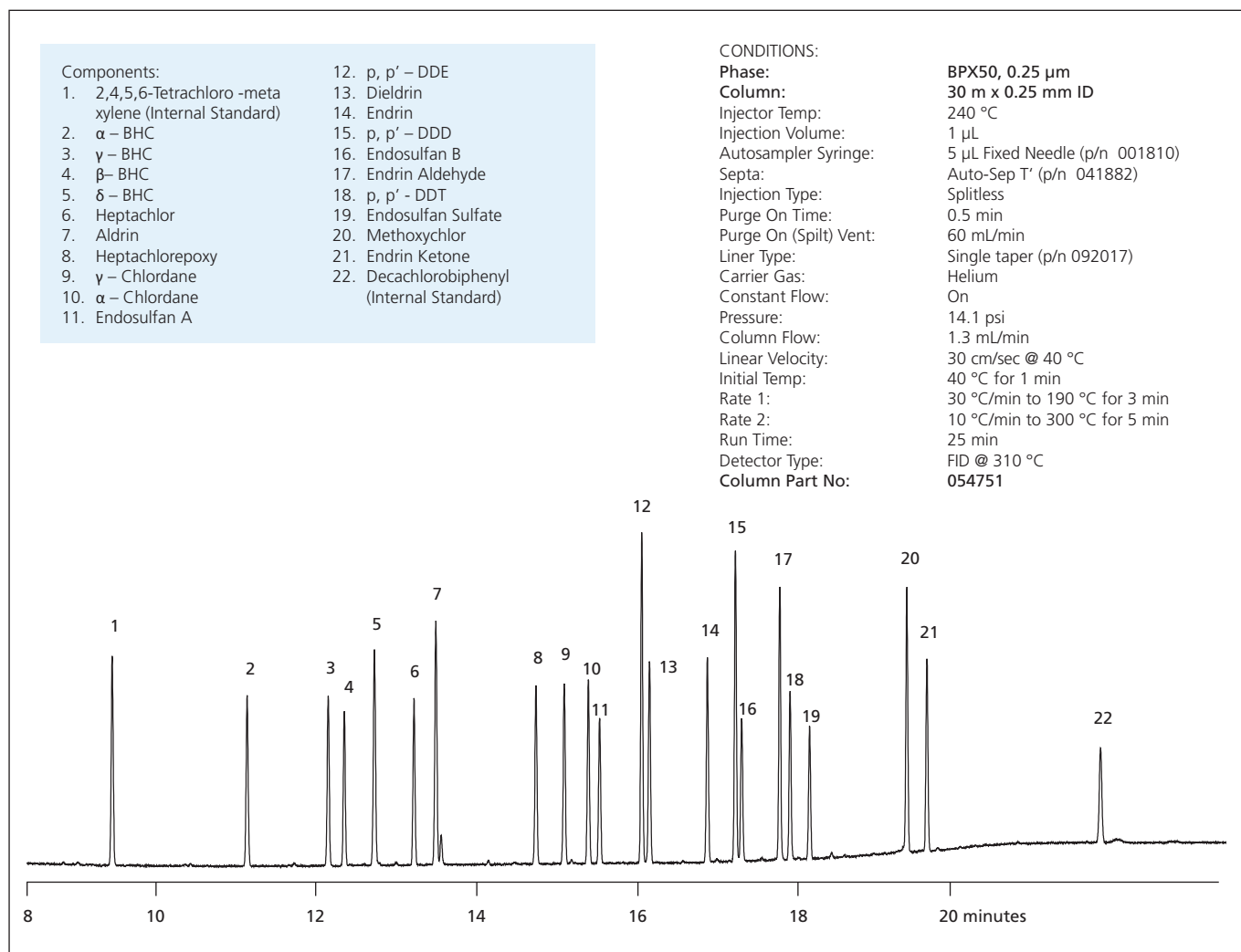


Figure 2. EPA Method 8081 Organochlorine Pesticides

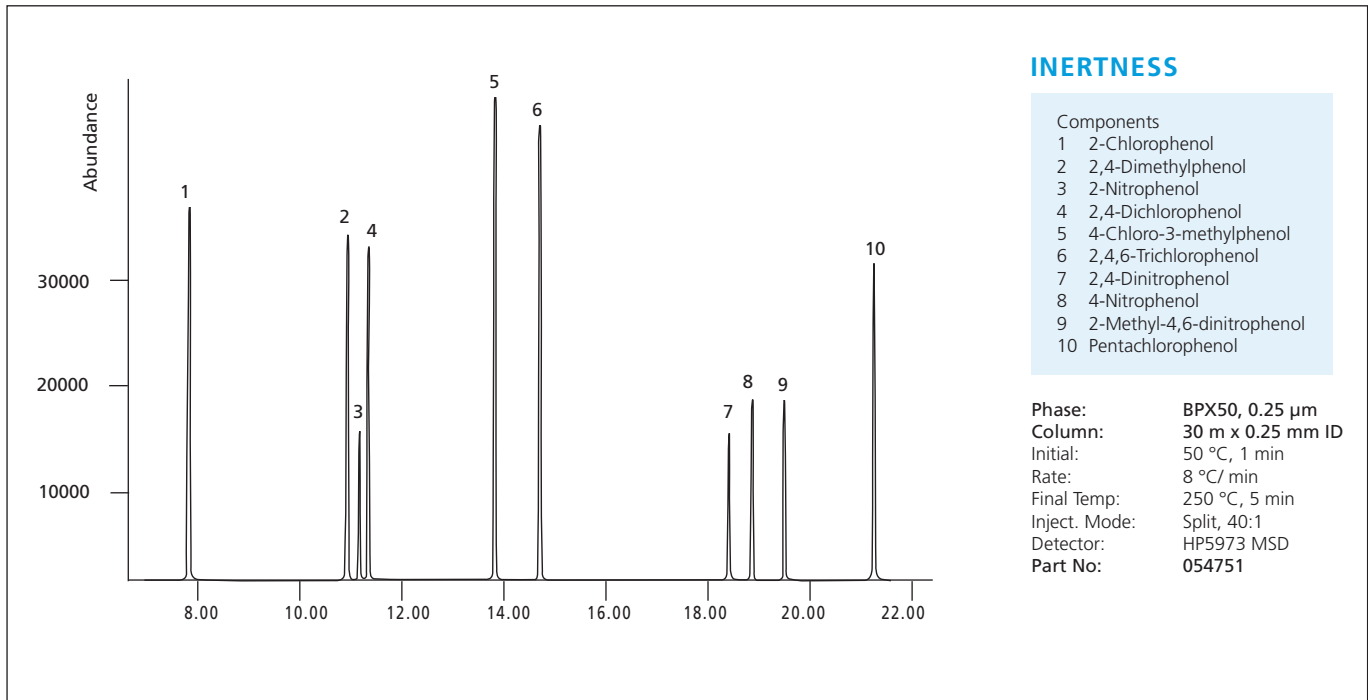


Figure 3. Analysis of EPA Phenols - 5 ng/component

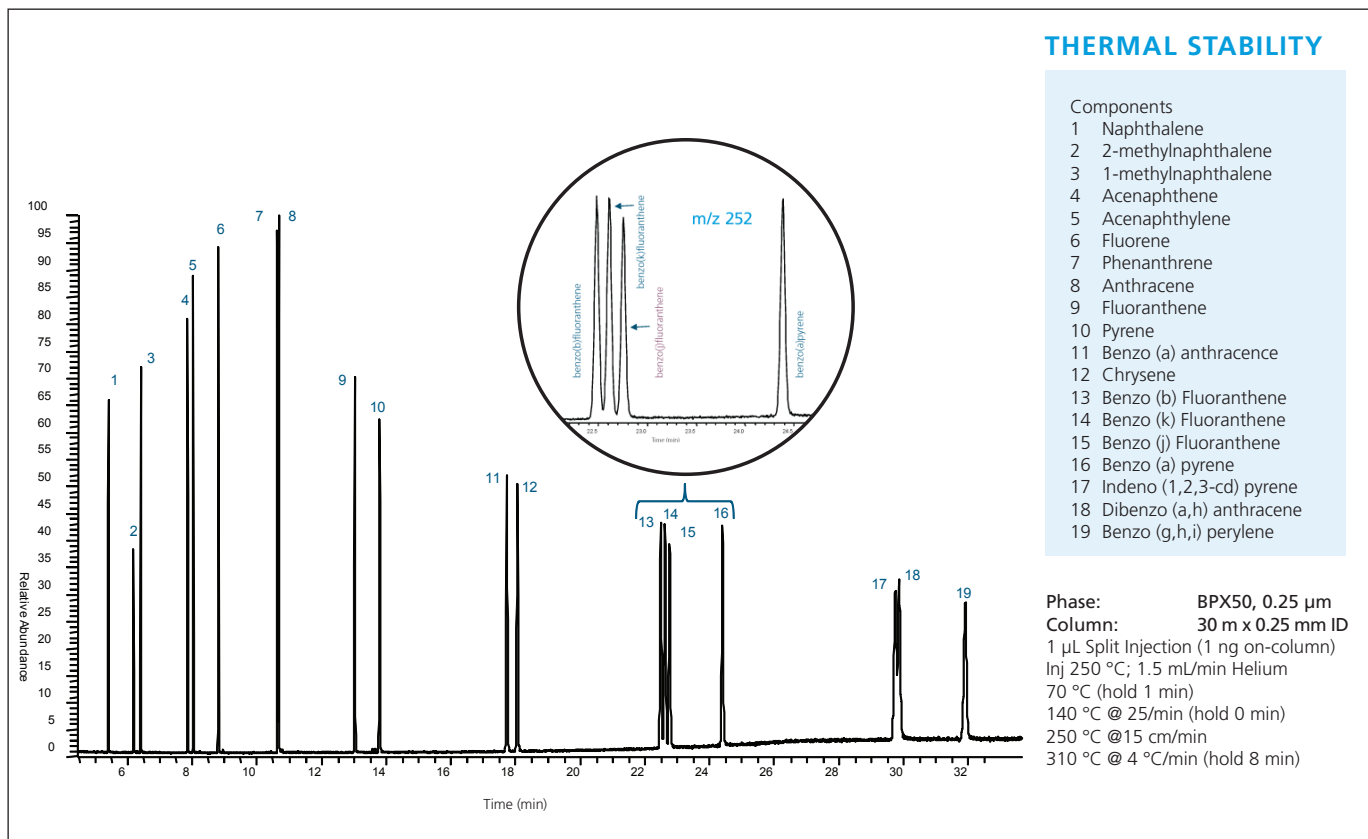


Figure 4. Expanded PAH Analysis, Nineteen Component - Total Ion Chromatogram (TIC), with critical separation highlighted.

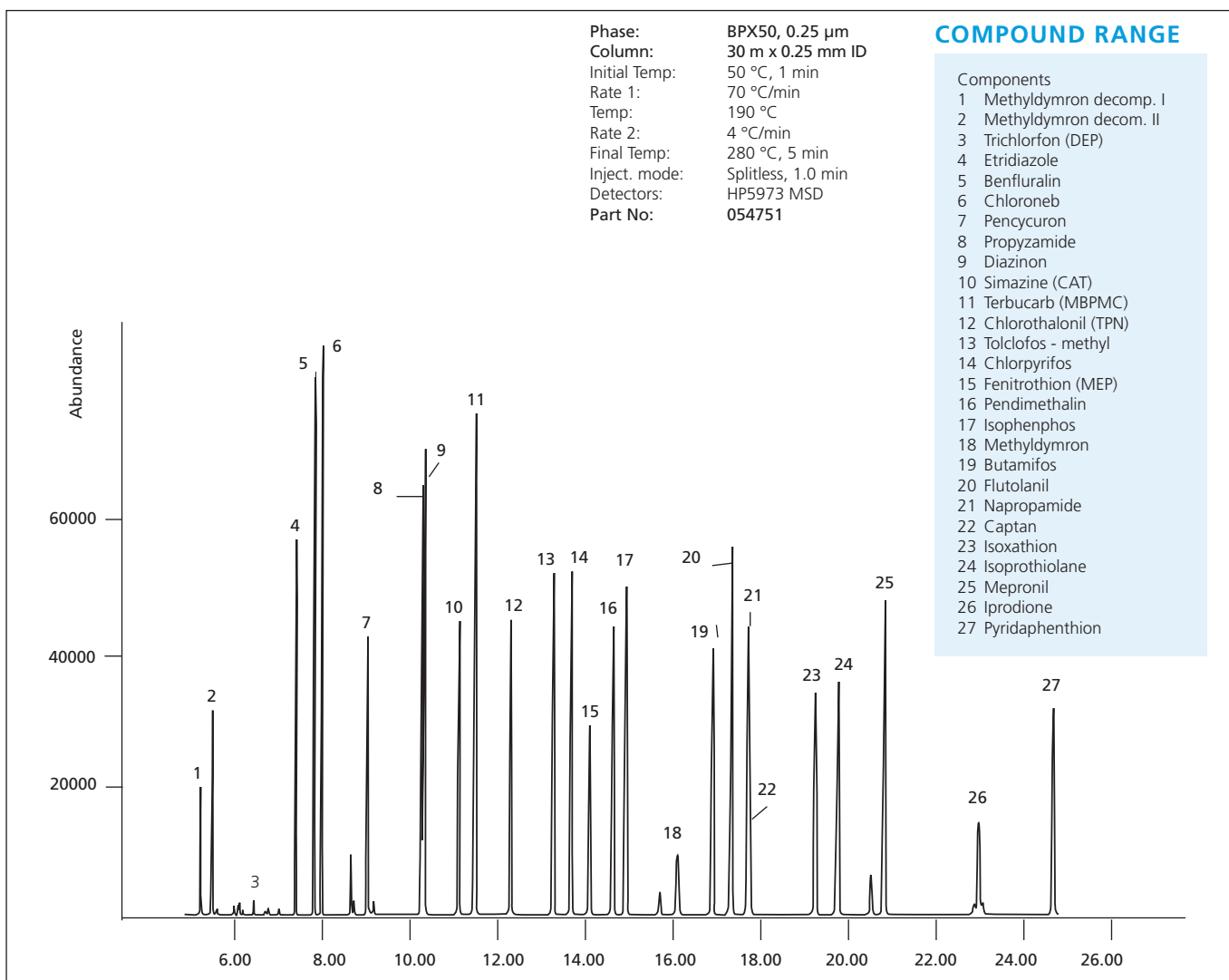


Figure 5. Analyses of some commonly used Herbicides & Pesticides

ORDERING INFORMATION - Phase Type BPX50

ID (mm)	Film Thickness (µm)	10 metre Part No.	15 metre Part No.	30 metre Part No.	60 metre Part No.
0.1	0.05	054739	-	-	-
0.1	0.07	054738	-	-	-
0.1	0.1	054740	-	-	-
0.15	0.15	-	-	054741	-
0.25	0.25	-	054750	054751	054752
0.32	0.25	-	054760	054761	054762
0.53	0.5	-	054770	054771	-
0.53	1	-	-	054772	-

<p>AUSTRALIA & PACIFIC REGION SGE Analytical Science Pty Ltd Toll Free: 1800 800 167 Tel: +61 (0) 3 9837 4200 Fax: +61 (0) 3 9874 5672 Email: support@sge.com</p>	<p>CHINA SGE Shanghai Representative Office Tel: +86 21 6407 9382 Fax: +86 21 6407 9386 Email: china@sge.com</p>	<p>MIDDLE EAST SGE Gulf Tel: +971 6 557 3341 Fax: +971 6 557 3541 Email: gulfsupport@sge.com</p>
<p>EUROPE SGE Europe Ltd European Head Office Toll Free: 00800 2790 8999 Toll Free Fax: 00800 2626 2609 Tel: +44 1908 568 844 Fax: +44 1908 566 790 Tel France: +33 1 69 29 80 90 Fax France: +33 1 69 29 09 25 Tel Germany: +49 (0) 6155 / 60746 0 Fax Germany: +49 (0) 6155 / 60746 50 Email: europe@sge.com</p>	<p>INDIA SGE Laboratory Accessories Pvt Ltd Tel: +91 22 24715896 Fax: +91 22 24716592 Email: sgeindia@vsnl.com</p>	<p>UNITED STATES OF AMERICA SGE Incorporated Toll Free: (800) 945 6154 Tel: +1 512 837 7190 Fax: +1 512 836 9159 Email: usa@sge.com</p>
<p>JAPAN SGE Japan Inc Tel: +81 45 222 2885 Fax: +81 45 222 2887 Email: japan@sge.com</p>	<p>SGE Analytical Science www.sge.com</p>	