

Imagine resolving basic analytes in reverse phase across a wide pH range without changing columns

ProteCol™ HPLC Columns turn imagination into results



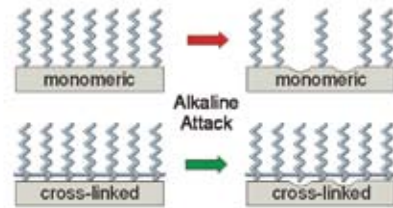
ProteCol™ HPH (High pH) columns solve the problem of resolving analytes when using solvents of varying pH eliminating the need to change columns.

How do ProteCol™ HPH columns turn imagination into results?



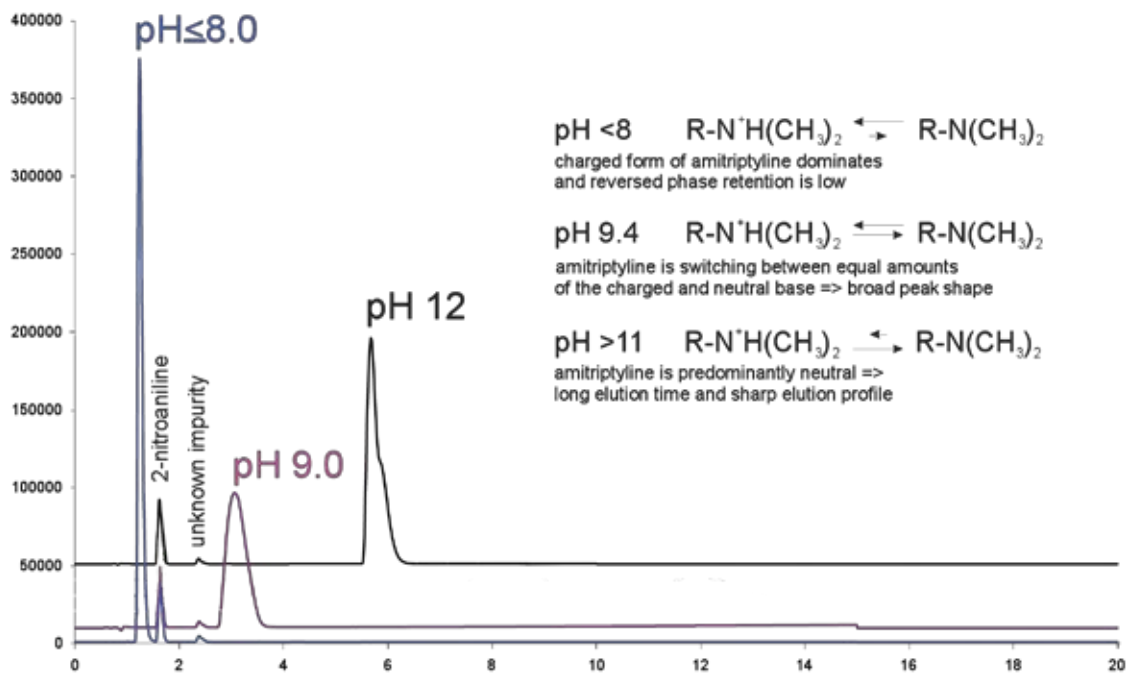
ProteCol™ HPH columns feature:

- Modified bonded phase making it easy to work from low to high pH using the same column
- Inert hardware and flow path eliminating non-specific interactions
- Novel chemical bonding ensuring stability under extreme alkaline and acidic conditions.



ProteCol™ HPH phase bonding

Improve peak resolution by altering pH without the need to change columns

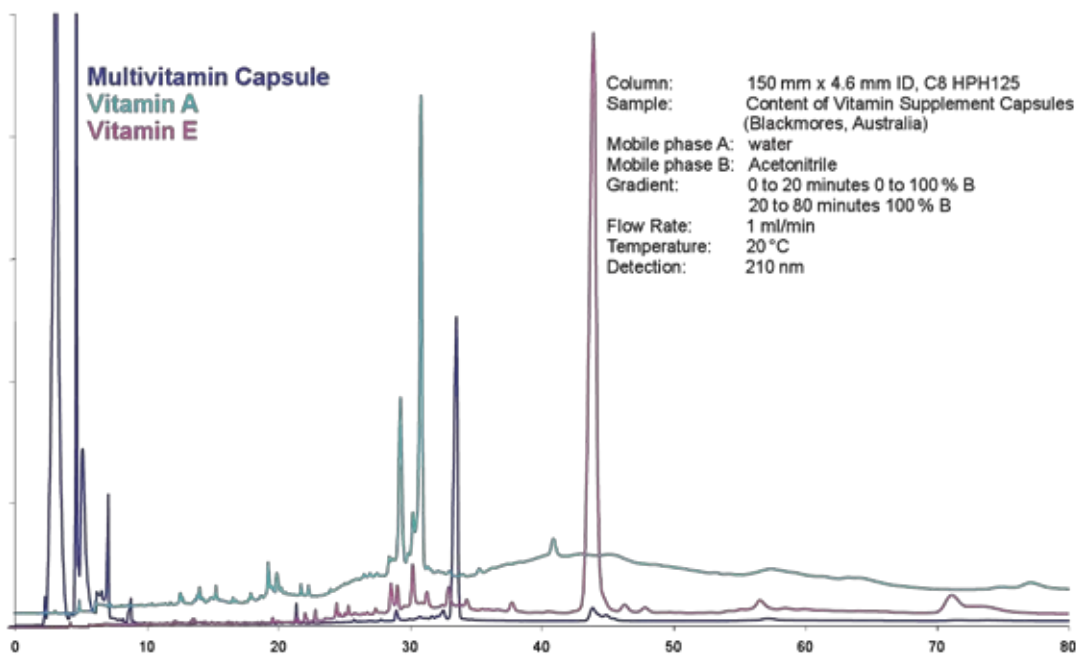


Analysis of Amitriptyline at varying pH on a C18 HPH 150 mm x 4.6 mm (P/N 250112)

ProteCol™ HPH Columns turn imagination into results by enabling separation of difficult to resolve basic analytes across a wide pH range.

- Elute highly hydrophobic compounds, such as lipids or fat-soluble vitamins.
- Reducing the ligand chain length from 18 to 8 carbon atoms and using a high concentration of organic modifier allows separation of substances which would not normally elute from a C18 column.
- Ideal general purpose column as it can be regenerated with alkaline wash.

The analysis of Vitamin A, Vitamin E and a Multivitamin (all in capsule form) on a C8 HPH125 column.

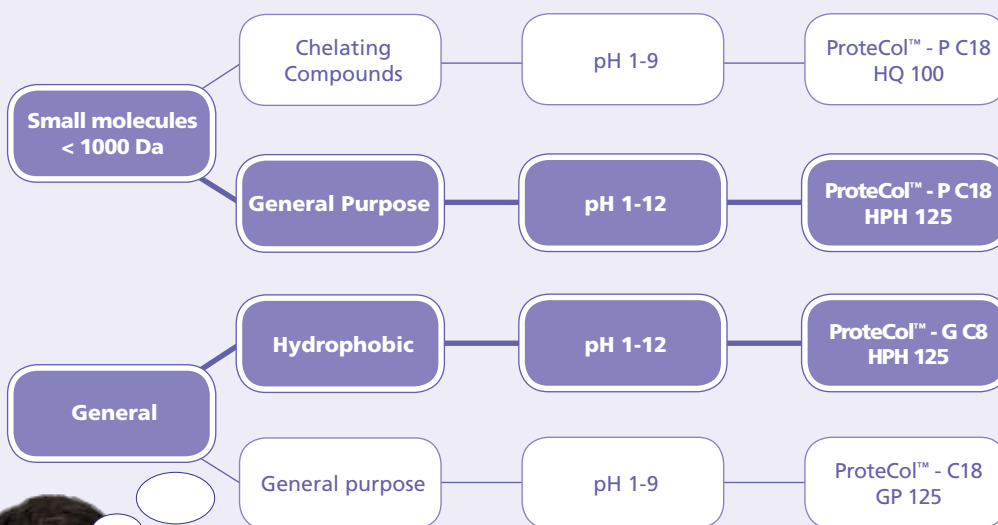


Imagine the time you can save not changing columns!

Fat-soluble vitamins separated on a C8 HPH125 column (P/N 250190)



ProteCol™ HPLC Column Selection Guide



ProteCol™ HPLC Column Specifications and Part Numbers

ProteCol™ Column C8	Stationary Phase	Pore Size (Å)	Particle Size (µm)	Pore Volume (mL)	Surface Area (m²/g)	Carbon Load (%)	Calculated Bonded Phase (µmol/m²)	ID Coverage (mm)	Length (mm)	Part Number
C8 HPH 125	C8 High pH	120	5	1.0 ± 0.1	300 ± 40	11.7	4.0	2.1	150	250197
C8 HPH 125	C8 High pH	120	5	1.0 ± 0.1	300 ± 40	11.7	4.0	2.1	250	250195
C8 HPH 125	C8 High pH	120	5	1.0 ± 0.1	300 ± 40	11.7	4.0	4.6	150	250192
C8 HPH 125	C8 High pH	120	5	1.0 ± 0.1	300 ± 40	11.7	4.0	4.6	250	250190
Guard and Trap Columns										
C8 HPH 125 Guard	C8 High pH	120	5	1.0 ± 0.1	300 ± 40	11.7	4.0	2.1	10	250003
C8 HPH 125 Guard	C8 High pH	120	5	1.0 ± 0.1	300 ± 40	11.7	4.0	4	10	250005
ProteCol™ Column C18	Stationary Phase	Pore Size (Å)	Particle Size (µm)	Pore Volume (mL)	Surface Area (m²/g)	Carbon Load (%)	Calculated Bonded Phase (µmol/m²)	ID Coverage (mm)	Length (mm)	Part Number
P C18 HPH 125	C18 High pH	120	5	1.0 ± 0.1	300 ± 40	20.9	2.9	2.1	250	250115
P C18 HPH 125	C18 High pH	120	5	1.0 ± 0.1	300 ± 40	20.9	2.9	2.1	150	250117
P C18 HPH 125	C18 High pH	120	5	1.0 ± 0.1	301 ± 40	20.9	2.9	4.6	250	250110
P C18 HPH 125	C18 High pH	120	5	1.0 ± 0.1	300 ± 40	20.9	2.9	4.6	150	250112
Guard and Trap Columns										
P C18 HPH 125 Guard	C18 High pH	120	5	1.0 ± 0.1	300 ± 40	20.9	2.9	2.1	10	250013
P C18 HPH 125 Guard	C18 High pH	120	5	1.0 ± 0.1	300 ± 40	20.9	2.9	4	10	250015

AUSTRALIA & PACIFIC REGION

SGE Analytical Science Pty Ltd
Toll Free: 1800 800 167
Tel: +61 (0) 3 9837 4200
Fax: +61 (0) 3 9874 5672
Email: support@sge.com

CHINA

SGE Shanghai Representative Office
Tel: +86 21 6407 9382
Fax: +86 21 6407 9386
Email: china@sge.com

MIDDLE EAST

SGE Gulf
Tel: +971 6 557 3341
Fax: +971 6 557 3541
Email: gulfsupport@sge.com

EUROPE

SGE Europe Ltd
European Head Office
Toll Free: 00800 2790 8999
Toll Free Fax: 00800 2626 2609
Tel: +44 1908 568 844
Fax: +44 1908 566 790
Tel France: +33 1 69 29 80 90
Fax France: +33 1 69 29 09 25
Tel Germany: +49 (0) 6155 / 60746 0
Fax Germany: +49 (0) 6155 / 60746 50
Email: europe@sge.com

INDIA

SGE Laboratory Accessories Pvt Ltd
Tel: +91 22 24715896
Fax: +91 22 24716592
Email: sgeindia@vsnl.com

JAPAN

SGE Japan Inc
Tel: +81 45 222 2885
Fax: +81 45 222 2887
Email: japan@sge.com

UNITED STATES OF AMERICA

SGE Incorporated
Toll Free: (800) 945 6154
Tel: +1 512 837 7190
Fax: +1 512 836 9159
Email: usa@sge.com

 **SGE Analytical Science**
www.sge.com