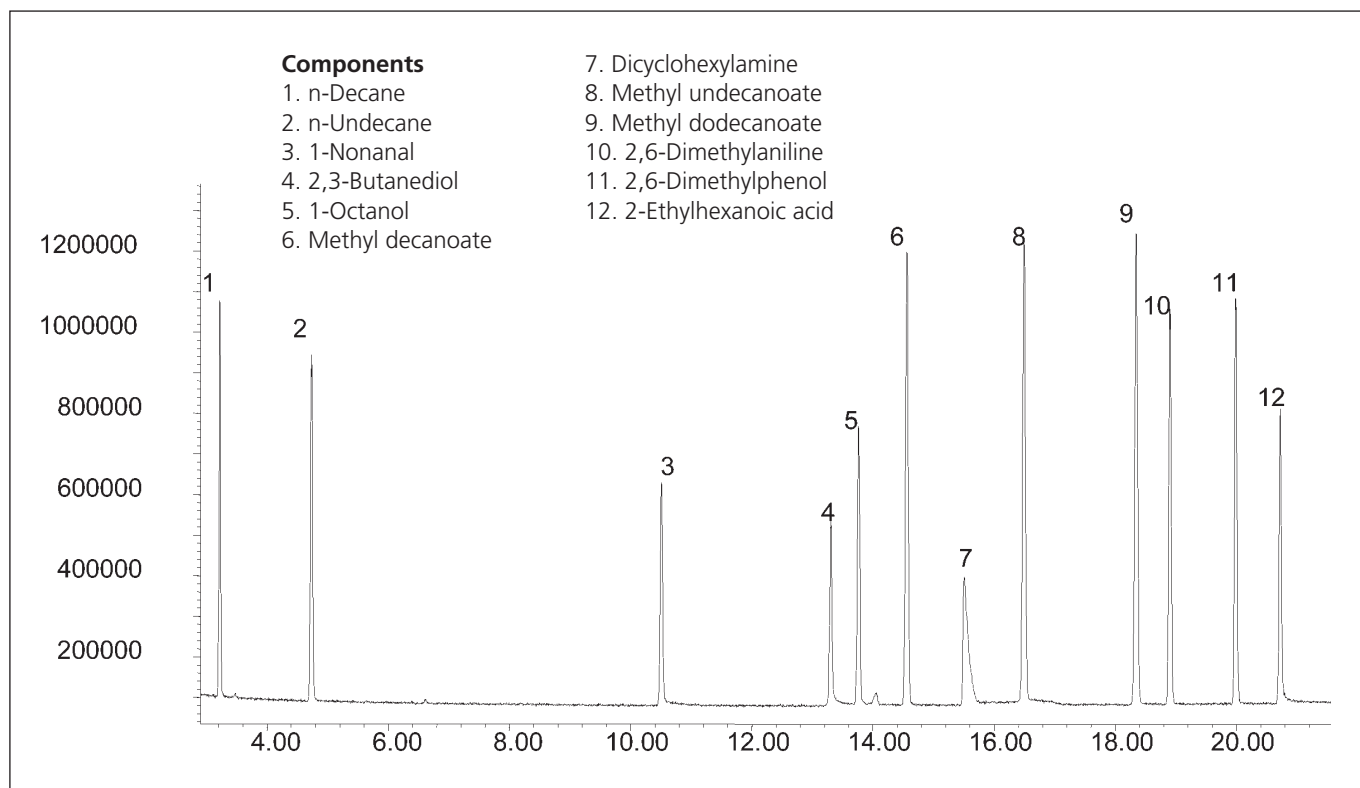


GROB TEST MIX ON SOLGEL-WAX™

Column Part No.: 054796

Phase: SolGel-WAX, 0.25 µm film
Sample: 200 ppm in dichloromethane
Column: 30 m x 0.25 mm ID
Initial Temp.: 40°C, 1 min.
Rate 1: 6 °C/min to 160 °C,
Final Temp.: 160 °C, 5 min.
Detector Type: Mass Spectrometer
Carrier Gas: He, 25.7 psi
Carrier Gas Flow: 1.8 mL/min.

Constant Flow: On
Average
Linear Velocity: 35 cm/sec at 40 °C
Injection Mode: Split
Split Ratio: 50:1
Injection Volume: 1 µL
Injection Temp.: 250 °C
Liner Type: 4 mm ID Single Taper Liner
Liner Part Number: 092017
Full Scan / SIM: Full scan 45-450



For more information contact our technical customer support team on: techsupport@sge.com