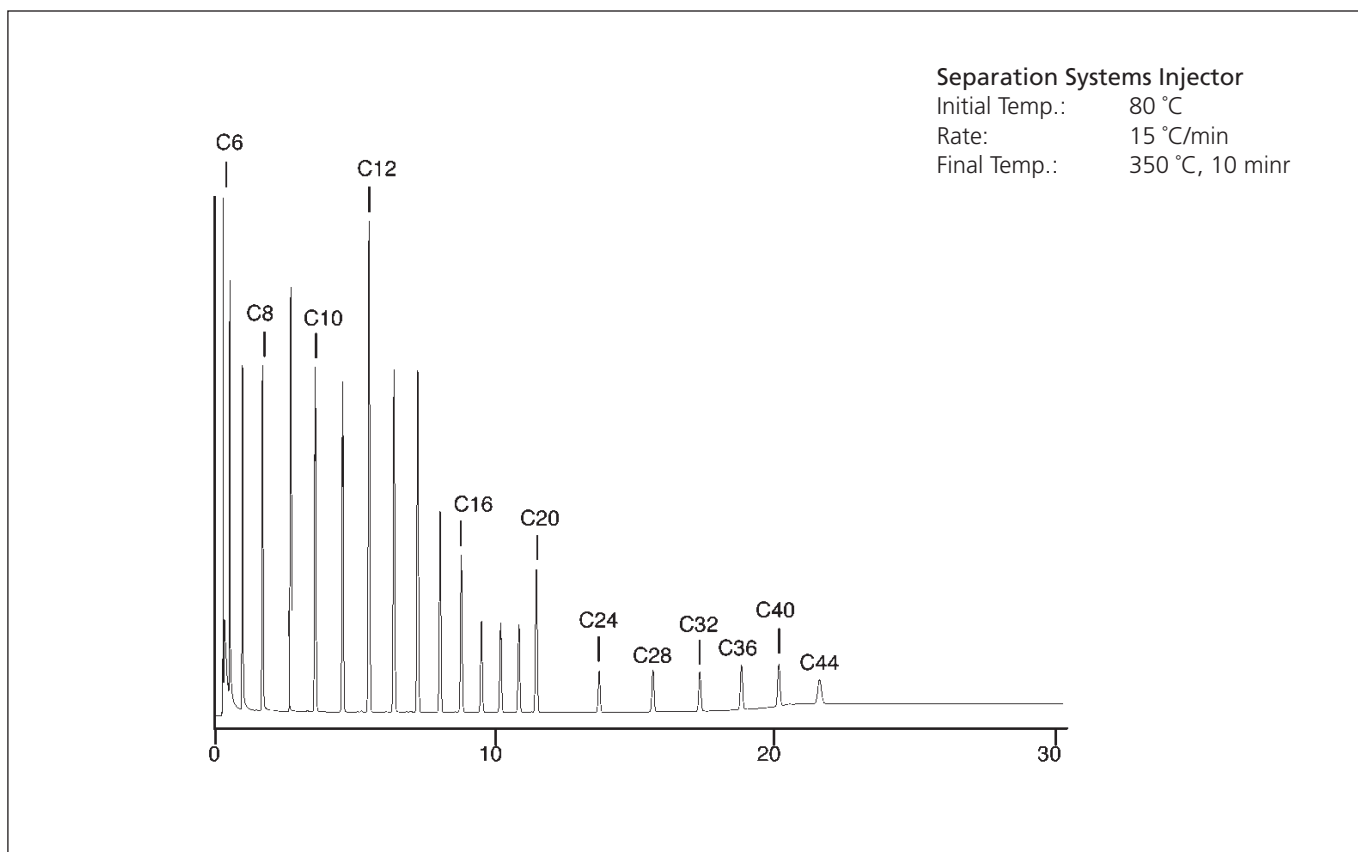


STANDARD FOR D2887 ON BPX1

Column Part No.:	054802	Final Temp.:	350 °C, 10min
Phase:	BPX1, 2.65 µm film	Detector Temp.:	400 °C
Column:	10 m x 0.53 mm ID	Carrier Gas:	He, 20 mL/min
Initial Temp.:	40 °C	Instrument:	HP 6890
Rate:	15 °C/min		



For more information contact our technical customer support team on: techsupport@sge.com