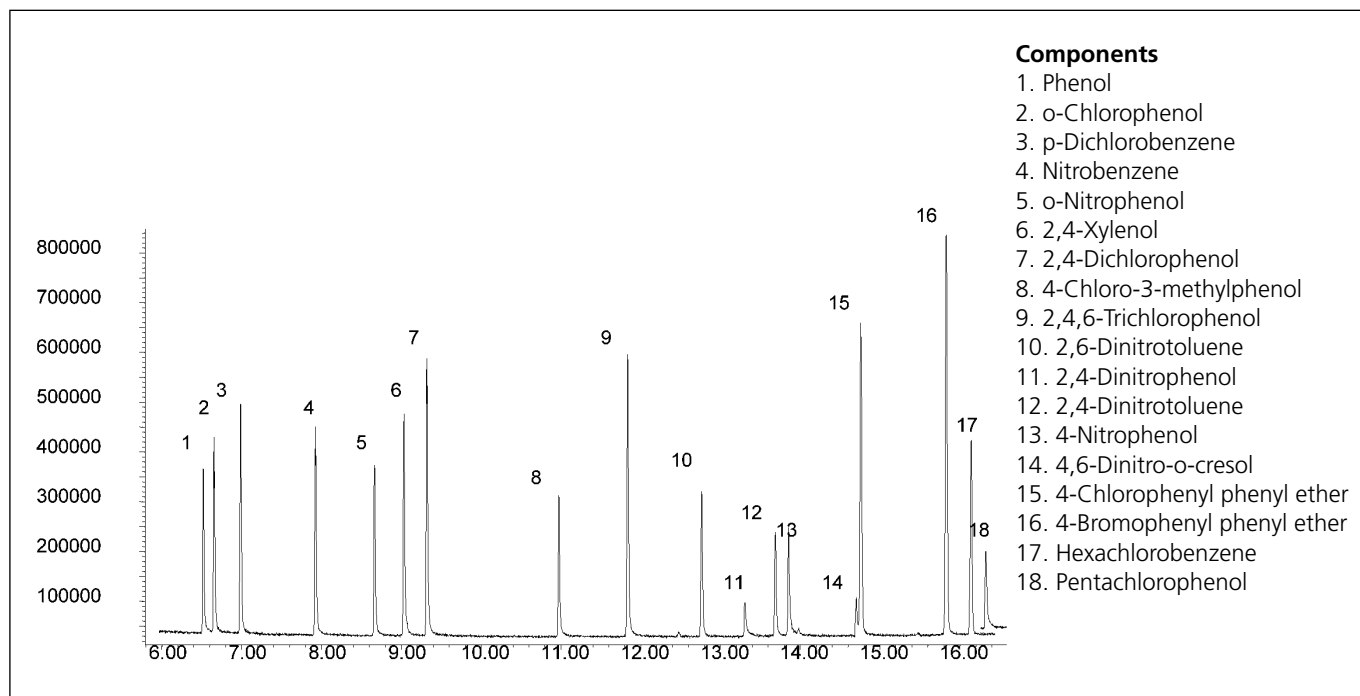


# ANALYSIS OF CHLORINATED AND NITROAROMATIC COMPOUNDS ON SOLGEL-1MS™

**Column Part No.: 054462**

Phase: SolGel-1ms 0.25 µm film  
 Sample: 200 ppm in dichloromethane  
 Column: 30 m x 0.25 mm ID  
 Initial Temp: 40 °C, 1 min.  
 Rate 1: 10 °C/min to 300 °C  
 Final Temp: 300 °C, 2 min.  
 Detector Type: MSD  
 Carrier Gas: He, 25.7 psi  
 Carrier Gas Flow: 1.8 mL/min.

Constant Flow: On  
 Average  
 Linear Velocity: 35 cm/sec, 40 °C  
 Injection Mode: Split  
 Split Ratio: 100 : 1  
 Injection Volume: 0.5 µL  
 Injection Tem: 250 °C  
 Liner Type: 4 mm ID Single Taper Liner  
 Liner Part No.: 092017  
 Full Scan / SIM: Full scan 45-450



For more information contact our technical customer support team on: [techsupport@sge.com](mailto:techsupport@sge.com)