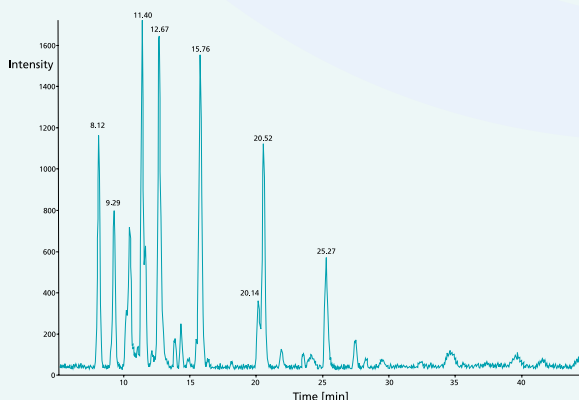


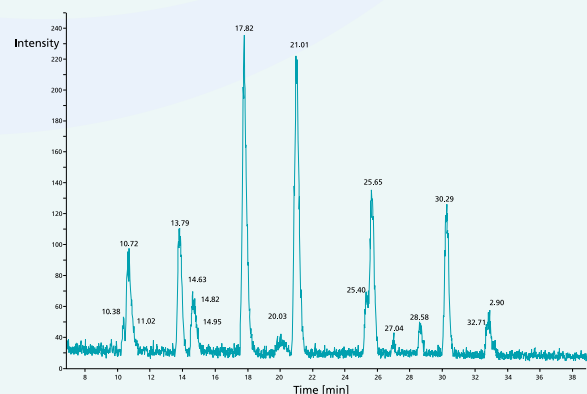


Maximize your peptide recovery — ReproSil™ trap columns for capillary LC

The combination of Dr. Maisch ReproSil™ pur ODS-3 or C18-AQ and SGE's unique ProteCol™ column design will deliver the best solution for maximum peptide recovery and zero dead volume connections.



Basepeak chromatogram of enolase trypsin digest 10fmol/µL (in 0.1% (v/v) TFA, 2% (v/v) acetonitrile loading solution), 8µL injected chromatogram with 10mm x 150µm ID ReproSil™ trap column.



Basepeak chromatogram of enolase trypsin digest 10fmol/µL (in 0.1% (v/v) TFA, 2% (v/v) acetonitrile loading solution), 8µL injected chromatogram onto high capacity 10mm x 300µm ID ReproSil™ trap column.

Thank you to Dr. Xiaomin Song, APAF, Macquarie University, Sydney - Australia.

Main benefits of using the combination of Reprosil™ and ProteCol™ trap columns:

- Reprosil™ is the reference material for leading proteomics scientists in the field.
- The trap column is the most essential part of a 1D and/or 2D approach as it removes unwanted salts and has to capture the comprehensive peptide content submitted to nanoLC. Reprosil™ captures the broadest range of peptides from hydrophilic to hydrophobic.
- Avoids peptide sequence composition dependent peak distortion such as broadening and/or peak tailing.
- Capturing of peptides using formic acid has no difference to the use of TFA as an ion pairing reagent. This underpins the extraordinary performance of Reprosil™ for mass spectrometry detection.
- Binding of peptides to Reprosil™ is not affected by high salt concentrations.
- The ProteCol™ design of trap columns avoids dead volumes which would reduce overall separation performance.
- The ProteCol™ design of trap columns is compatible with all nanoLC instruments currently available.

P/N	Descriptio	# per pack
2222066	ProteCol™ trap column 300 µm ID x 10 mm Reprosil™ C18-AQ, 3 µm	3
2222070	ProteCol™ trap column 300 µm ID x 10 mm Reprosil™ C18-AQ, 5 µm	3
2222072	ProteCol™ trap column 300 µm ID x 10 mm Reprosil™ ODS-3, 5 µm	3
2224072	ProteCol™ trap column 150 µm ID x 10 mm Reprosil™ C18-AQ, 5 µm	3

AUSTRALIA & PACIFIC REGION

SGE Analytical Science Pty Ltd
Toll Free: 1800 800 167
Tel: +61 (0) 3 9837 4200
Fax: +61 (0) 3 9874 5672
Email: support@sge.com

GERMANY

SGE GmbH
Tel: +49 (0) 6155 / 60746 0
Fax: +49 (0) 6155 / 60746 50
Email: europe@sge.com

MIDDLE EAST

SGE Gulf
Tel: 00 971 6 557 3341
Fax: 00 971 6 557 3541
Email: gulfsupport@sge.com

CHINA

SGE Shanghai Representative Office
Tel: +86 21 6407 9382
Fax: +86 21 6407 9386
Email: china@sge.com

INDIA

SGE Laboratory Accessories Pvt Ltd
Tel: +91 22 24715896
Fax: +91 22 24716592
Email: sgeindia@vsnl.com

UNITED KINGDOM

SGE Europe Ltd
Tel: +44 1908 568 844
Fax: +44 1908 566 790
Email: europe@sge.com

FRANCE

SGE Europe Ltd
Tel: +33 1 69 29 80 90
Fax: +33 1 69 29 09 25
Email: europe@sge.com

JAPAN

SGE Japan Inc
Tel: +81 45 222 2885
Fax: +81 45 222 2887
Email: japan@sge.com

UNITED STATES OF AMERICA

SGE Incorporated
Toll Free: (800) 945 6154
Tel: +1 512 837 7190
Fax: +1 512 836 9159
Email: usa@sge.com