

What is BPX5?

BPX5 is a 5% phenyl (equivalent) / 95% methyl polysilphenylene / siloxane phase.

Why use a 5% phenyl phase?

It is estimated that 80% of all analyses could be carried out on one column with one set of dimensions and film thickness. The 5% phenyl column is still a non-polar column but the small amount of phenyl content gives the phase a little edge in selectivity compared with the 100% methyl phases.

The non-polar phases tend to have lower bleed and are more robust compared with the more polar phases.

What can the BPX5 column be used for?

The BPX5 is a multi-purpose column which can be used for a range of applications from non-polar components (such as those in gasoline) to polar components such as amines, pesticides, triglycerides, drugs and polycyclic aromatic hydrocarbons.

For further information and details of conditions of the following chromatograms please request Publication No: AP-0069-C.

Figure 1. EPA Phenols (5ng)

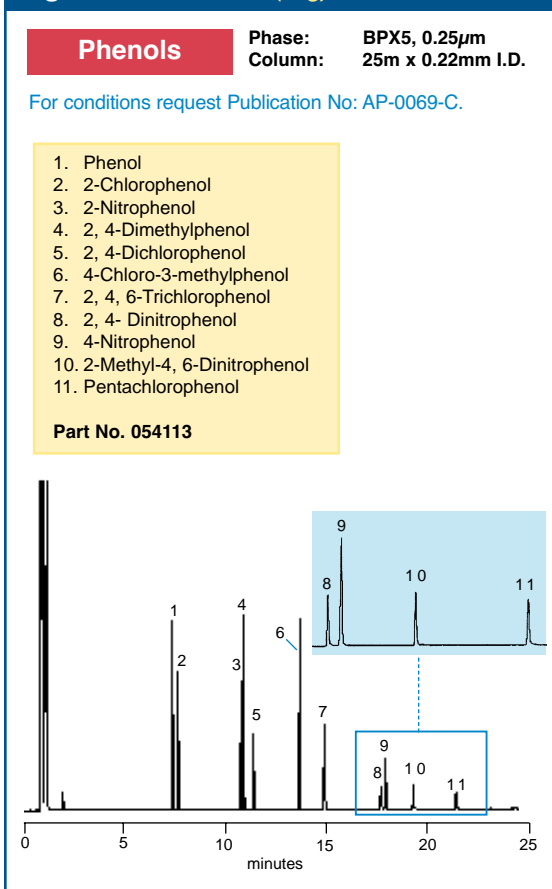


Figure 2. Triglycerides in Milk Fat

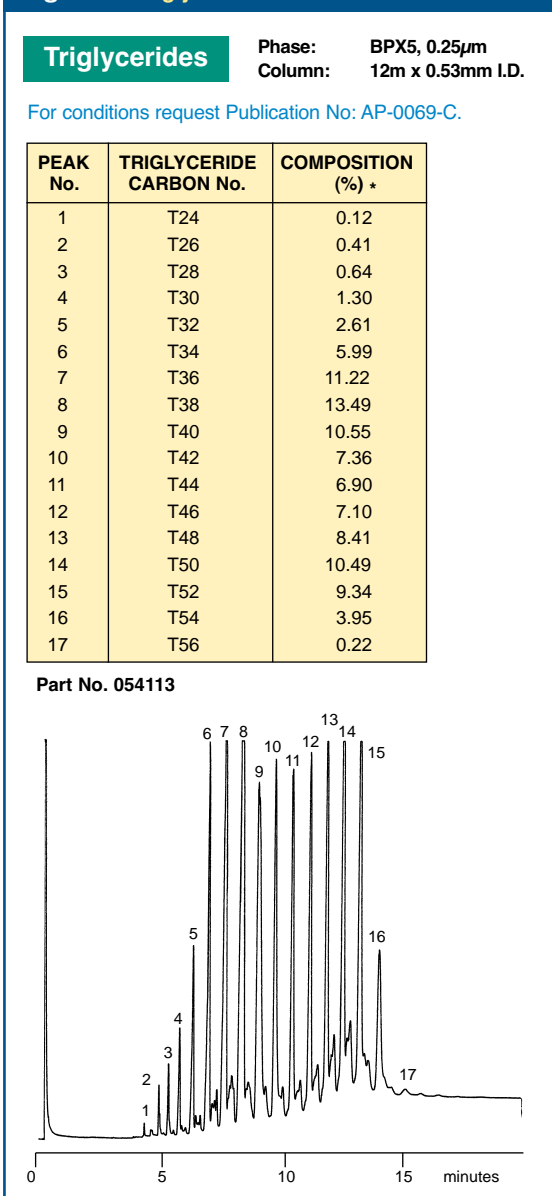
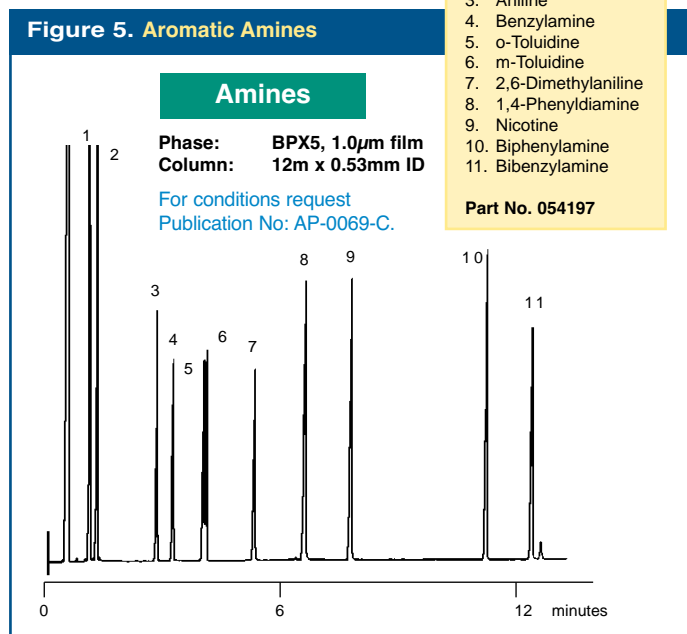
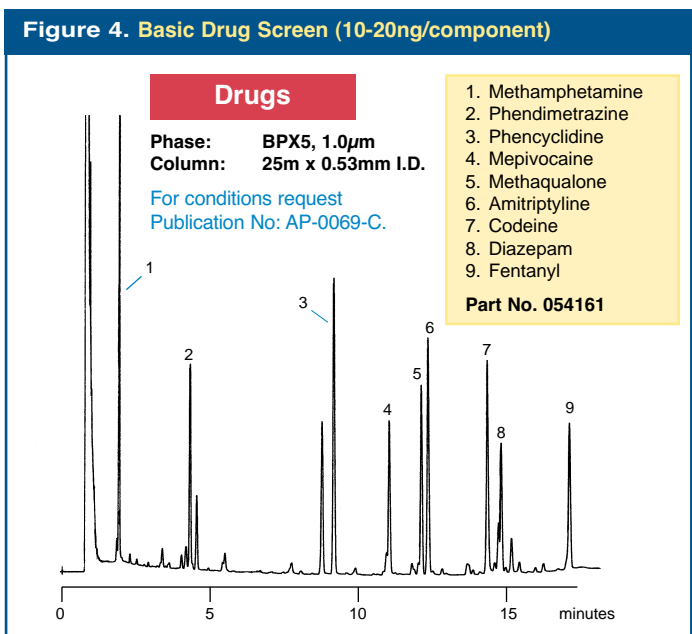
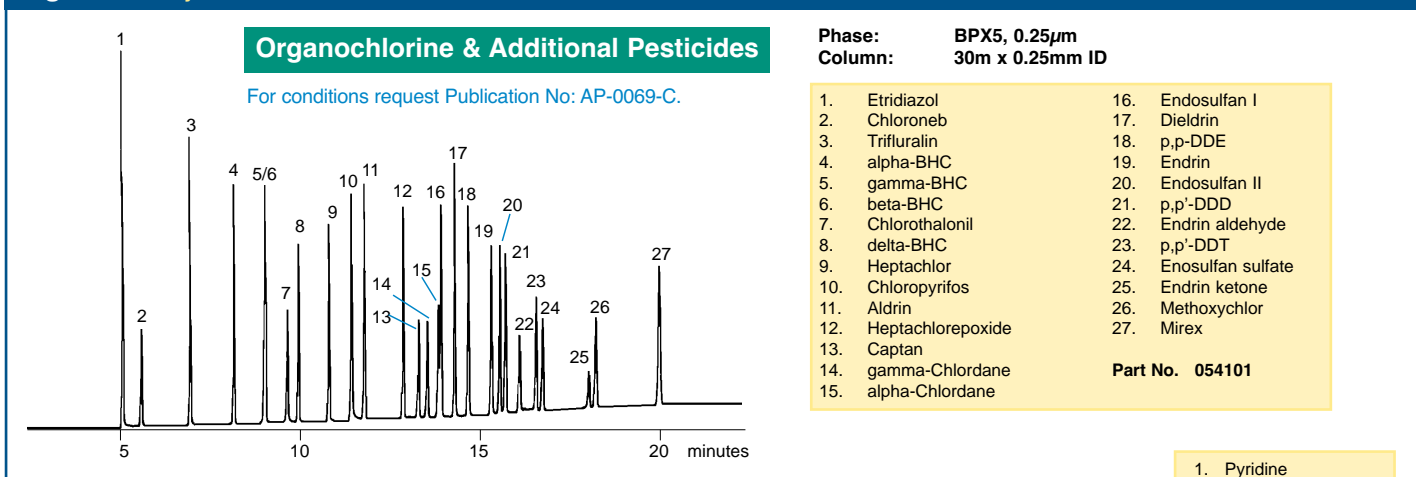


Figure 3. Analysis of EPA method 608 and additional Pesticides



BPX5 CAPILLARY COLUMNS ORDERING INFORMATION

Description	Part No.	Description	Part No.
10m x 0.1mm ID - BPX5, 0.1 μ m	054099	60m x 0.22mm ID - BPX5, 0.25 μ m	054143
30m x 0.25mm ID - BPX5, 0.25 μ m	054101	15m x 0.32mm ID - BPX5, 0.25 μ m	054144
60m x 0.25mm ID - BPX5, 0.25 μ m	054102	30m x 0.32mm ID - BPX5, 0.25 μ m	054145
30m x 0.25mm ID - BPX5, 0.5 μ m	0541025	60m x 0.32mm ID - BPX5, 0.25 μ m	054146
50m x 0.15mm ID - BPX5, 0.25 μ m	054105	15m x 0.53mm ID - BPX5, 1 μ m	054147
30m x 0.32mm ID - BPX5, 0.5 μ m	0541205	30m x 0.53mm ID - BPX5, 1 μ m	054148
15m x 0.25mm ID - BPX5, 1 μ m	054121	15m x 0.32mm ID - BPX5, 1 μ m	054152
30m x 0.25mm ID - BPX5, 1 μ m	054122	30m x 0.32mm ID - BPX5, 1 μ m	054153
60m x 0.25mm ID - BPX5, 1 μ m	054123	60m x 0.32mm ID - BPX5, 1 μ m	054154
30m x 0.53mm ID - BPX5, 0.5 μ m	0541345	60m x 0.53mm ID - BPX5, 1 μ m	054158
15m X 0.53mm ID - BPX5, 1.5 μ m	0541347	15m x 0.53mm ID - BPX5, 3 μ m	054159
30m x 0.53mm ID - BPX5, 1.5 μ m	0541348	30m x 0.53mm ID - BPX5, 3 μ m	054160
15m x 0.22mm ID - BPX5, 0.25 μ m	054141	60m x 0.53mm ID - BPX5, 3 μ m	054164
30m x 0.22mm ID - BPX5, 0.25 μ m	054142		

For the complete list of BPX5 columns request AP-0069-C