

GLASS LINED TUBING (GLT™)

Combining strength and inertness

What is GLT?

GLT (Glass Lined Tubing) was invented and patented by SGE to address the problem of achieving a completely inert chromatographic system. It is made by fusing an borosilicate glass lining onto the inside surface of stainless steel tubing. GLT can either be used as straight tubing or it can be machined or shaped into virtually any chromatography accessory. The options are limitless.

UNIQUE ADVANTAGES

GLT IS INERT

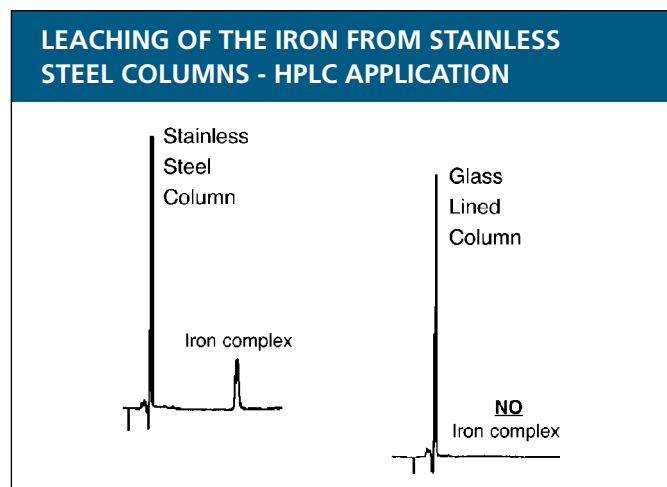
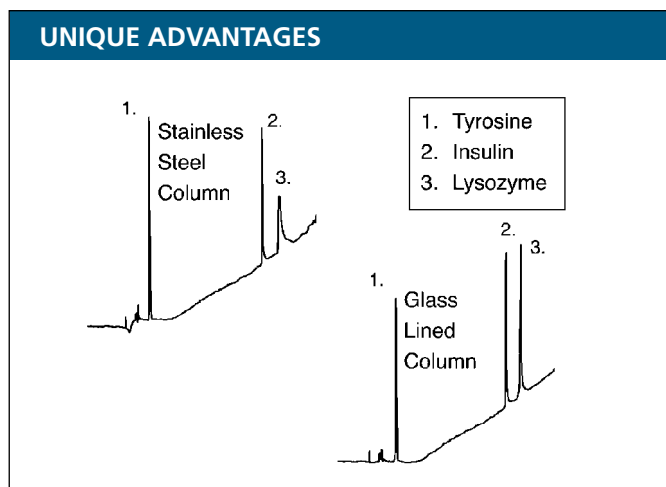
- Excellent resistance to strong acids and bases unlike inferior silica coated brands
- Biocompatible making it ideal for many HPLC applications
- Mirror surface finish allows high HPLC column efficiencies

GLT IS STABLE

- Withstands high temperatures to about 500°C
- The higher expansion coefficient of the steel relative to the glass secures the glass to the steel wall



GLT™ HPLC Column



GLT IS VERSATILE

- GLT can be formed into a multitude of shapes and can also be joined by welding or silver soldering

APPLICATIONS

GLT can be used for:

- reactor tubing
- transfer lines or flow lines
- stack probes for environmental monitoring
- HPLC columns for protein and biosensitive analyses
- mass spectrometer interfaces
- thermal desorption tubes
- inert tee pieces and unions

ORDERING INFORMATION

1/2" OD GLT™

ID	30cm	60cm	90cm	180cm
9.5mm	-	08277028	-	-

1/4" OD GLT™

ID	30cm	60cm	90cm	180cm
2.0mm	-	-	082760	-
4.0mm	082767	082768	082769	082770

1/6" OD GLT™

ID	30cm	60cm	90cm	180cm
3.0mm	082707	082708	082709	082710
4.0mm	082712	-	-	-
5.0mm	082717	082718	082719	082720
7.0mm	082722	082723	082724	082725
8.0mm	0827352	0827353	0827354	0827355

GLT RANGE

- Tubing comes in a wide range of sizes with ODs of 1/16", 1/8", 1/4", 1/2" and IDs between 0.3-9.5mm
- GLT can be machined to form unions fittings and a range of other chromatography accessories

GLT CUSTOM DESIGN SERVICE AND OEM CONFIGURATIONS

There is no limit to the range of applications GLT can service. Contact SGE for a complete custom made solution to your flow, transfer and system operation problems.

1/8" OD GLT™

ID	30cm	60cm	90cm	180cm
0.5mm	0827375	0827376	0827377	-
0.75mm	082732	082733	082734	082735
1.0mm	082737	082738	082739	082740
1.5mm	082742	082743	082744	082745
1.8.0mm	082747	-	-	082750

GLT is also available in chromatographic accessories and components. For further details contact your nearest SGE office or visit our web site.

AUSTRALIA & PACIFIC REGION

SGE Analytical Science Pty Ltd
Tel: +61 (0) 3 9837 4200
Fax: +61 (0) 3 9874 5672
Email: support@sge.com

CHINA

SGE Shanghai Representative Office
Tel: +86 21 6407 9382
Fax: +86 21 6407 9386
Email: china@sge.com

FRANCE

SGE Europe Ltd
Tel: +33 1 69 29 80 90
Fax: +33 1 69 29 09 25
Email: europe@sge.com

GERMANY

SGE GmbH
Tel: +49 (0) 6155 / 60746 0
Fax: +49 (0) 6155 / 60746 50
Email: europe@sge.com

INDIA

SGE Laboratory Accessories Pvt Ltd
Tel: +91 22 24715896
Fax: +91 22 24716592
Email: sgeindia@vsnl.com

JAPAN

SGE Japan Inc
Tel: +81 45 222 2885
Fax: +81 45 222 2887
Email: japan@sge.com

MIDDLE EAST

SGE Gulf
Tel: 00 971 6 557 3341
Fax: 00 971 6 557 3541
Email: gulfsupport@sge.com

UNITED KINGDOM

SGE Europe Ltd
Tel: +44 1908 568 844
Fax: +44 1908 566 790
Email: europe@sge.com

UNITED STATES OF AMERICA

SGE Incorporated
Tel: +1 512 837 7190
Fax: +1 512 836 9159
Email: usa@sge.com