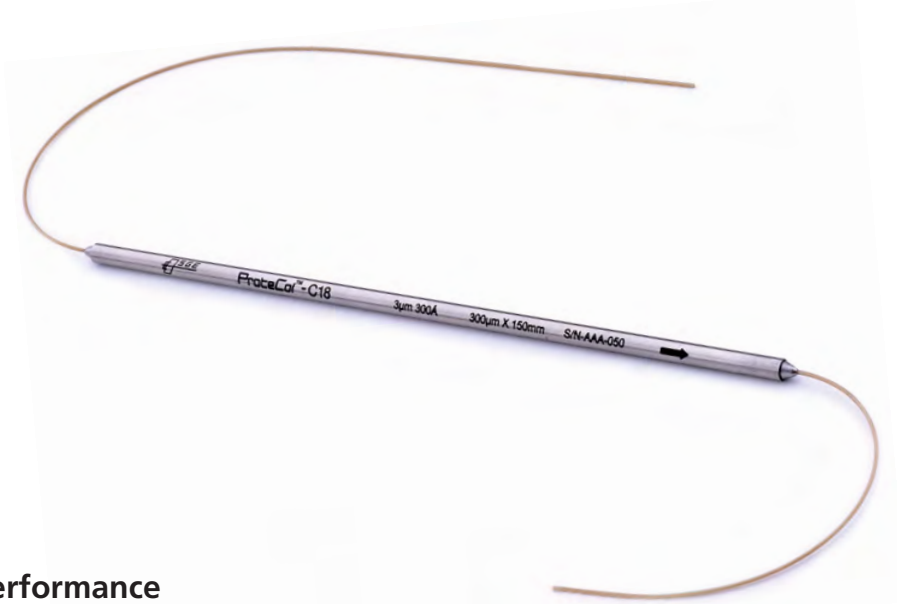


ProteCol™ Capillary Columns

PRODUCT DATA



Maximum Performance

- Integrated column and connection tubing design
- PEEKsil™ column and connecting tubing for an inert smooth flow path
- Zero dead volume gives excellent peak symmetry and efficiencies

The central part of any separation system is the column. ProteCol Columns are designed with special regards to the needs of Capillary LC.

ProteCol Capillary Columns are designed so that the column body, column closure (screen), endfitting, and the connecting tubing are all integrated into a single sealed unit. This design eliminates dead volume and achieves optimal flow characteristics, thus minimizing dispersion.

The column body and connection tubing “tails” are made from PEEKsil tubing (fused silica lined PEEK™). The fused silica provides an inert smooth flow path, and the PEEK outer shell gives a flexible robust construction.

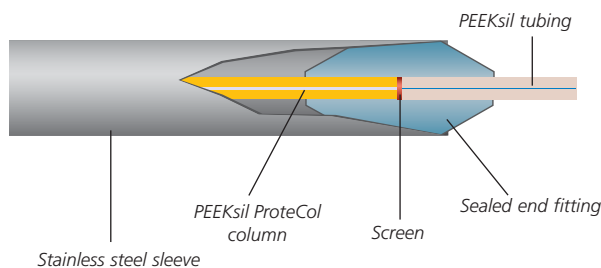


Figure 1. Integrated fused silica lined PEEK (PEEKsil) tubing column design.

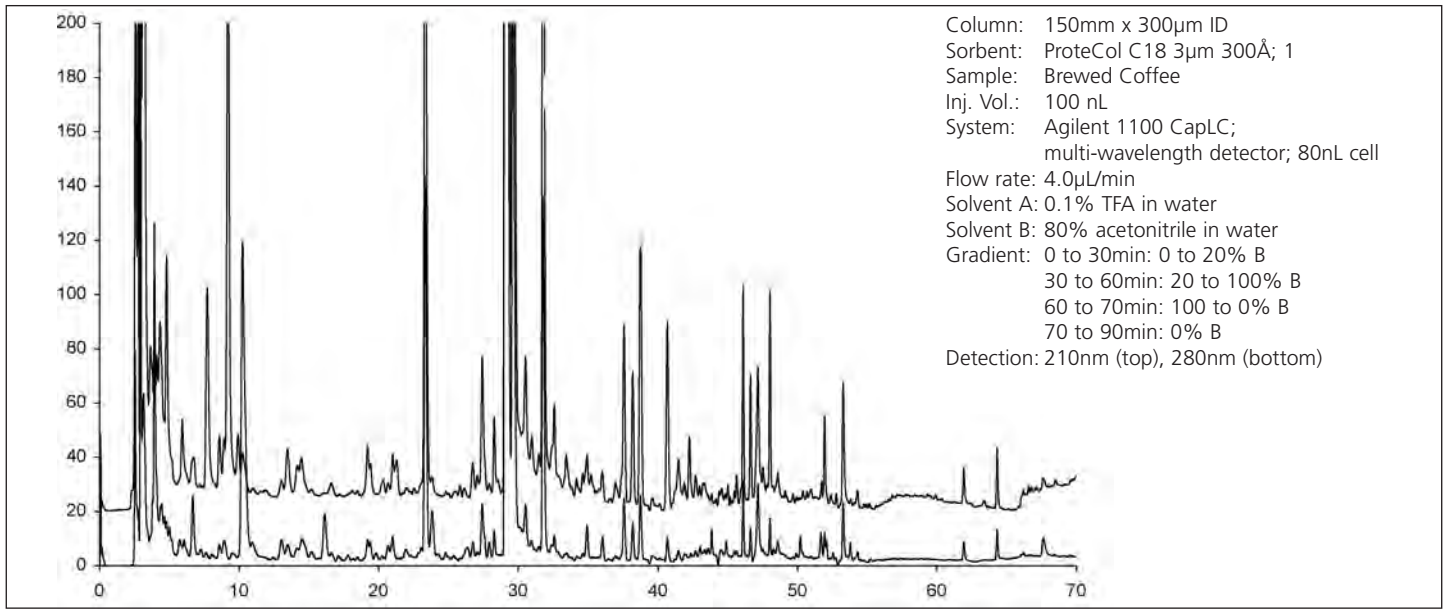
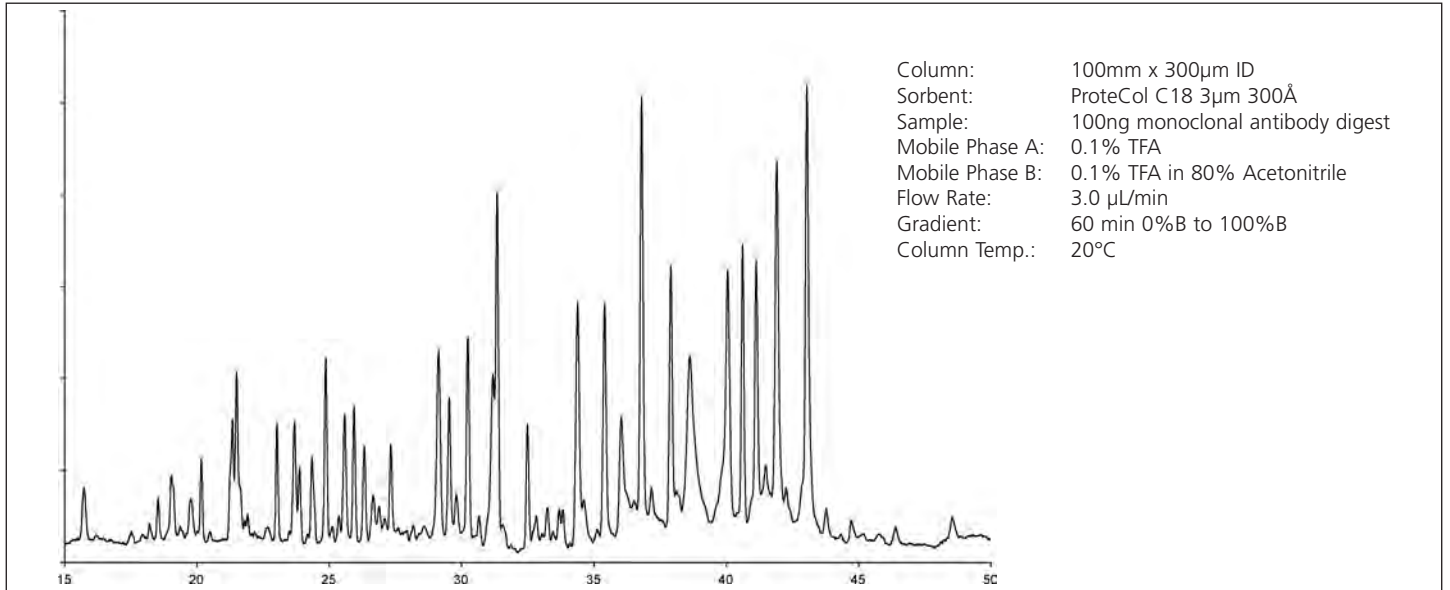
Columns are available with both 1/16” and 1/32” OD tails, providing versatility in connectivity and flexibility. The ends of the tails are precisely square cut and polished to achieve zero dead volume connections.

All column tails are narrow bore (typically 50 or 25µm) to minimize tubing volume and dispersion. Post column dispersion is further reduced by decreasing the length of the outlet tail (typically 100mm). This is particularly important when using gradients.

Ideal for applications in Proteomics and Drug Discovery, ProteCol Capillary column are available in a range of lengths, ID’s and packings.

The most commonly used packing material is C18 modified silica, 3µm particles, which offers a high resolution while allowing the use of shorter columns. Typical pore sizes are 120Å for small

molecules (pharmaceutical drugs and small peptides) and 300Å for larger molecules (large peptides and small proteins). Separations using these packings are shown below.



For a full listing of all ProteCol products, specifications and part numbers, please see the ProteCol Ordering Information data sheet.

To talk with a technical expert, email support@sge.com.

View the ProteCol Capillary Column specifications and purchase online.

SGE International Pty. Ltd.
 Toll Free: 1800 800 167
 Tel: +61 (0) 3 9837 4200
 Fax: +61 (0) 3 9874 5672
 email: support@sge.com

SGE Incorporated (USA)
 Toll Free: 800 945 6154
 Tel: +1 512 837 7190
 Fax: +1 512 836 9159
 email: usa@sge.com

SGE China Service Centre
 Tel: +86 (10) 6588 8666
 Fax: +86 (10) 6588 6577

Patent Pending

SGE Europe Ltd. (UK)
 Tel: +44 (0) 1908 568 844
 Fax: +44 (0) 1908 566 790
 email: uk@sge.com

SGE Deutschland GmbH
 Tel: +49 (0) 6151 860486
 Fax: +49 (0) 6151 860489
 email: germany@sge.com

SGE Japan Inc.
 Tel: +81 (45) 222 2885
 Fax: +81 (45) 222 2887
 email: japan@sge.com

SGE Europe Ltd. (France)
 Tel: +33 (0) 1 6929 8090
 Fax: +33 (0) 1 6929 0925
 email: france@sge.com

SGE (Italia) Srl.
 Tel: +39 06 4429 0206
 Fax: +39 06 4429 0724
 email: sge.italia@tin.it

SGE India
 Tel: +91 (022) 471 5896
 Fax: +91 (022) 471 6592
 email: sgeindia@vsnl.com



www.sge.com

©Copyright SGE International Pty. Ltd.
 All rights reserved. PD-0243-H Rev 02 05/04