

# ProteCol™

## In-Line Filters



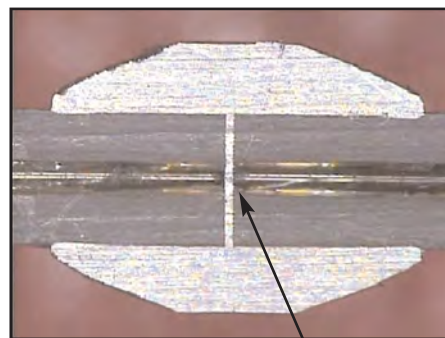
### Particulate protection for your columns

- Zero dead volume filter design
- Zero pressure drop across filter
- Zero compromise on performance

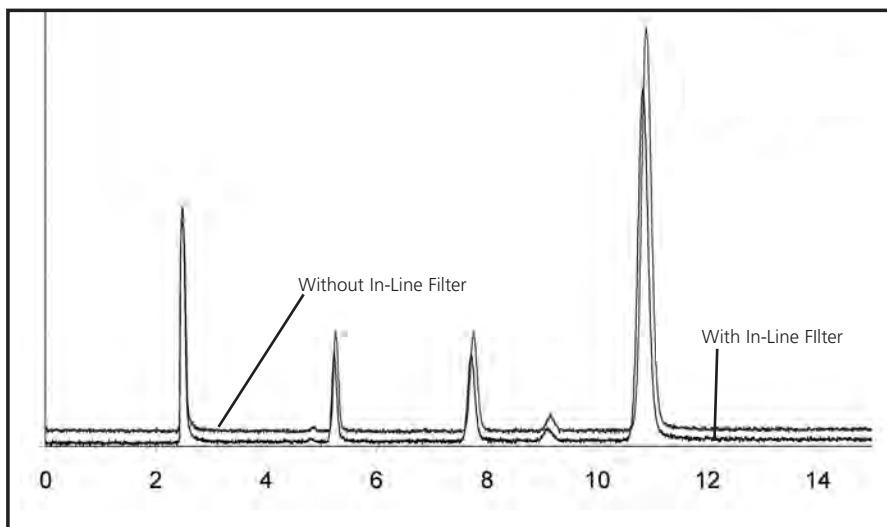
The ProteCol In-Line Filter is a simple and effective way to protect your capillary columns from particulates. It protects your system from blockages and increased back pressures without introducing peak tailing or loss of resolution.

The filtering element itself is a 2 micron porosity screen, located between the square-cut and polished ends of two lengths of PEEKsil™ tubing ("tails"). The construction of the in-line filter minimizes dead volume, providing optimum column performance.

In-line filters are available with both 1/16" and 1/32" O.D. PEEKsil tails, providing versatility in connectivity and flexibility. The ends of the tails are precisely square cut and polished to achieve zero dead volume connections using ProteCol Unions.

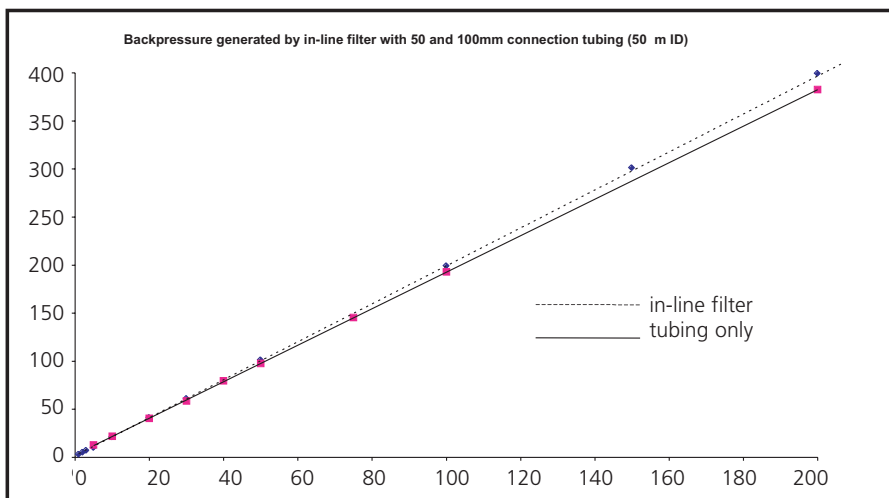


2 micron screen



Column: 300 $\mu$ m x 150mm  
 ProteCol C18, 3 $\mu$ m, 120 $\text{\AA}$   
 60% AcCN : 40% water  
 4.2 $\mu$ L/min  
 Test Mix:  
 Pyridine  
 Methyl Benzoate  
 Phenetole  
 Naphthalene

**Figure 1.**  
 Chromatograms run with and without the in-line filter, showing no effect on resolution.



**Figure 2.**  
 Comparison of back pressure of in-line filter compared to same length of PEEKsil tubing - demonstrating there is negligible back pressure contribution from the filter element.

For a full listing of all ProteCol products, specifications and part numbers, please see the ProteCol Ordering Information data sheet.

To talk with a technical expert, email [support@sge.com](mailto:support@sge.com).

View the ProteCol Inline Filter specifications and purchase online.

SGE International Pty. Ltd.  
 Toll Free: 1800 800 167  
 Tel: +61 (0) 3 9837 4200  
 Fax: +61 (0) 3 9874 5672  
 email: [support@sge.com](mailto:support@sge.com)

SGE Incorporated (USA)  
 Toll Free: 800 945 6154  
 Tel: +1 512 837 7190  
 Fax: +1 512 836 9159  
 email: [usa@sge.com](mailto:usa@sge.com)

SGE China Service Centre  
 Tel: +86 (10) 6588 8666  
 Fax: +86 (10) 6588 6577

SGE Europe Ltd. (UK)  
 Tel: +44 (0) 1908 568 844  
 Fax: +44 (0) 1908 566 790  
 email: [uk@sge.com](mailto:uk@sge.com)

SGE Deutschland GmbH  
 Tel: +49 (0) 6151 860486  
 Fax: +49 (0) 6151 860489  
 email: [germany@sge.com](mailto:germany@sge.com)

SGE Japan Inc.  
 Tel: +81 (45) 222 2885  
 Fax: +81 (45) 222 2887  
 email: [japan@sge.com](mailto:japan@sge.com)

\* Patent Pending

SGE Europe Ltd. (France)  
 Tel: +33 (0) 1 6929 8090  
 Fax: +33 (0) 1 6929 0925  
 email: [france@sge.com](mailto:france@sge.com)

SGE (Italia) Srl.  
 Tel: +39 06 4429 0206  
 Fax: +39 06 4429 0724  
 email: [sge.italia@tin.it](mailto:sge.italia@tin.it)

SGE India  
 Tel: +91 (022) 471 5896  
 Fax: +91 (022) 471 6592  
 email: [sgeindia@vsnl.com](mailto:sgeindia@vsnl.com)



[www.sge.com](http://www.sge.com)

©Copyright SGE International Pty. Ltd.  
 All rights reserved. PD-0240-H Rev 02 05/04