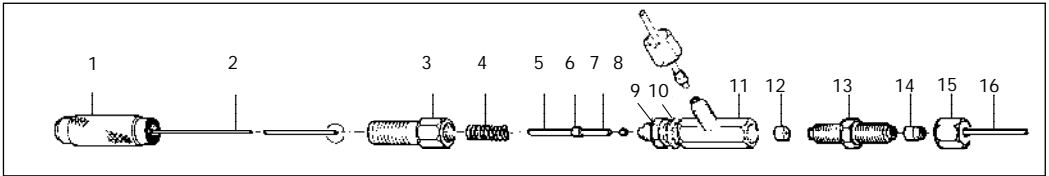




BMCV-1

Micro Control Valve



Important

Turn off all flows before installing the valve or when replacing parts.

The BMCV-1 is designed to accept 1/16" O.D. flow lines and the base connecting line (16) must be over 0.5mm ID

PART NO. 1236282

Vespel Seat (12) Replacement

Remove 1/16" line and disconnect double ended union (13) then fully tighten knob (1) onto assembly (3). This action pushes the Vespel seal from a support shoulder inside the valve body (11).

To protect needle, unwind the control knob (1) to the extremity of thread on the assembly (3).

The valve seat (12) should then dislodge from the valve body (11). If not remove assembly (3) from body (11) and dislodge seat using seal-seat remover (wire). Insert wire through male threaded section of body (11) to dislodge seat.

To fit seat reconnect assembly (3) on valve body (11) and wind control knob (1) down so that needle (2) protrudes beyond the end of the valve body. Then place seat (12) on needle (2). Invert valve and again unwind control knob about five turns to allow seat to fall into position. Reconnect double ended union (13) and firmly tighten.

* Install PSR/16 (14), connect 1/16" line (16) and screw on nut (15).

* Finer Control

To obtain finer control at low flows (10-15 mls/min.) the following procedure is necessary:

(i) Connect a test gas at, say 2 atmospheres (30 psi) to side arm.

(ii) Screw down control knob to shut-off point then open one half of one turn. If a flow is detected tighten the union (13) further until flow stops.

PTFE Seal (8) Replacement

Two spare seals are provided in the unlikely event replacement is required. The seal is simply a small PTFE tube 1.6mm OD x 1mm ID x 2mm long and is located inside the valve body (11). The method for replacement is as follows: Unwind the control knob (1) to the extremity of thread on assembly (3). Unscrew assembly (3) and withdraw thrust tube (5) and compression spring (4). Remove seal (8) with wire tool provided. Place new seal into

Packing List for BMCV-1

1236282	BMCV-1 Valve	1
072650	PSR/16 1/16" PTFE Sealing Rings	5
123687	PTFE Seals	2
1236101	Seal-seat remover tool	1
123681	VSV-6 Valve Seat	1

top of male thread and push into place with thrust tube (7).

The shorter length beneath the stop (6) on the thrust tube should be pushed into the valve body and when the thrust touches the seal the stop should be a nominal 2mm above the face of the male thread.

Place compression spring (4) onto other exposed (longer) end (5) of the thrust tube. Thread needle (2) into thrust tube and tighten assembly (3). Reset control Knob.

Publication No. MN-0046-A Rev 03 06/01

SGE International Pty. Ltd.

Toll Free: 1800 800 167
Tel: +61 (0) 3 9837 4200
Fax: +61 (0) 3 9874 5672
e-mail: support@sge.com

SGE, Incorporated (USA)

Toll Free: (800) 945 6154
Tel: (512) 836 9159
Fax: (512) 836 9159
e-mail: usa@sge.com

SGE Europe Ltd. (UK)

Tel: +44 (0) 1908 568 844
Fax: +44(0) 1908 566 790
e-mail: uk@sge.com

SGE (France) Sarl

Tel: +33 (0) 1 69 29 80 90
Fax: +33 (0) 1 69 29 09 25
e-mail: france@sge.com

SGE Italia Srl.

Tel: (06) 44290206
Fax: (06) 44290724
e-mail: sge.italia@tin.it

SGE Deutschland GmbH

Tel: +49 (0) 6151 860486
Fax: +49 (0) 6151 860489
e-mail: germany@sge.com

SGE China

Tel: +86 (10) 6588 8666
Fax: +86 (10) 6588 6577

SGE Japan Inc.

Tel: +81 45 222 2885
Fax: +81 45 222 2887
e-mail: japan@sge.com

SGE India

Tel: +91 (022) 471 5896
Fax: +91 (022) 471 6592
e-mail: sgeindia@vsnl.com

