

# ProteCol™ Capillary LC Columns

## Environmental Samples- Analysis of Polyaromatic Hydrocarbons (PAH)

Environmental assays typically require maximum sensitivity and involve very low sample concentrations, which makes them ideal for investigation with small diameter HPLC columns. Figure 1 shows the analysis of 16 polyaromatic hydrocarbons by a LC-UV technique using a

ProteCol C18 120 Å 3µm capillary column, 150mm x 300µm ID. While UV detectors are still popular for environmental pollutants, other detectors such as fluorescence, electrochemical and mass spectrometry are also used due to their selectivity and high sensitivity.

### ProteCol part numbers used:

Column P/N 2102352  
Tubing P/N 212012  
Unions/ferrule P/N 212006

### Other ProteCol accessories:

MicroFlow Meter P/N 222013

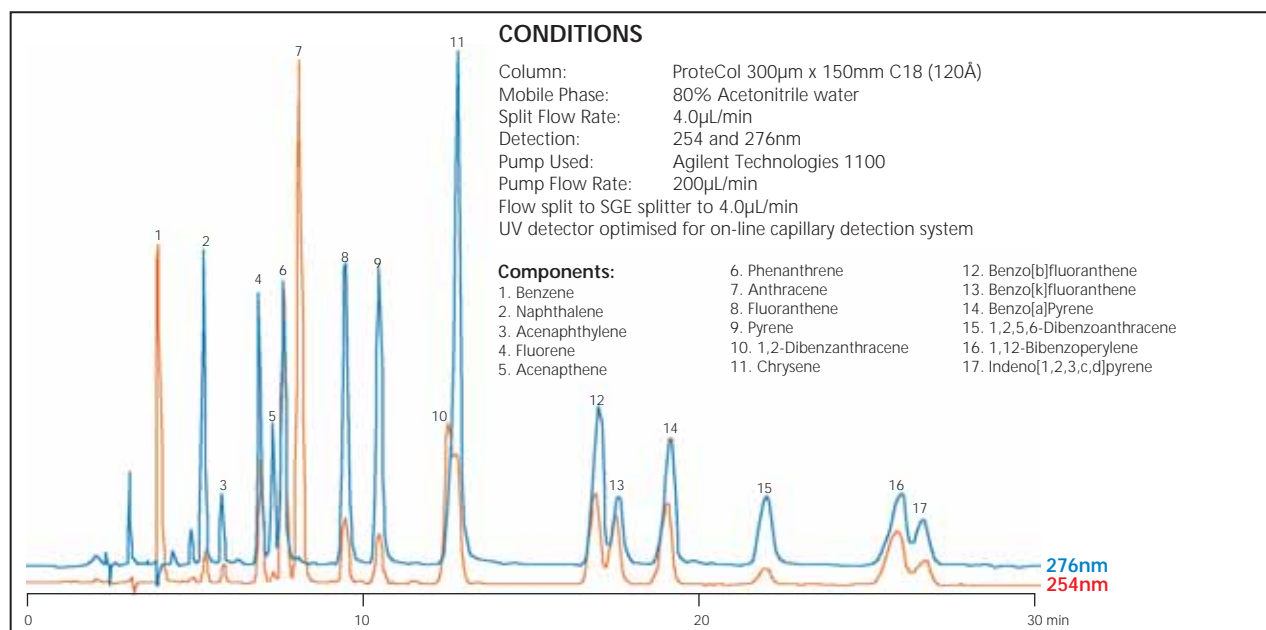


Figure 1 - Separation of PAHs (EPA 610 mix) under isocratic conditions.

For a full listing of all ProteCol products, specifications and part numbers, please see the ProteCol Ordering Information data sheet.

To talk with a technical expert, email [support@sge.com](mailto:support@sge.com).

SGE International Pty. Ltd.  
Toll Free: 1800 800 167  
Tel: +61 (0) 3 9837 4200  
Fax: +61 (0) 3 9874 5672  
email: [support@sge.com](mailto:support@sge.com)

SGE Europe Ltd. (UK)  
Tel: +44 (0) 1908 568 844  
Fax: +44 (0) 1908 566 790  
email: [uk@sge.com](mailto:uk@sge.com)

SGE Europe Ltd. (France)  
Tel: +33 (0) 1 6929 8090  
Fax: +33 (0) 1 6929 0925  
email: [france@sge.com](mailto:france@sge.com)

SGE Incorporated (USA)  
Toll Free: 800 945 6154  
Tel: +1 512 837 7190  
Fax: +1 512 836 9159  
email: [usa@sge.com](mailto:usa@sge.com)

SGE Deutschland GmbH  
Tel: +49 (0) 6151 860486  
Fax: +49 (0) 6151 860489  
email: [germany@sge.com](mailto:germany@sge.com)

SGE (Italia) Srl.  
Tel: +39 06 4429 0206  
Fax: +39 06 4429 0724  
email: [sge.italia@tin.it](mailto:sge.italia@tin.it)

SGE China Service Centre  
Tel: +86 (10) 6588 8666  
Fax: +86 (10) 6588 6577

SGE Japan Inc.  
Tel: +81 (45) 222 2885  
Fax: +81 (45) 222 2887  
email: [japan@sge.com](mailto:japan@sge.com)

SGE India  
Tel: +91 (022) 471 5896  
Fax: +91 (022) 471 6592  
email: [sgeindia@vsnl.com](mailto:sgeindia@vsnl.com)

Patent Pending