

LC-PRO 19

Proteins/Peptides/Nucleotides

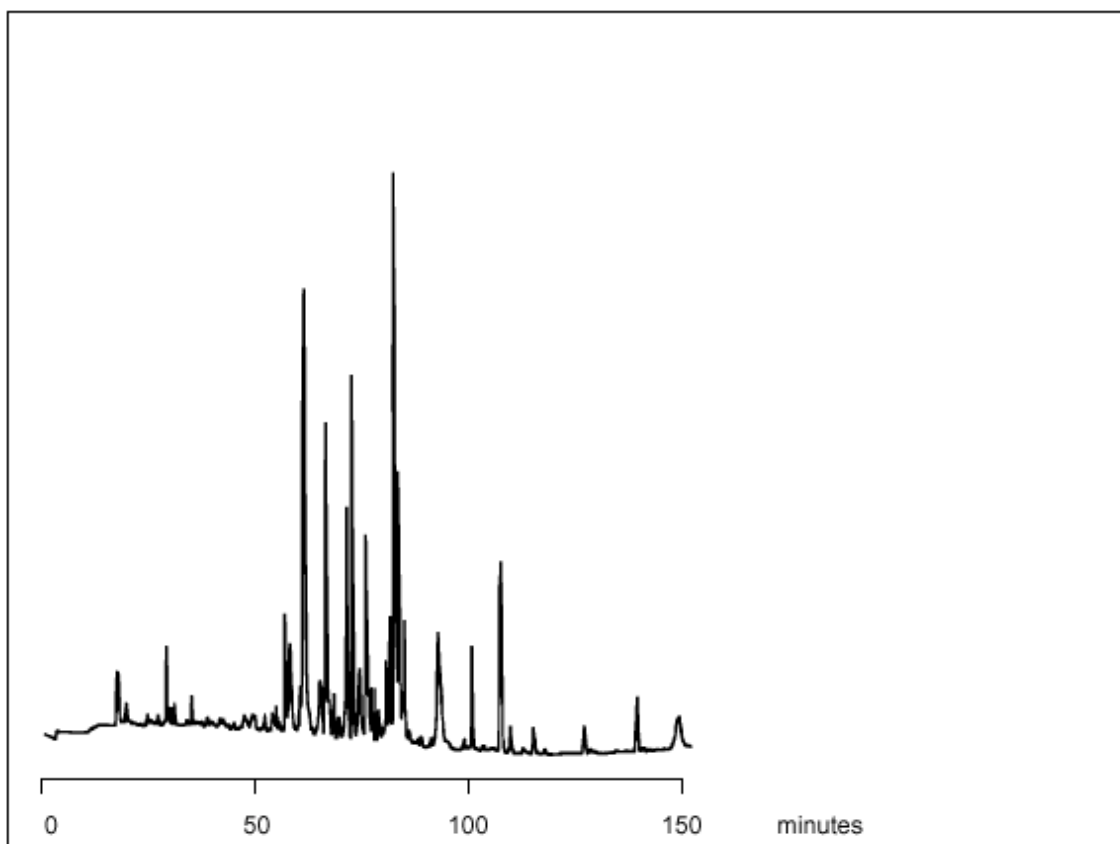
Lys-C Digest on Nucleosil ODS microcolumn

Keywords: Microcolumn

Part No.: 207038
Packing: Nucleosil ODS, 300Å
Column: 250mm x 1.0mm
Mobile Phase A: 0.1% Trifluoroacetic Acid in Water
Mobile Phase B: 0.1% Trifluoroacetic Acid in 80% Acetonitrile
Gradient: 100% A to 20% A in 160mins
Flow: 40µL/min
Pressure: 1200psi
Temperature: Ambient
Detector: UV at 214

Components

Lys-C Digest of the beta subunit of the AMP-activated protein



visit www.sge.com or contact our technical Customer Support Team on: techsupport@sge.com

SGE International Pty. Ltd.
email: support@sge.com

SGE Incorporated (USA)
email: usa@sge.com

SGE (France) Sarl
email: france@sge.com

SGE Deutschland GmbH
email: germany@sge.com

SGE Japan Inc.
email: sgejpn@itjit.ne.jp

SGE Australia Pty. Ltd.
email: sales@sge.com

SGE Europe Ltd. (UK)
email: uk@sge.com

SGE (Italia) Srl.
email: sge.italia@tin.it

SGE China Service Centre
email: sge@bj.col.com.cn

SGE India
email: sgeindia@bom4.vsnl.net.in