

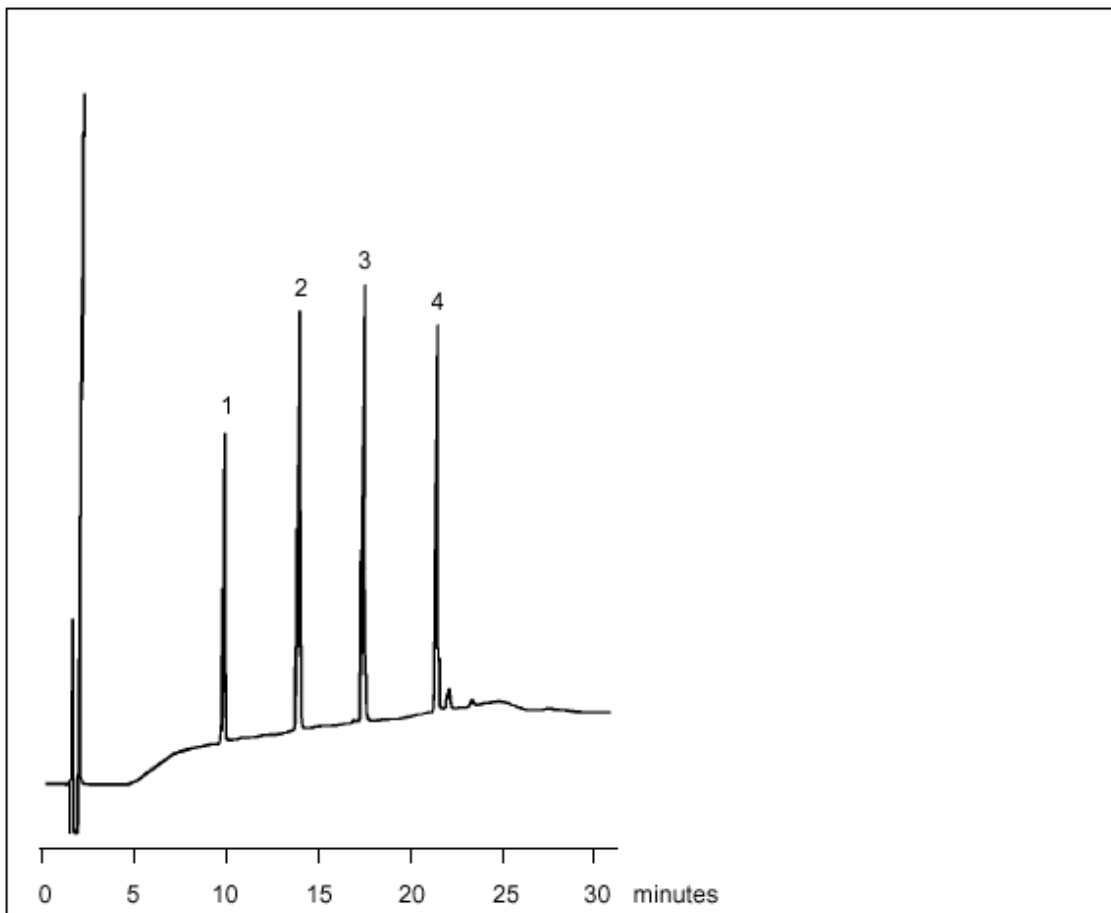
LC-PRO 05

Enkephalins on W5C18 AR

Proteins/Peptides/Nucleotides

Part No.: 2066050
Packing: Wakosil-II 5C18 AR
Column: 150mm x 4.6mm
Mobile Phase A: 0.1% Trifluoroacetic Acid in Water
Mobile Phase B: 50% 0.1% Trifluoroacetic Acid in Water, 50% Acetonitrile
Gradient: 80% A to 40% A in 20mins
Flow: 1.0mL/min
Temperature: 40°C
Detector: UV at 215nm

Components
1. Arg-Vasopressin
2. Met-Enkephalin
3. Leu-Enkephalin
4. Substance P



visit www.sge.com or contact our technical Customer Support Team on: techsupport@sge.com

SGE International Pty. Ltd.
email: support@sge.com

SGE Incorporated (USA)
email: usa@sge.com

SGE (France) Sarl
email: france@sge.com

SGE Deutschland GmbH
email: germany@sge.com

SGE Japan Inc.
email: sgejpn@itjit.ne.jp

SGE Australia Pty. Ltd.
email: sales@sge.com

SGE Europe Ltd. (UK)
email: uk@sge.com

SGE (Italia) Srl.
email: sge.italia@tin.it

SGE China Service Centre
email: sge@bj.col.com.cn

SGE India
email: sgeindia@bom4.vsnl.net.in