

# HPLC ANALYTICAL SOLUTIONS



**LC-PRO 04**

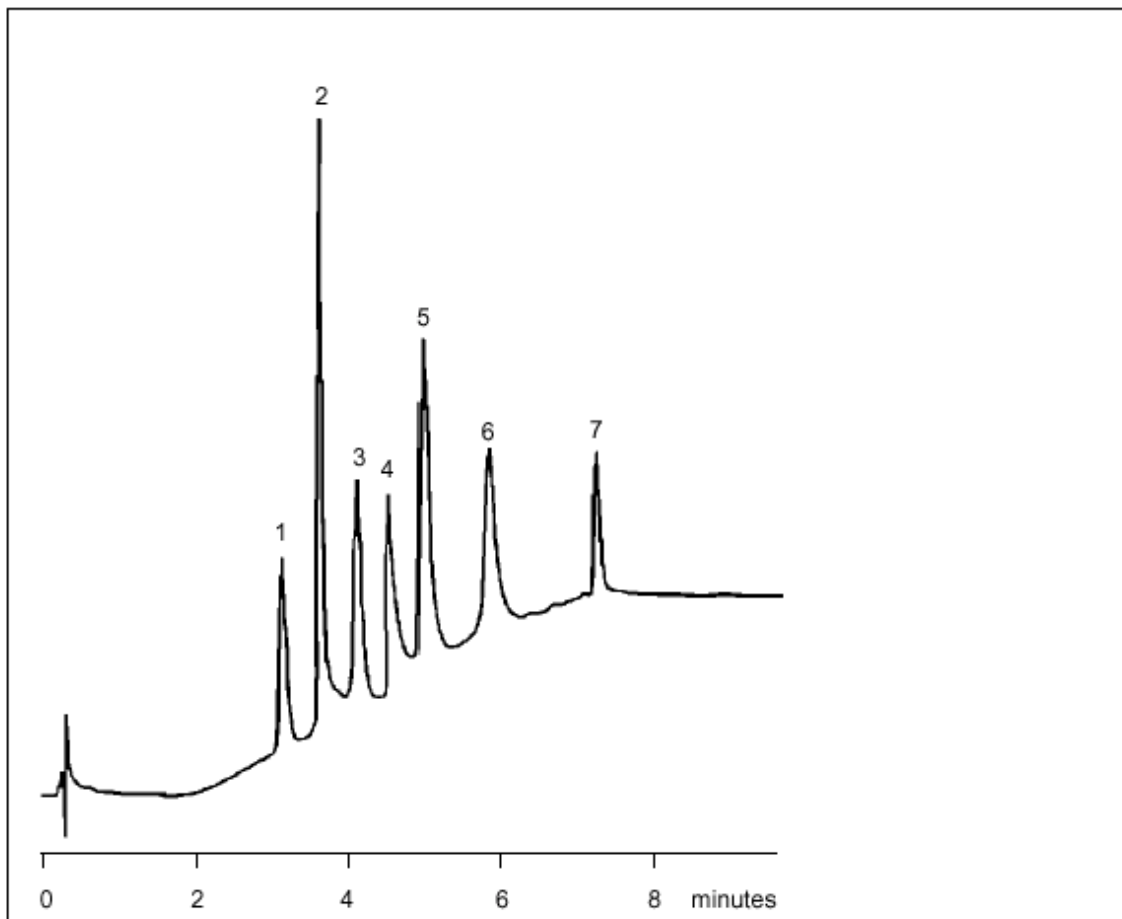
**Proteins and Peptides on W5C18 AR**

**Proteins/Peptides/Nucleotides**

**Part No.:** 2066050  
**Packing:** Wakosil-II 5C18 AR  
**Column:** 150mm x 4.6mm  
**Mobile Phase A:** 80% 0.1% Trifluoroacetic Acid in Water, 20% Acetonitrile  
**Mobile Phase B:** 40% 0.1% Trifluoroacetic Acid in Water, 60% Acetonitrile  
**Gradient:** 100% A to 100% B in 5mins  
**Flow:** 2.0mL/min  
**Temperature:** Ambient  
**Detector:** UV at 220nm

**Components**

1. Ribonuclease
2. Insulin
3. Lysozyme
4. BSA
5. Myoglobin
6. Ovalbumin
7. Unknown



visit [www.sge.com](http://www.sge.com) or contact our technical Customer Support Team on: [techsupport@sge.com](mailto:techsupport@sge.com)

SGE International Pty. Ltd.  
email: support@sge.com

SGE Incorporated (USA)  
email: usa@sge.com

SGE (France) Sarl  
email: france@sge.com

SGE Deutschland GmbH  
email: germany@sge.com

SGE Japan Inc.  
email: sgejpn@itjit.ne.jp

SGE Australia Pty. Ltd.  
email: sales@sge.com

SGE Europe Ltd. (UK)  
email: uk@sge.com

SGE (Italia) Srl.  
email: sge.italia@tin.it

SGE China Service Centre  
email: sge@bj.col.com.cn

SGE India  
email: sgeindia@bom4.vsnl.net.in