

## LC-PHA 27

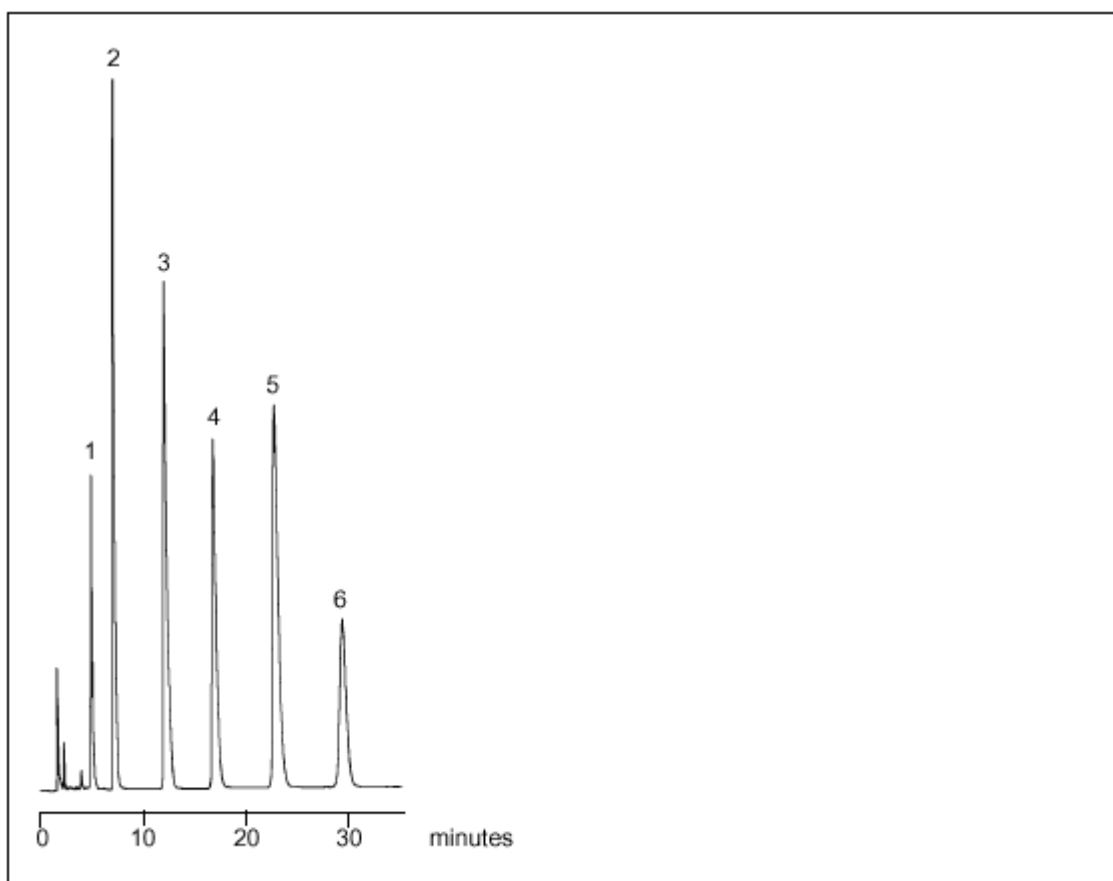
## Tricyclic Antidepressants on W5C8 RS

Pharmaceuticals/Drugs/Biomedical

**Part No.:** 206610  
**Packing:** Wakosil-II 5C8 RS  
**Column:** 150mm x 4.6mm  
**Mobile Phase:** 62% Methanol, 38% 20mM  
KH<sub>2</sub>PO<sub>4</sub> to pH 6.5  
**Flow:** 1.0mL/min  
**Temperature:** 40°C  
**Detector:** UV at 254nm

### Components

1. Protriptyline Hydrochloride
2. Nortriptyline Hydrochloride
3. Doxepin Hydrochloride
4. Imipramine Hydrochloride
5. Amitriptyline Hydrochloride
6. Trimipramine Maleate



visit [www.sge.com](http://www.sge.com) or contact our technical Customer Support Team on: [techsupport@sge.com](mailto:techsupport@sge.com)

SGE International Pty. Ltd.  
email: support@sge.com

SGE Incorporated (USA)  
email: usa@sge.com

SGE (France) Sarl  
email: france@sge.com

SGE Deutschland GmbH  
email: germany@sge.com

SGE Japan Inc.  
email: sgejpn@itjit.ne.jp

SGE Australia Pty. Ltd.  
email: sales@sge.com

SGE Europe Ltd. (UK)  
email: uk@sge.com

SGE (Italia) Srl.  
email: sge.italia@tin.it

SGE China Service Centre  
email: sge@bj.col.com.cn

SGE India  
email: sgeindia@bom4.vsnl.net.in