

LC-PHA 16

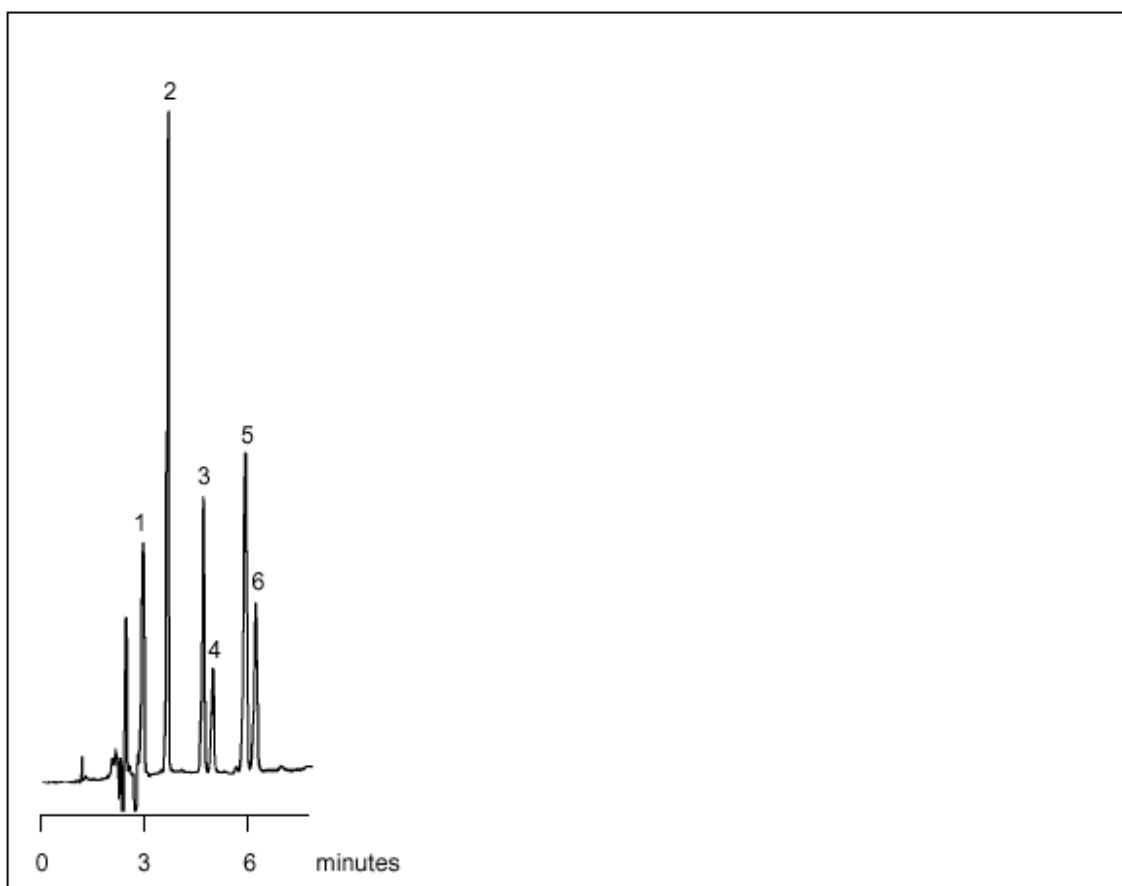
Anticonvulsants on Exsil ODS

Pharmaceuticals/Drugs/Biomedical

Part No.: 207001
Packing: Exsil ODS, 5 micron
Column: 250mm x 4.0mm
Mobile Phase: 70% 0.05M NaH₂PO₄ at pH 4.0, 30% Acetonitrile
Flow: 1.0mL/min
Pressure: 1200psi
Detector: UV at 254nm, 0.2 AUFS

Components

1. Primodone
2. Phenacemide
3. Phenobarbital
4. Barbital
5. Phensuximide
6. Mephenytoin



visit www.sge.com or contact our technical Customer Support Team on: techsupport@sge.com

SGE International Pty. Ltd.
email: support@sge.com

SGE Incorporated (USA)
email: usa@sge.com

SGE (France) Sarl
email: france@sge.com

SGE Deutschland GmbH
email: germany@sge.com

SGE Japan Inc.
email: sgejpn@itjit.ne.jp

SGE Australia Pty. Ltd.
email: sales@sge.com

SGE Europe Ltd. (UK)
email: uk@sge.com

SGE (Italia) Srl.
email: sge.italia@tin.it

SGE China Service Centre
email: sge@bj.col.com.cn

SGE India
email: sgeindia@bom4.vsnl.net.in

