

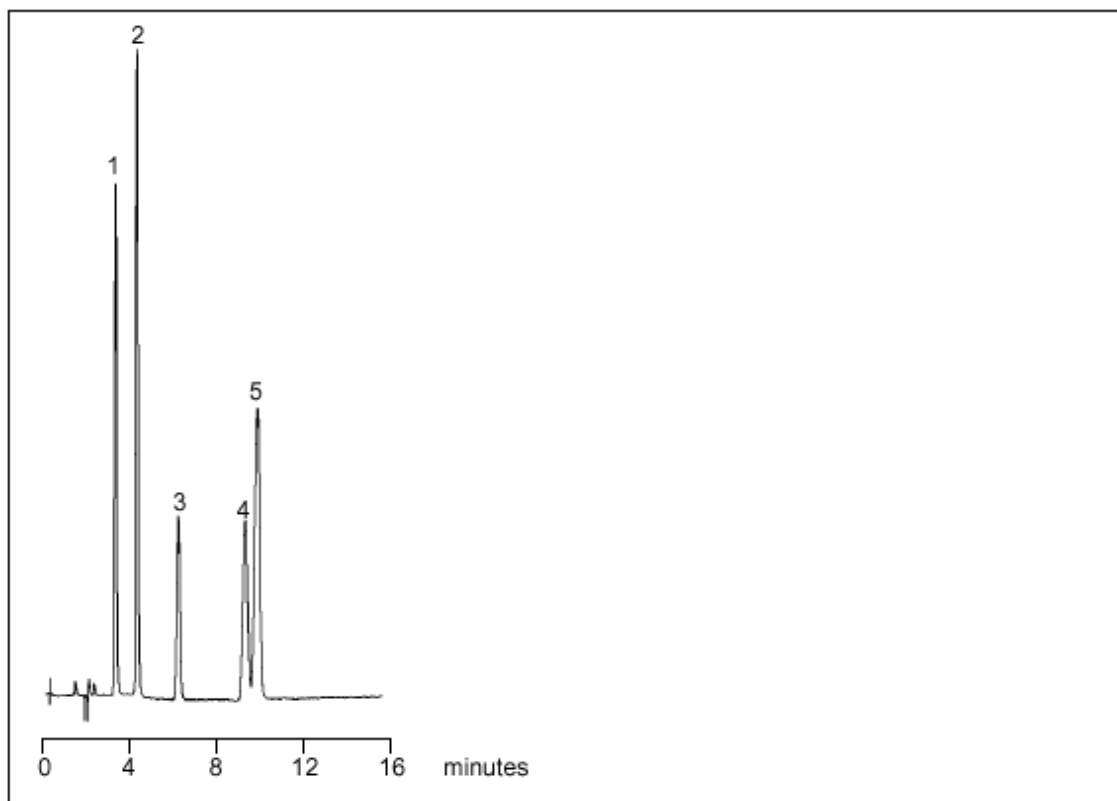
LC-FOO 10
Food & Beverages

Parabens on Exsil ODS

Part No.: 207001
Packing: Exsil ODS, 5 micron
Column: 250mm x 4.0mm
Mobile Phase: 35% Water, 65% Methanol
Flow: 0.9 mL/min
Pressure: 2000 psi
Temperature: Ambient
Detector: UV at 254nm, 0.5 AUFS

Components

1. Methyl p-hydroxybenzoic Acid Ester
2. Ethyl p-hydroxybenzoic Acid Ester
3. Propyl p-hydroxybenzoic Acid Ester
4. Isobutyl p-hydroxybenzoic Acid Ester
5. Butyl p-hydroxybenzoic Acid Ester



visit www.sge.com or contact our technical Customer Support Team on: techsupport@sge.com

SGE International Pty. Ltd.
email: support@sge.com

SGE Incorporated (USA)
email: usa@sge.com

SGE (France) Sarl
email: france@sge.com

SGE Deutschland GmbH
email: germany@sge.com

SGE Japan Inc.
email: sgejpn@itjit.ne.jp

SGE Australia Pty. Ltd.
email: sales@sge.com

SGE Europe Ltd. (UK)
email: uk@sge.com

SGE (Italia) Srl.
email: sge.italia@tin.it

SGE China Service Centre
email: sge@bj.col.com.cn

SGE India
email: sgeindia@bom4.vsnl.net.in