

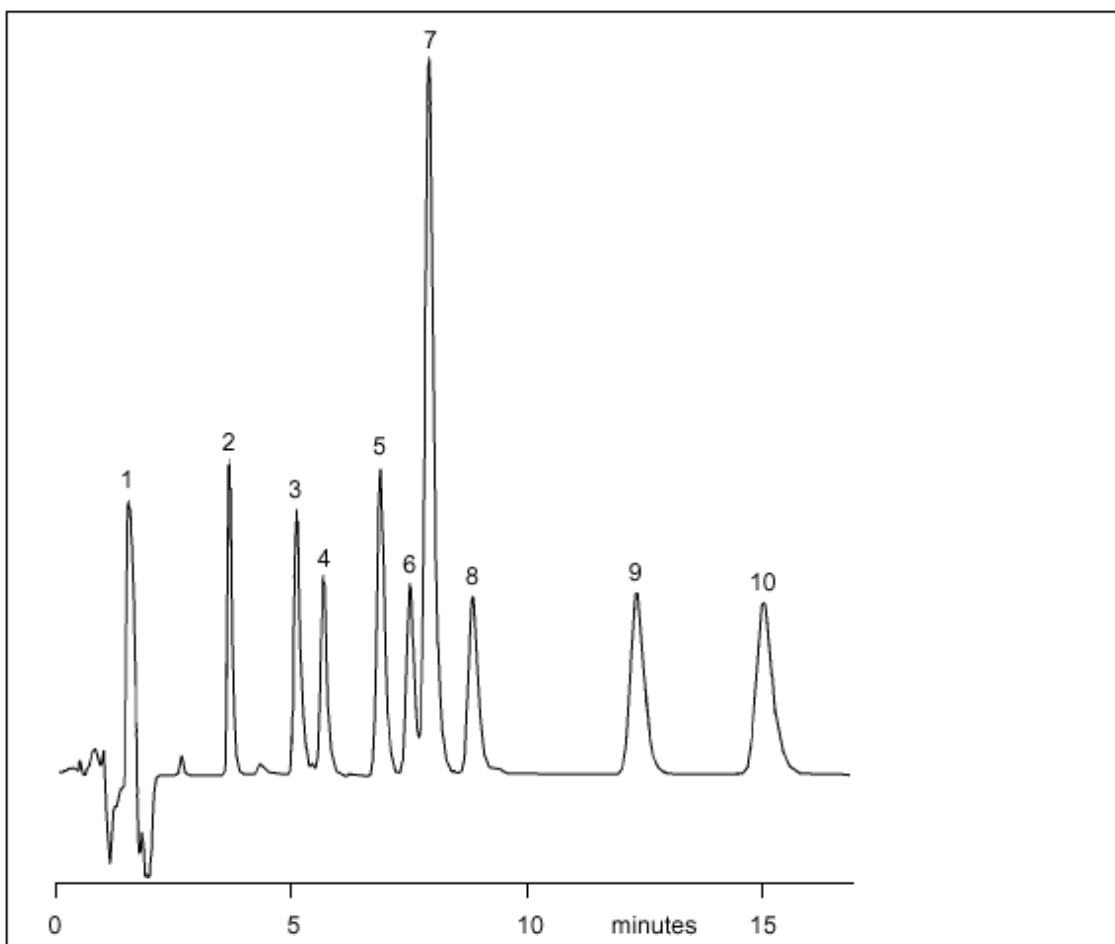
LC-ARO 31
Aromatics

Phenols on W5C18 RS

Part No.: 206605
Packing: Wakosil-II 5C18 RS
Column: 150mm x 4.6mm
Mobile Phase: 40% Acetonitrile,
60% Water
Flow: 1.0 mL/min
Pressure: 1000psi
Temperature: Ambient
Detector: UV at 254nm

Components

1. Methanol (solvent peak)
2. Phenol
3. m-Cresol
4. o-Cresol
5. 3,4-Xylenol
6. 3,5-Xylenol
7. p-Ethylphenol
8. 2,6-Xylenol
9. 2,3,5-Trimethylphenol
10. 2-Isopropylphenol



visit www.sge.com or contact our technical Customer Support Team on: techsupport@sge.com

SGE International Pty. Ltd.
email: support@sge.com

SGE Incorporated (USA)
email: usa@sge.com

SGE (France) Sarl
email: france@sge.com

SGE Deutschland GmbH
email: germany@sge.com

SGE Japan Inc.
email: sgejpn@itjit.ne.jp

SGE Australia Pty. Ltd.
email: sales@sge.com

SGE Europe Ltd. (UK)
email: uk@sge.com

SGE (Italia) Srl.
email: sge.italia@tin.it

SGE China Service Centre
email: sge@bj.col.com.cn

SGE India
email: sgeindia@bom4.vsnl.net.in