

# HPLC ANALYTICAL SOLUTIONS

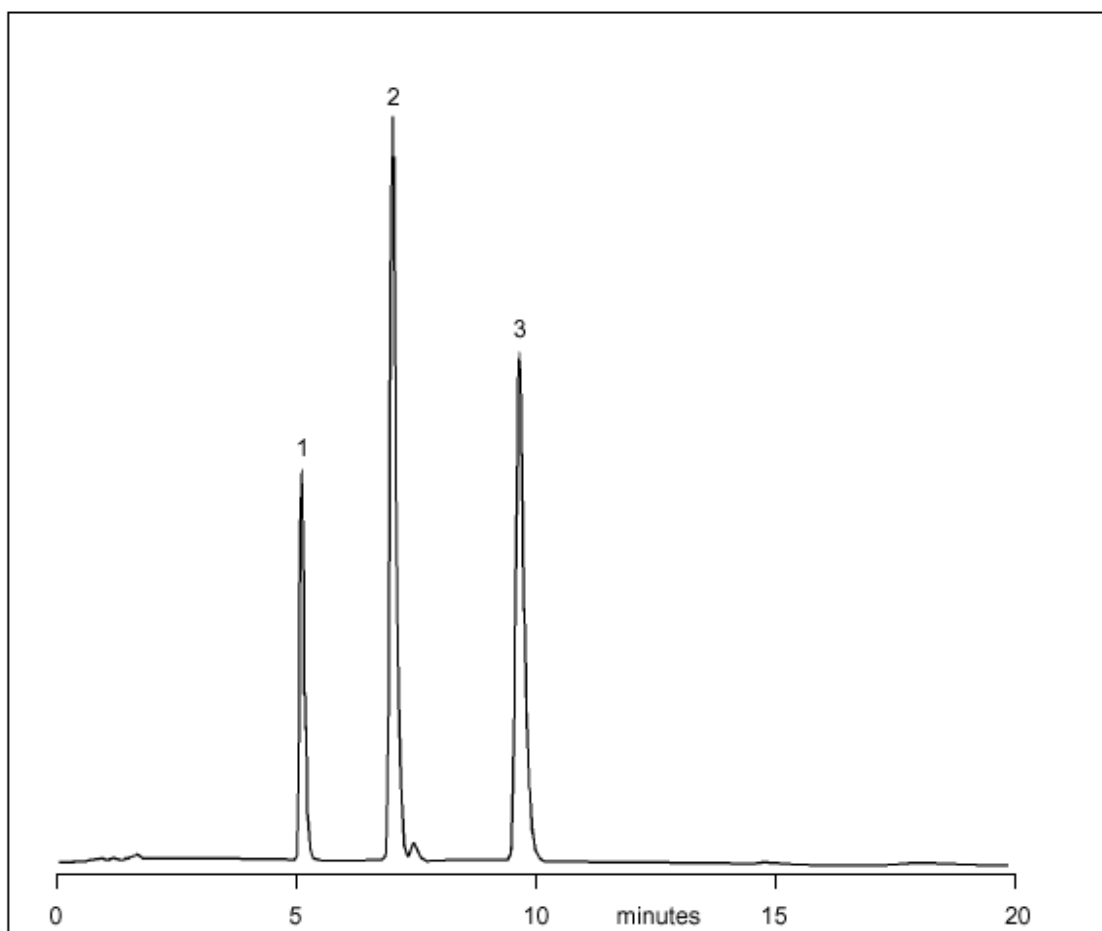


**LC-ARO 30**  
**Aromatics**

**Homologous Series on W5C18 RS**

**Part No.:** 206505  
**Packing:** Wakosil-II 5C18 RS  
**Column:** 250mm x 4.6mm  
**Mobile Phase:** 60% Acetonitrile,  
40% Water  
**Flow:** 1.5 mL/min  
**Pressure:** 2200psi  
**Temperature:** Ambient  
**Detector:** UV at 254nm

**Components**  
1. Benzene  
2. Toluene  
3. Ethyl Benzene



visit [www.sge.com](http://www.sge.com) or contact our technical Customer Support Team on: [techsupport@sge.com](mailto:techsupport@sge.com)

SGE International Pty. Ltd.  
email:support@sge.com

SGE Incorporated (USA)  
email:usa@sge.com

SGE (France) Sarl  
email:france@sge.com

SGE Deutschland GmbH  
email:germany@sge.com

SGE Japan Inc.  
email:sgejpn@itjit.ne.jp

SGE Australia Pty. Ltd.  
email:sales@sge.com

SGE Europe Ltd. (UK)  
email:uk@sge.com

SGE (Italia) Srl.  
email:sge.italia@tin.it

SGE China Service Centre  
email:sge@bj.col.com.cn

SGE India  
email:sgeindia@bom4.vsnl.net.in