

HPLC ANALYTICAL SOLUTIONS



LC-ARO 28

Aromatics

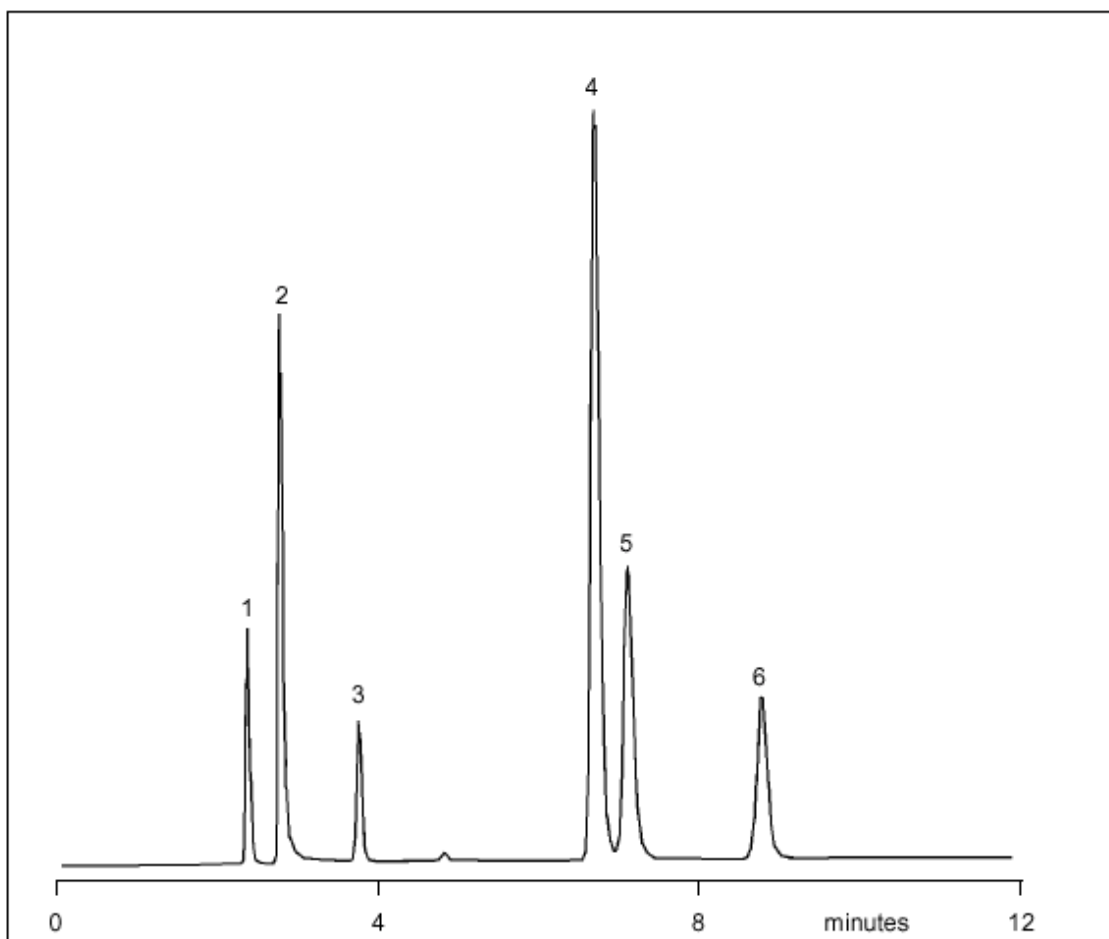
N,N-Dimethylaniline on W5C18 RS

Keywords: amine

Part No.: 206505
Packing: Wakosil-II 5C18 RS
Column: 250mm x 4.6mm
Mobile Phase: 35% (0.05M Sodium Phosphate Buffer pH 3.18), 65% Acetonitrile
Flow: 1.0 mL/min
Pressure: 1600psi
Temperature: Ambient
Detector: UV at 254nm

Components

1. Uracil
2. Pyridine
3. Phenol
4. N,N-Dimethylaniline
5. 4-Butylbenzoic Acid
6. Toluene



visit www.sge.com or contact our technical Customer Support Team on: techsupport@sge.com

SGE International Pty. Ltd.
email: support@sge.com

SGE Incorporated (USA)
email: usa@sge.com

SGE (France) Sarl
email: france@sge.com

SGE Deutschland GmbH
email: germany@sge.com

SGE Japan Inc.
email: sgejpn@itjit.ne.jp

SGE Australia Pty. Ltd.
email: sales@sge.com

SGE Europe Ltd. (UK)
email: uk@sge.com

SGE (Italia) Srl.
email: sge.italia@tin.it

SGE China Service Centre
email: sge@bj.col.com.cn

SGE India
email: sgeindia@bom4.vsnl.net.in