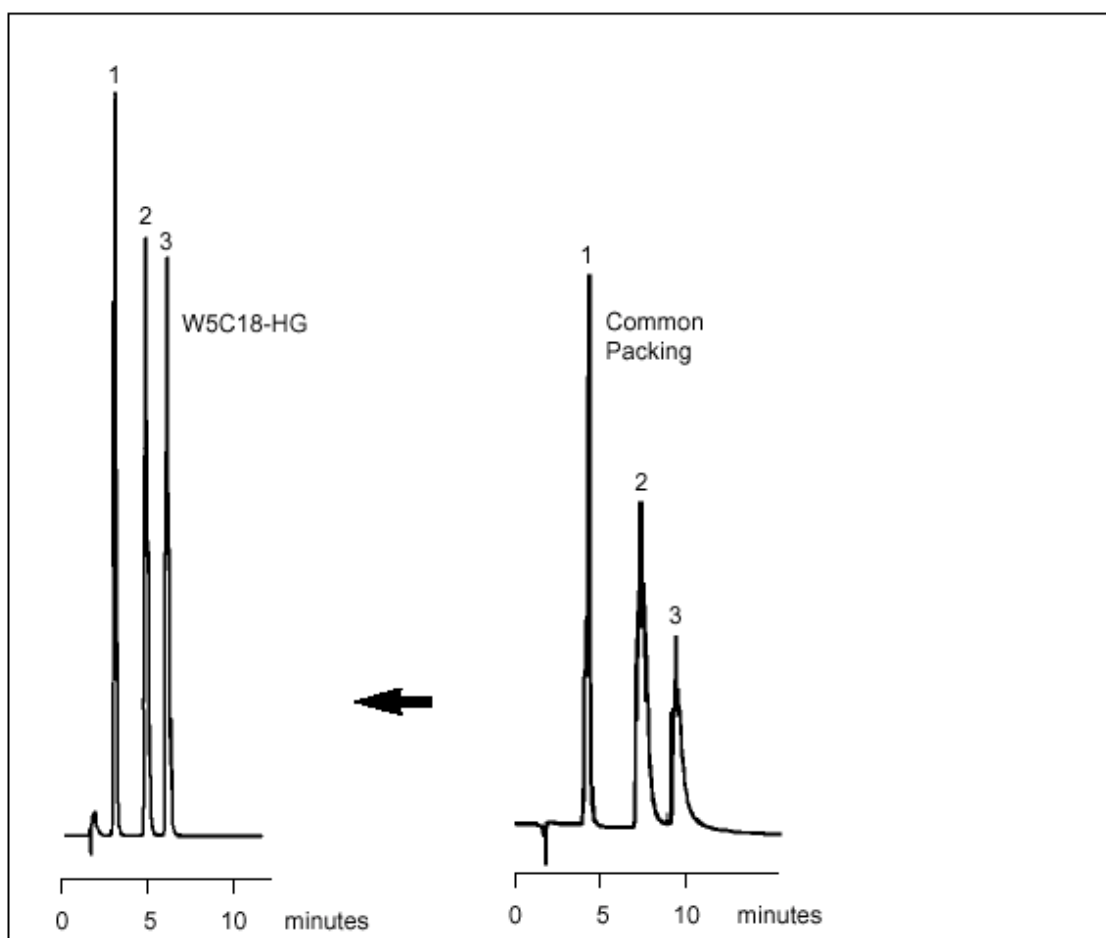


LC-ARO 26 Aromatics

Aniline Derivatives on W5C18 HG

Keywords: amine

Part No.:	2066051	Components
Packing:	Wakosil-II 5C18 HG	1. Aniline
Column:	150mm x 4.6mm	2. N-Methylaniline
Mobile Phase:	5% Methanol, 95% (20mM KH ₂ PO ₄ adjusted to pH 2.7 With H ₃ PO ₄)	3. N,N-Dimethylaniline
Flow:	1.0 mL/min	
Temperature:	30°C	
Detector:	UV at 254nm	



visit www.sge.com or contact our technical Customer Support Team on: techsupport@sge.com

SGE International Pty. Ltd.
email: support@sge.com

SGE Incorporated (USA)
email: usa@sge.com

SGE (France) Sarl
email: france@sge.com

SGE Deutschland GmbH
email: germany@sge.com

SGE Japan Inc.
email: sgejpn@itjit.ne.jp

SGE Australia Pty. Ltd.
email: sales@sge.com

SGE Europe Ltd. (UK)
email: uk@sge.com

SGE (Italia) Srl.
email: sge.italia@tin.it

SGE China Service Centre
email: sge@bj.col.com.cn

SGE India
email: sgeindia@bom4.vsnl.net.in