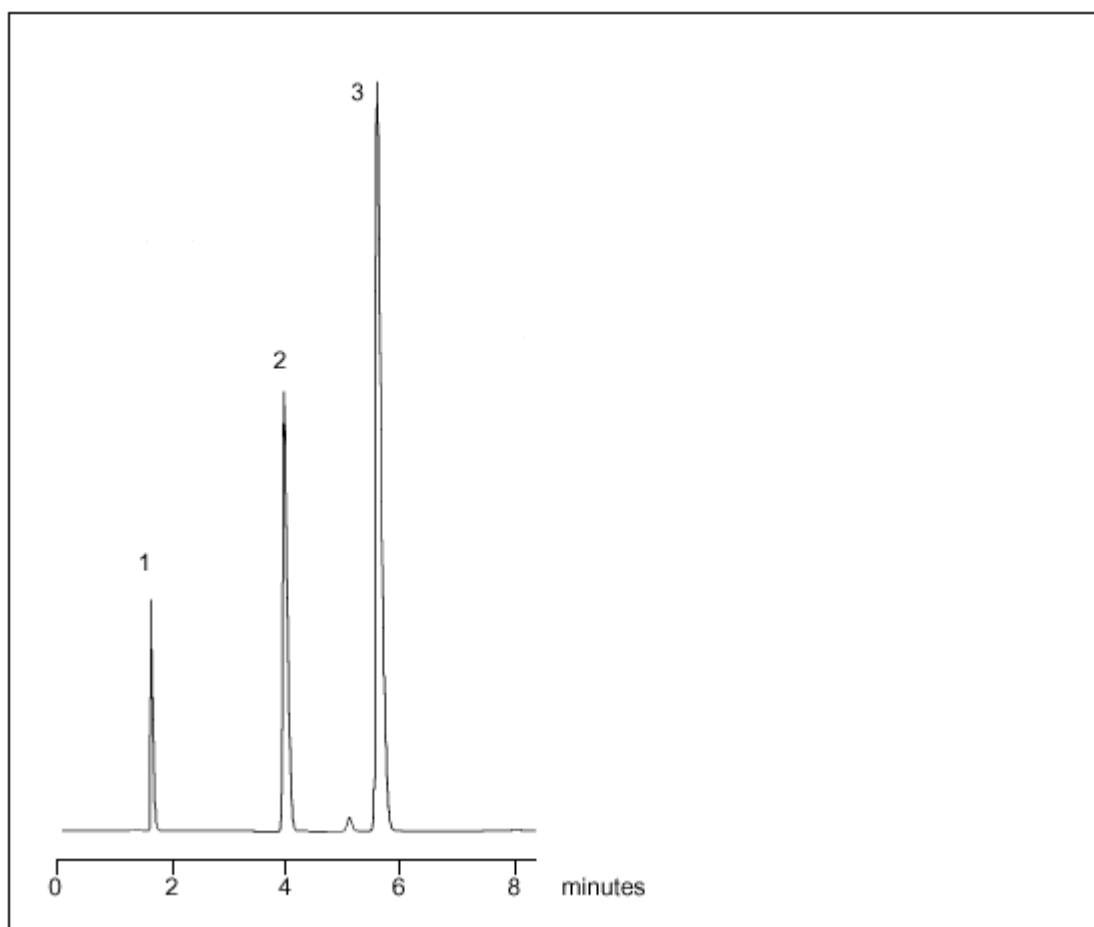


LC-ARO 22
Aromatics

Naphthalene on W5C8 RS at 35°C

Part No.:	206610	Components
Packing:	Wakosil-II 5C8 RS	1. Uracil
Column:	150mm x 4.6mm	2. Benzene
Mobile Phase:	60% Acetonitrile, 40% Water	3. Naphthalene
Flow:	1.0 mL/min	
Temperature:	35°C	
Detector:	UV at 254nm	



visit www.sge.com or contact our technical Customer Support Team on: techsupport@sge.com

SGE International Pty. Ltd.
email: support@sge.com

SGE Incorporated (USA)
email: usa@sge.com

SGE (France) Sarl
email: france@sge.com

SGE Deutschland GmbH
email: germany@sge.com

SGE Japan Inc.
email: sgejpn@itjit.ne.jp

SGE Australia Pty. Ltd.
email: sales@sge.com

SGE Europe Ltd. (UK)
email: uk@sge.com

SGE (Italia) Srl.
email: sge.italia@tin.it

SGE China Service Centre
email: sge@bj.col.com.cn

SGE India
email: sgeindia@bom4.vsnl.net.in