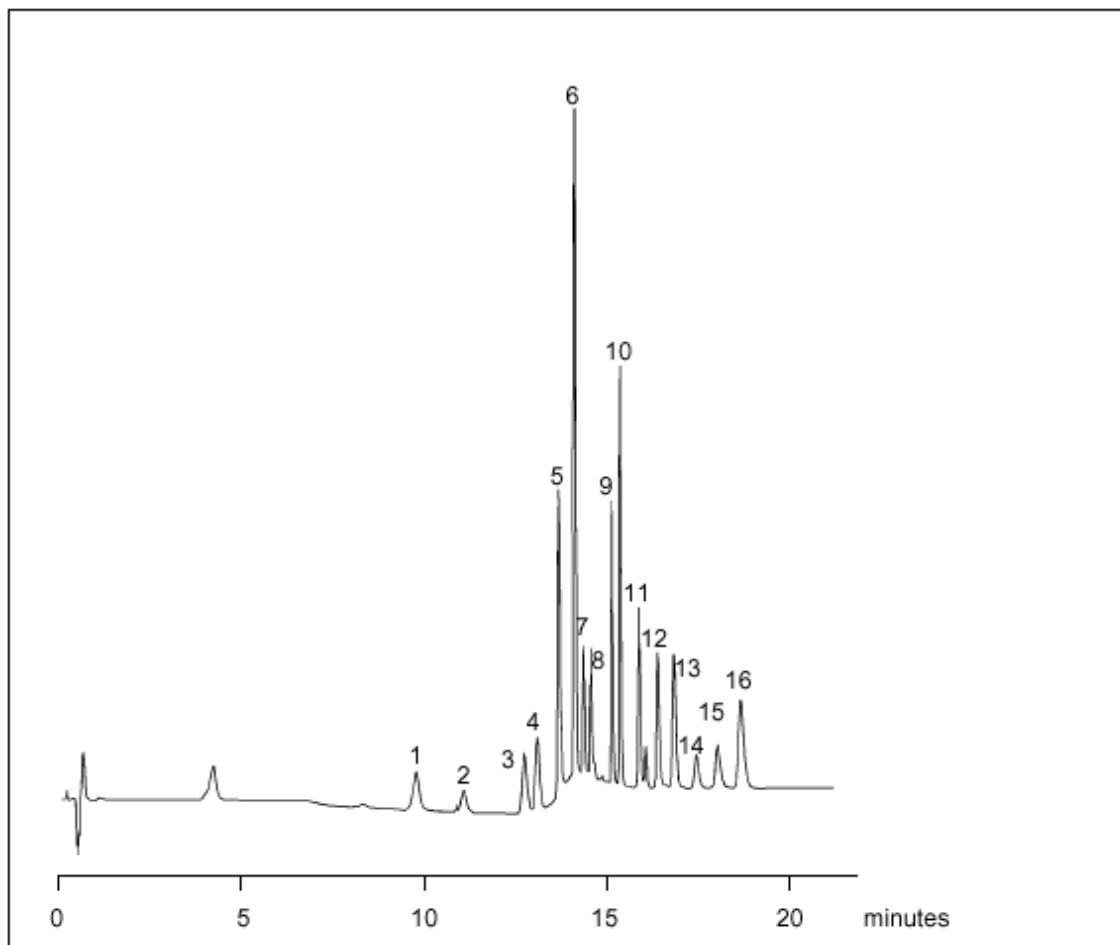


LC-ARO 21 Aromatics

16 PAH Components on W5C18 AR

Keywords: PAH, Environmental

Part No.:	2066050	Components
Packing:	Wakosil-II 5C18 AR	1. Naphthalene
Column:	150mm x 4.6mm	13. Benzo(a)pyrene
Mobile Phase A:	40% Acetonitrile, 60% Water	2. Acenaphthylene
Mobile Phase B:	100% Acetonitrile	14. Dibenzo(ah)anthracene
Gradient:	0-5 min 100% A 5-12 min 100%-60% A 12-13 min 60%-0% A	3. Acenaphthene
Flow:	2.0 mL/min	15. Benzo(ghi)perylene
Pressure:	3500psi	16. Indeno(123cd)pyrene
Temperature:	Ambient	4. Fluorene
Detector:	UV at 254nm	5. Phenanthrene
		6. Anthracene
		7. Fluoranthene
		8. Pyrene
		9. Benzo(a)anthracene
		10. Chrysene
		11. Benzo(b)fluoranthene
		12. Benzo(k)fluoranthene



visit www.sge.com or contact our technical Customer Support Team on: techsupport@sge.com

SGE International Pty. Ltd.
email: support@sge.com

SGE Incorporated (USA)
email: usa@sge.com

SGE (France) Sarl
email: france@sge.com

SGE Deutschland GmbH
email: germany@sge.com

SGE Japan Inc.
email: sgejpn@itjit.ne.jp

SGE Australia Pty. Ltd.
email: sales@sge.com

SGE Europe Ltd. (UK)
email: uk@sge.com

SGE (Italia) Srl.
email: sge.italia@tin.it

SGE China Service Centre
email: sge@bj.col.com.cn

SGE India
email: sgeindia@bom4.vsnl.net.in