

# HPLC ANALYTICAL SOLUTIONS



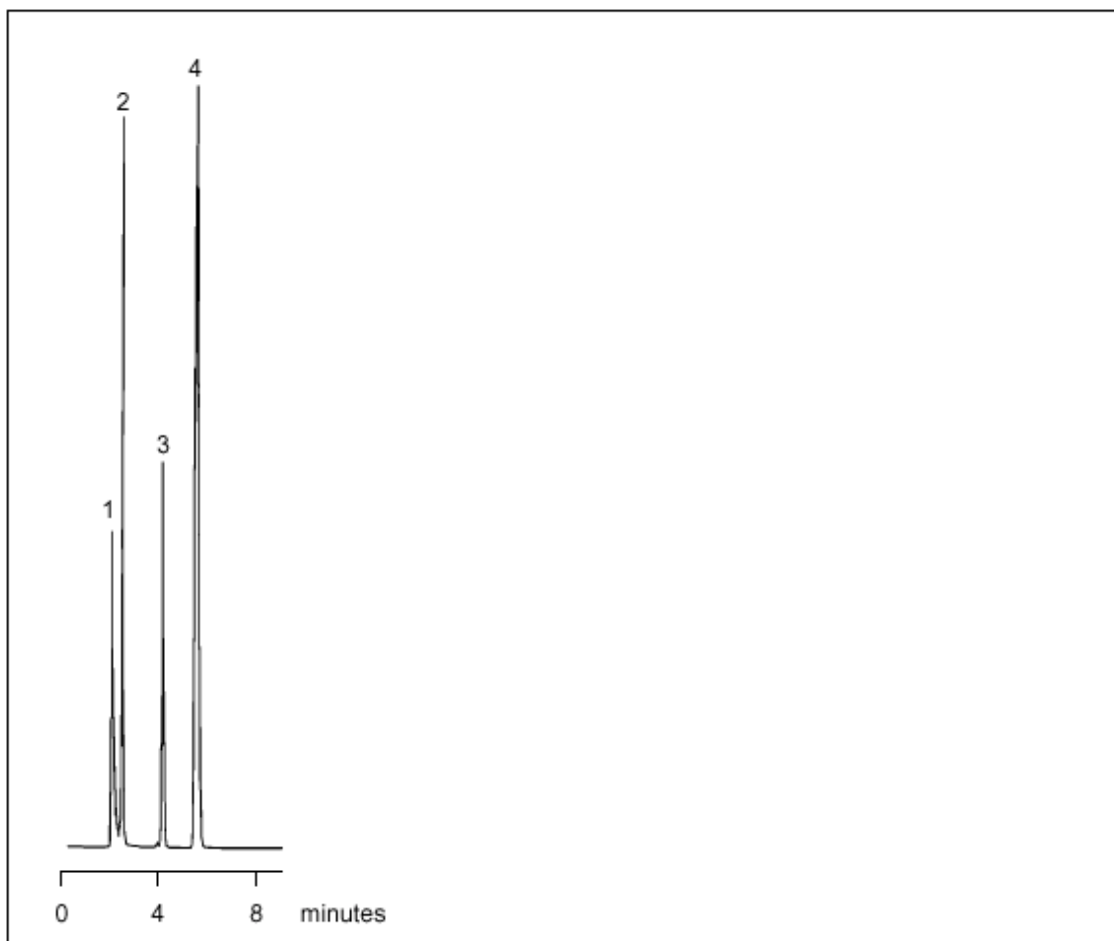
**LC-ARO 01**  
**Aromatics**

**3-Methylindole on W5C18 AR**

**Part No.:** 2066050  
**Packing:** Wakosil-II 5C18 AR  
**Column:** 150mm x 4.6mm  
**Mobile Phase:** 50% Acetonitrile,  
50% Water (v/v)  
**Flow:** 1.0 mL/min  
**Temperature:** Ambient  
**Detector:** UV at 254nm

## Components

1. Pyridine
2. Phenol
3. Methylbenzoate
4. 3-Methylindole



visit [www.sge.com](http://www.sge.com) or contact our technical Customer Support Team on: [techsupport@sge.com](mailto:techsupport@sge.com)

SGE International Pty. Ltd.  
email: support@sge.com

SGE Incorporated (USA)  
email: usa@sge.com

SGE (France) Sarl  
email: france@sge.com

SGE Deutschland GmbH  
email: germany@sge.com

SGE Japan Inc.  
email: sgejpn@itjit.ne.jp

SGE Australia Pty. Ltd.  
email: sales@sge.com

SGE Europe Ltd. (UK)  
email: uk@sge.com

SGE (Italia) Srl.  
email: sge.italia@tin.it

SGE China Service Centre  
email: sge@bj.col.com.cn

SGE India  
email: sgeindia@bom4.vsnl.net.in