

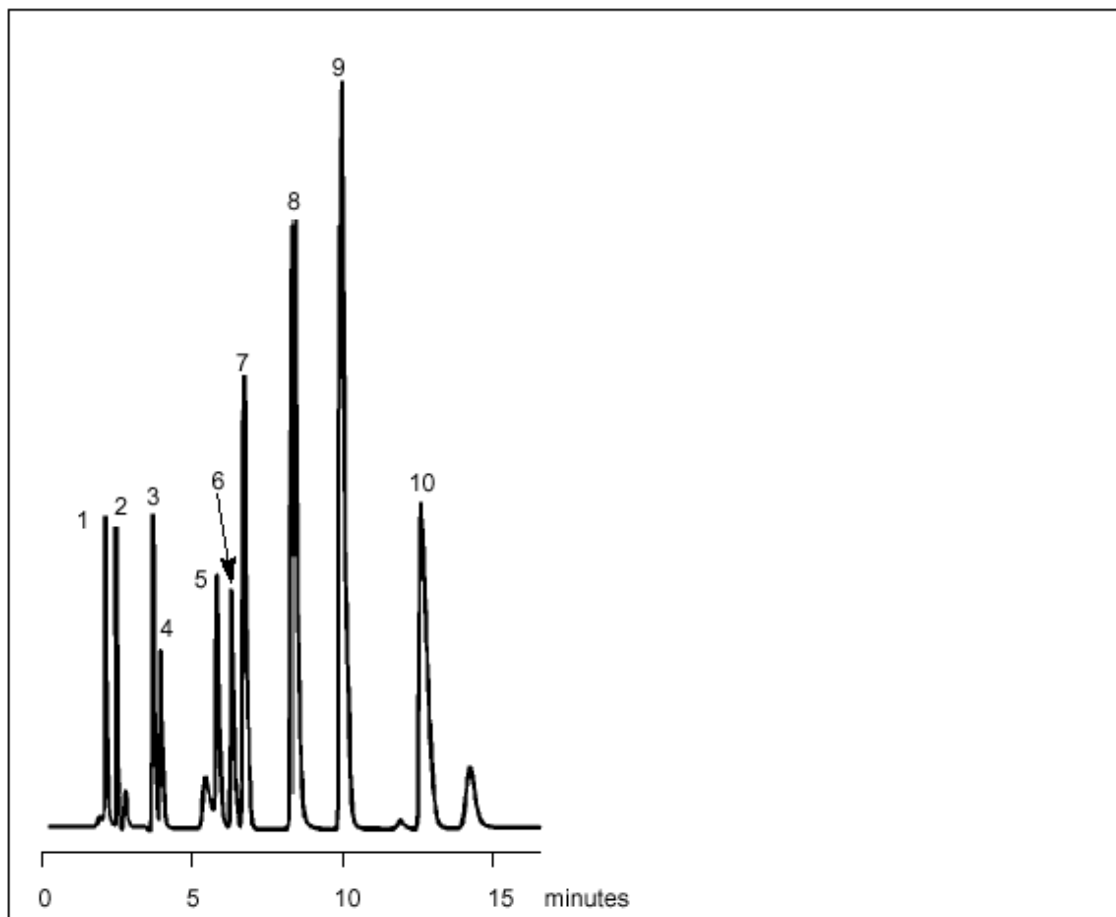
LC-ACI 03
Acids

10 Carboxylic Acids on W5C18 RS

Part No.: 206605
Packing: Wakosil-II 5C18 RS
Column: 150mm x 4.6mm
Mobile Phase: 20mM NaH₂PO₄
pH 2.5
Flow: 1.0 mL/min
Temperature: 30°C
Detector: UV at 210nm

Components

1. Oxalic Acid
2. Formic Acid
3. Lactic Acid
4. Acetic Acid
5. Citric Acid
6. Fumaric Acid
7. Succinic Acid
8. Acrylic Acid
9. Propionic Acid
10. Levulinic Acid



visit www.sge.com or contact our technical Customer Support Team on: techsupport@sge.com

SGE International Pty. Ltd.
email: support@sge.com

SGE Incorporated (USA)
email: usa@sge.com

SGE (France) Sarl
email: france@sge.com

SGE Deutschland GmbH
email: germany@sge.com

SGE Japan Inc.
email: sgejpn@itjit.ne.jp

SGE Australia Pty. Ltd.
email: sales@sge.com

SGE Europe Ltd. (UK)
email: uk@sge.com

SGE (Italia) Srl.
email: sge.italia@tin.it

SGE China Service Centre
email: sge@bj.col.com.cn

SGE India
email: sgeindia@bom4.vsnl.net.in