

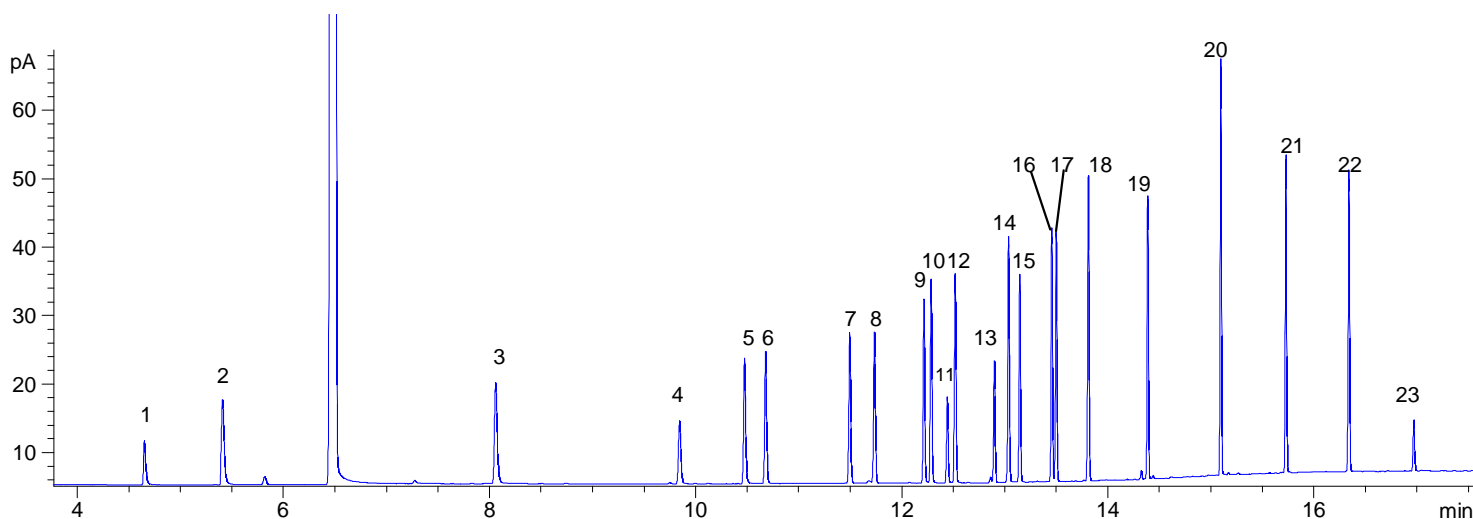
SOL 33 SOLVENTS

Analysis of Ketones on Thick Film BPX5

Phase: BPX5, 1.0 μ m film
Sample: 300 ppm in dichloromethane
Column: 60m x 0.25 mm ID
Initial Temp: 40°C, 5 min.
Rate 1: 10°C/min to 80°C,
Rate 2: 30°C/min to 260°C
Final Temp: 260°C, 4 min.
Detector Type: FID
Detector Temp.: 360°C
Carrier Gas: He, 27.6 psi
Carrier Gas Flow: 1.9 mL/min.
Constant Flow: On
Average Linear Velocity: 35 cm/sec at 40°C
Injection Mode: Split
Split Ratio: 100:1
Injection Volume: 0.4 μ L
Injection Temperature: 250°C
Autosampler: No
Liner Type: 4 mm ID Single Taper Liner
Liner Part Number: 092017
Column Part Number: 054123

Components

1. Ethanol
2. Acetone
3. 2-Butanone
4. 3-Methyl-2-butanone
5. 2-Pentanone
6. 3-pentanone
7. 4-Methyl-2-pentanone
8. 3-Methyl-2-pentanone
9. 3-Hexanone
10. 2-Hexanone
11. Mesityl oxide
12. Cyclopentanone
13. 2-Methyl-3-hexanone
14. 4-Methyl-2-hexanone
15. 5-Methyl-2-hexanone
16. 3-Heptanone
17. 2-Heptanone
18. Cyclohexanone
19. 2-Octanone
20. 2-Nonanone
21. 2-Decanone
22. 2-Undecanone
23. 2-Dodecanone



visit www.sge.com or contact our technical Customer Support Team on: techsupport@sge.com

SGE International Pty. Ltd.
email: support@sge.com

SGE, Incorporated (USA)
email: usa@sge.com

SGE (Italia) Srl.
email: sge.italia@tin.it

SGE China Service Centre
email: sge@bj.col.com.cn

SGE India
email: sgeindia@vsnl.com

SGE Europe Ltd. (UK)
email: uk@sge.com

SGE (France) Sarl
email: france@sge.com

SGE Deutschland GmbH
email: germany@sge.com

SGE Japan Inc.
email: japan@sge.com