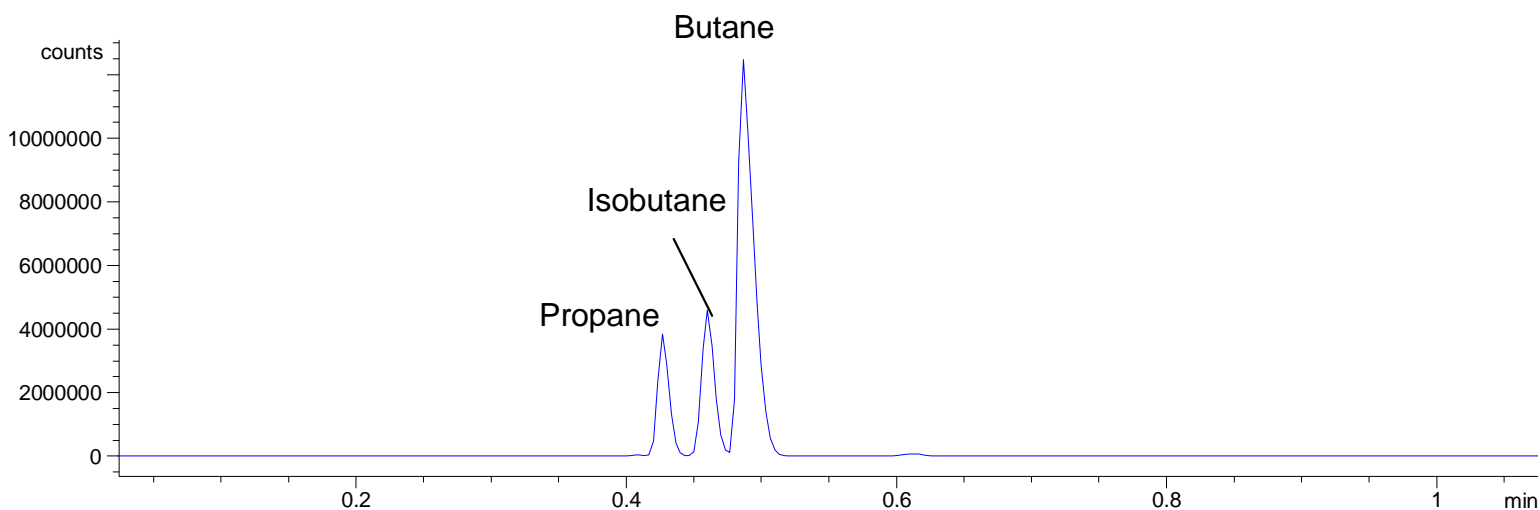


Analysis of Cigarette Lighter Fuel on a 6 Metre BPX5 Column

Phase:	BPX5, 1.0μm film	Components
Sample:	butane mixture from lighter	
Column:	6m x 0.32 mm ID	Propane
Isothermal Temp:	30°C, 5 min.	<i>Isobutane</i>
Detector Type:	FID	Butane
Detector Temp.:	270°C	
Carrier Gas:	He, 1.94 psi	
Carrier Gas Flow:	1.7 mL/min.	
Constant Flow:	On	
Average Linear Velocity:	35 cm/sec at 30°C	
Injection Mode:	Split	
Split Ratio:	100:1	
Injection Volume:	10 μ L	
Injection Temperature:	250°C	
Autosampler:	No	
Liner Type:	4 mm ID Single Taper Liner	
Liner Part Number:	092017	
Column Part Number:	0541261	



visit www.sge.com or contact our technical Customer Support Team on: techsupport@sge.com

SGE International Pty. Ltd.
email: support@sge.com

SGE, Incorporated (USA)
email: usa@sge.com

SGE (Italia) Srl.
email: sge.italia@tin.it

SGE China Service Centre
email: sge@bj.col.com.cn

SGE India
email: sgeindia@vsnl.com

SGE Europe Ltd. (UK)
email: uk@sge.com

SGE (France) Sarl
email: france@sge.com

SGE Deutschland GmbH
email: germany@sge.com

SGE Japan Inc.
email: japan@sge.com